

**INSTRUMENT APPROACH
CHART (IAC)**

CRUZ / Comandante Ariston Pessoa (SBJE)

AD ELEV: 89'

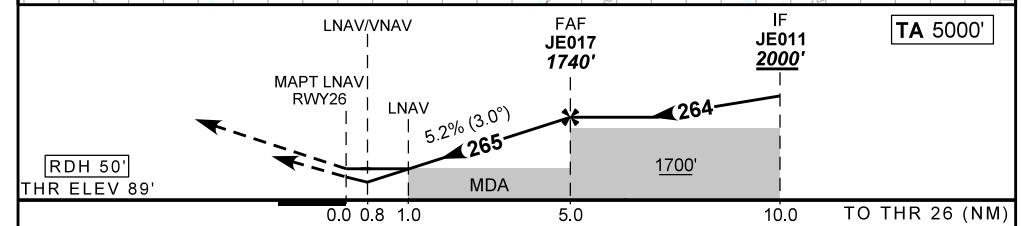
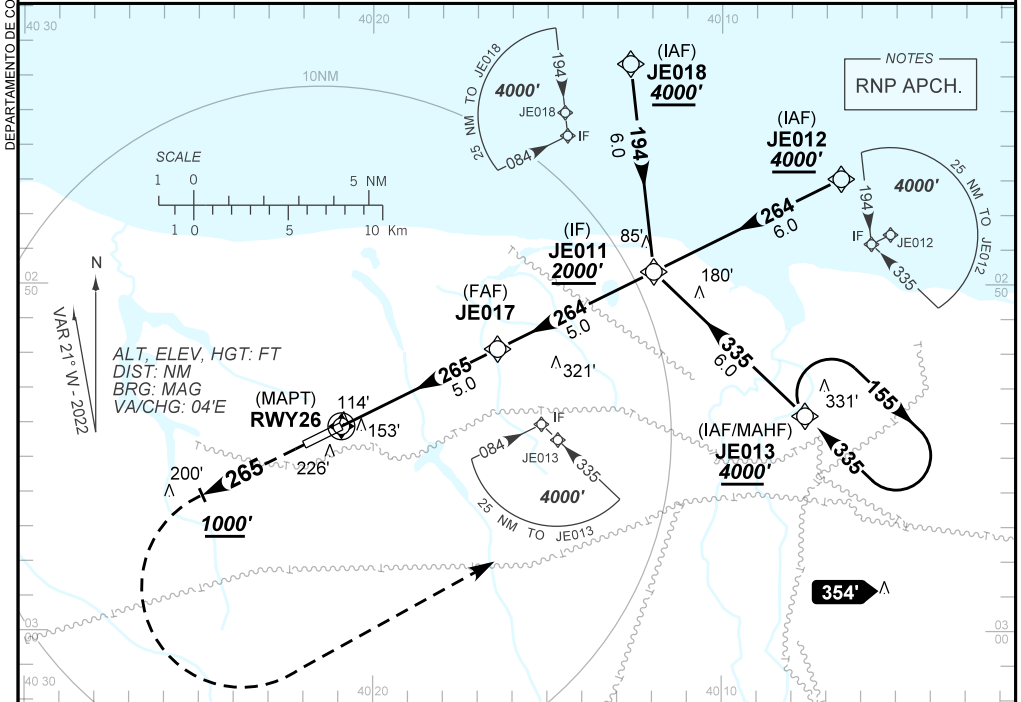
RNP RWY 26

ATIS NIL	APP NIL	AFIS JERICOACOARA 131.05	GNDC NIL
-------------	------------	-----------------------------	-------------

TEMP LNAV/VNAV MIN 10°C / MAX 50°C	FINAL CRS 265°	FAF: 1740'	LNAV/VNAV DA / (OCH): 386' / (297')	LNAV MDA / (OCH): 440' / (360')
--	--------------------------	----------------------	---	---

APCH Perdida: Subir para **4000'**. Manter proa **265** até **1000'**. Após, curvar à ESQUERDA direto JE013 para espera.

Missed APCH: Climb to **4000'**. Maintain heading **265** until **1000'**. After turn LEFT direct JE013 for holding.



RWY26	1.0	2.0	3.0	4.0	JE017
ALT	440	776	1094	1413	1740
(HGT)	360	687	1005	1324	1651

Ground Speed (KT)	090	110	130	150	170	190
FPM	500	600	700	800	900	NA
FAF-MAPT	NIL					

STRAIGHT-IN	CAT	A	B	C	D	E	
	DA / (OCH)	386' / (297')					NA
LNAV/VNAV	ALS/NO ALS/ RVR ALS (m)	NIL / 1400 / NIL					
	MDA / (OCH)	440' / (360')					
LNAV	ALS/NO ALS/ RVR ALS (m)	NIL / 1600 / NIL					
	MDA / (OCH)	NA					
CIRCLING	MDA / (OCH)	NA					
	VIS (m)	NA					