

**INSTRUMENT APPROACH
CHART (IAC)**

MANAUS / Ponta Pelada, MIL (SBMN)

AD ELEV: 257'

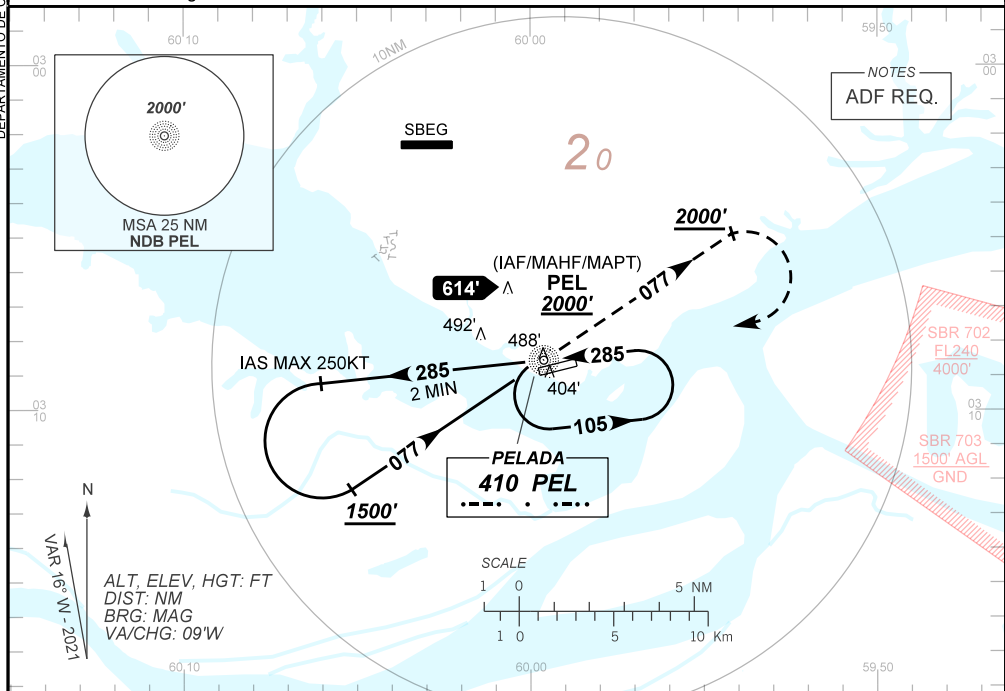
NDB RWY 09

DEPARTAMENTO DE CONTROLE DO ESPAÇO AEREO

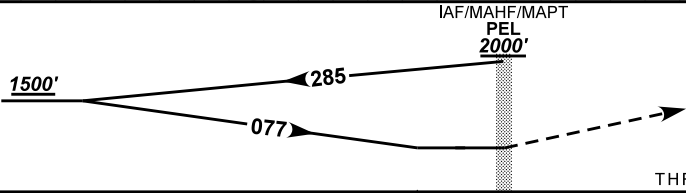
ATIS NIL	APP MANAUS 119.25 119.70 120.40	TWR PONTA PELADA 118.60	GNDC NIL
--------------------	---	-----------------------------------	--------------------

NDB PEL 410 KHz	FINAL CRS 077°	N/A	N/A	NDB MDA / (OCH): 780' / (540')
---------------------------	--------------------------	-----	-----	--

APCH Perdida: Subir para **2000'**. Manter o QDR **077** do NDB PEL até **2000'**. Após, curvar à DIREITA direto NDB PEL para espera.
 Missed APCH: Climb to **2000'**. Maintain **077** QDR PEL NDB until **2000'**. After, turn RIGHT direct to PEL NDB for holding.



TA 4000'



THR ELEV 248'

NIL	RWY09	Ground Speed (KT)	090	110	130	150	170	190
NIL	ALT	FPM	650					
NIL	(HGT)	FAF-MAPT	NA					

STRAIGHT-IN	CAT	A	B	C	D	E
NDB	MDA / (OCH)	780' / (540')				
	ALS/NO ALS/ RVR ALS (m)	NIL / 1600 / NIL		NIL / 2400 / NIL		
CIRCLING	MDA / (OCH)	NA				
	VIS (m)	NA				

CHANGES: LAYOUT, MINM OPR, PROC, THR ELEV, VAR.