

**INSTRUMENT APPROACH
CHART (IAC)**

SÃO GONÇALO DO AMARANTE / Gov. Aluizio Alves, INTL (SBSG)

AD ELEV: 273'

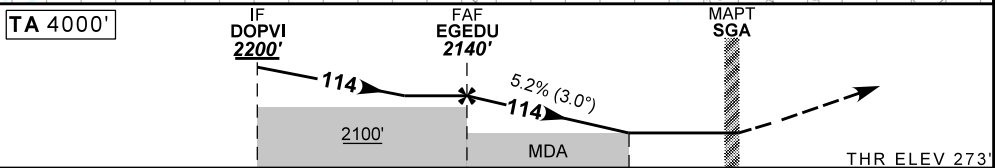
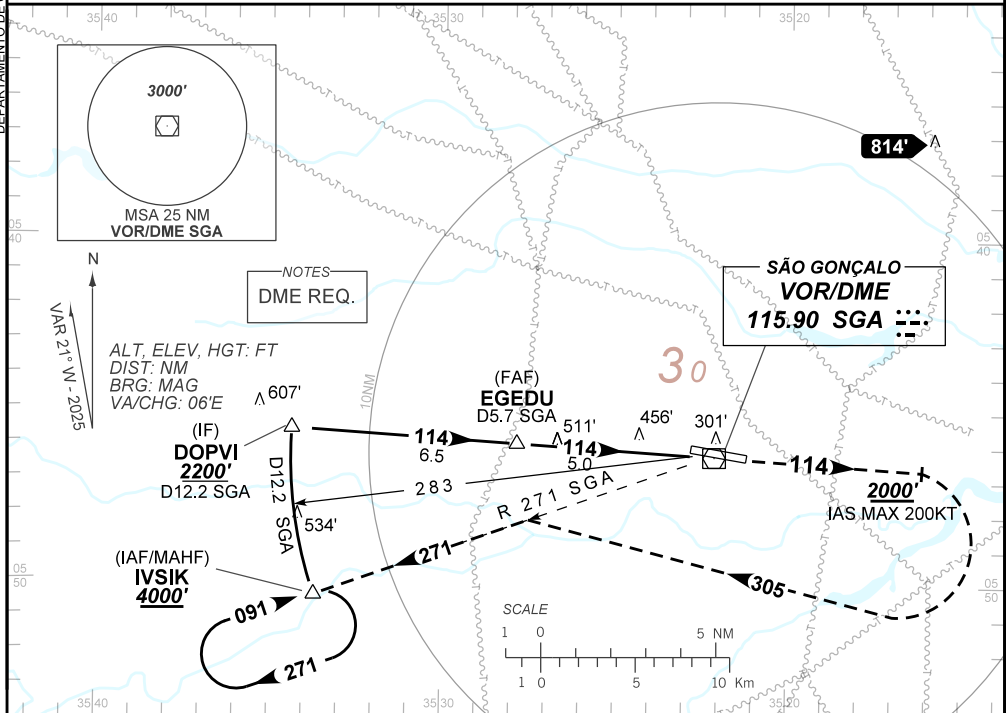
VOR A RWY 12

ATIS 127.60	APP NATAL 119.30 119.65 120.65 129.80		TWR SÃO GONÇALO 118.20 118.85	GND C SÃO GONÇALO 121.70
VOR/DME SGA 115.90 MHz	FINAL CRS 114°	FAF: 2140'	N/A	N/A

APCH Perdida: 1) Subir para **4000'**. Manter RDL **114°** do VOR SGA até **2000'**. Após, curvar à DIREITA proa **305°** para interceptar RDL **271°** do VOR SGA até IVSIK para espera. 2) Proibido rebloqueio do VOR SGA.

Missed APCH: 1) Climb to **4000'**. Maintain **114°** RDL SGA VOR until **2000'**. After, turn RIGHT heading **305°** to intercept **271°** RDL SGA VOR until IVSIK for holding. 2) Overflight of SGA VOR is forbidden.

DEPARTAMENTO DE CONTROLE DO ESPAÇO AÉREO



TO THR 12 (NM)	11.5	5.0	1.5	0.0
TO SGA (DME)	12.2	5.7	2.2	0.7

	EGEDU	5.0	4.0	3.0	2.2	MAPT	Ground Speed (KT)	90	110	130	150	170	190
	2140	1915	1597	1278	1010	ALT	FPM	500	600	700	800	900	NA
	1867	1642	1324	1005	740	(HGT)	FAF-MAPT	NA					

STRAIGHT-IN	CAT	A	B	C	D	E
	MDA / (OCH)	NA				
VOR	ALS/NO ALS/ RVR ALS (m)	NA				
CIRCLING	MDA / (OCH)	770' / (500')	910' / (640')	1010' / (740')	NA	
	VIS (m)	1600	2800	3600		