

**INSTRUMENT APPROACH  
CHART (IAC)**

**SÃO PAULO / Guarulhos - Gov. André Franco Montoro, INTL (SBGR)**

**AD ELEV: 2461'**

**ILS W or LOC W RWY 27R**

D-ATIS <b>127.75</b>	APP SÃO PAULO <b>129.75 119.15 134.90 129.00 123.25 120.85 120.85 122.75</b>	TWR GUARULHOS <b>118.40 132.75 135.20</b>	GNDC GUARULHOS <b>121.70 126.90</b>
-------------------------	---	--	--

LOC IGS <b>111.90</b>	FINAL CRS <b>275°</b>	FAF <b>4090'</b>	CAT I DA / (OCH): <b>REFER TO MNM</b>	LOC ONLY MDA / (OCH): <b>3050' / (610')</b>
--------------------------	--------------------------	---------------------	--	--

Aproximação Perdida: Subir para **6000'**. Manter rumo **275°** até cruzar **4500'**. Após, curvar à direita RDL **095°** STN para espera em UTKUG.

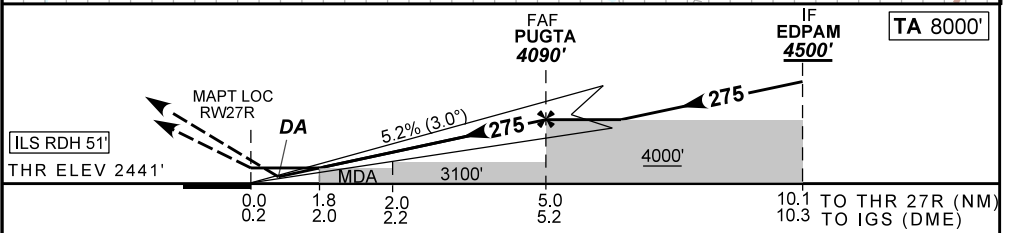
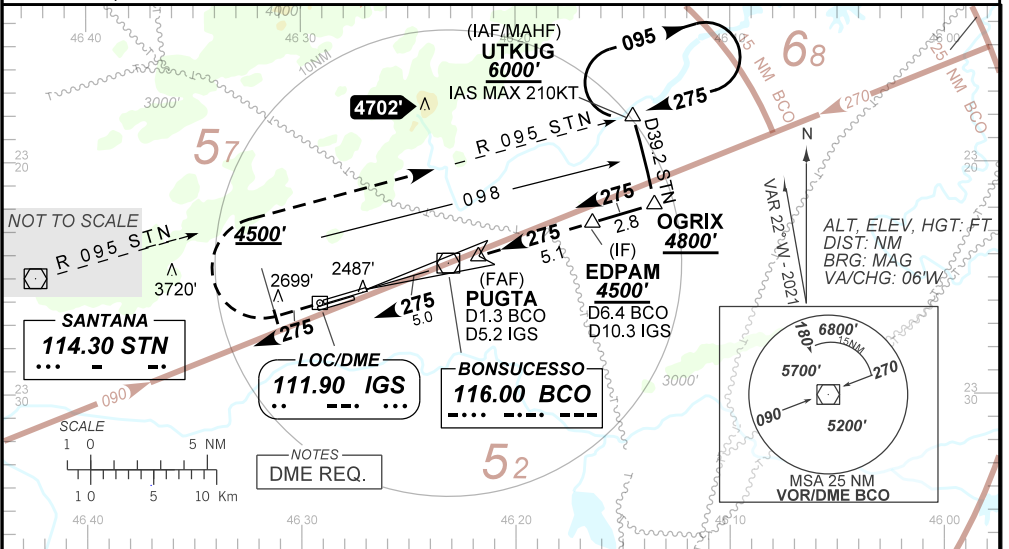
Missed Approach: Climb to **6000'**. Maintain course **275°** until passing **4500'**. Then, turn right **095°** STN RDL until UTKUG for holding.

RMK: 1) (\*) VIS RVR ALS 550m para aproximação utilizando Diretor de Voo, Piloto Automático ou Head-Up Display (HUD).

1) (\*) VIS RVR ALS 550m for approach using a Flight Director, Autopilot, or Head-Up Display (HUD).

ARREMETIDA VISUAL RWY 27L: Subir para **6000'**. Manter proa **275°** até **3400'**. Após, curvar à ESQUERDA proa **105°** e aguardar instruções ATC.

VISUAL GO AROUND RWY 27L: Climb to **6000'**. Maintain heading **275°** until **3400'**. Then, turn LEFT heading **105°** and expect ATC instructions.



RWY27R	0.5	2.0	3.0	4.0	PUGTA	KT	090	110	130	150	170	190
ALT (HGT)	2641	3128	3447	3765	4090	FPM	500	600	700	800	900	1000
						FAF-MAPT	NA					

STRAIGHT-IN	CAT	A	B	C	D	E
CAT I	DA / (OCH)	2641 / (200)				2666 / (225)
	ALS/NO ALS/ RVR ALS (m)	800 / 1200 / 700 (*)				
LOC	MDA / (OCH)	3050 / (610)				
	ALS/NO ALS/RVR ALS (m)	800 / 1600 / NIL			2100 / 2800 / NIL	
CIRCLING	MDA / (OCH)	NA				
	VIS (m)					

AIRAC AMDT 2105A3 20 MAY 21

SBGR\_IAC\_05C 1/1  
IAC ILS W or LOC W RWY 27R

DEPARTAMENTO DE CONTROLE DO ESPAÇO AÉREO

CHANGES: NEW CHART