

**INSTRUMENT APPROACH  
CHART (IAC)**

**CURITIBA / Bacacheri (SBBI)**

**AD ELEV: 3059'**

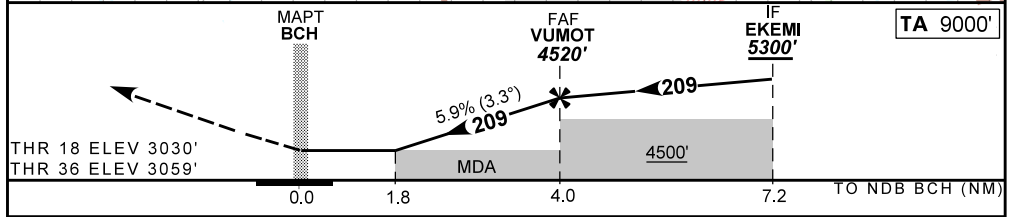
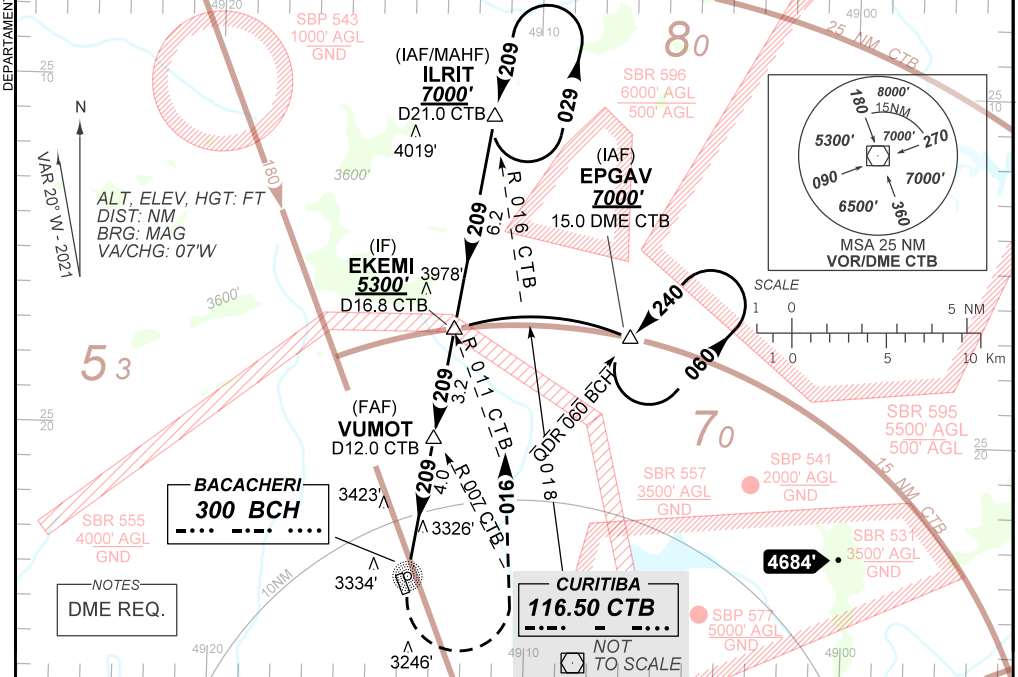
**NDB B RWY 18/36**

<b>ATIS</b> 132.325	<b>APP CURITIBA</b> 119.95 119.70 120.65 120.95 129.55 133.15			<b>TWR BACACHERI</b> 118.90	<b>GNDC BACACHERI</b> 121.80
<b>NDB BCH</b> 300 KHz	<b>FINAL CRS</b> 209°	<b>FAF</b> 4520'	<b>N/A</b>	<b>N/A</b>	

APCH Perdida: Subir para **7000'** curvando à ESQUERDA, para interceptar a RDL **0716** VOR CTB até ILRIT para espera.  
Missed APCH: Climbing **LEFT** turn to **7000'** to intercept **0716** RDL CTB VOR to ILRIT for holding.

RMK: 1) Proibido circular setor W (oeste) do AD entre os AZM 191 e 333. 2) Procedimento para circular RWY 18: após bloqueio do NDB BCH, curvar à esquerda, circular pelo setor E (leste).

1) Prohibited to circle W sector (west) from AD between AZM 191 and 333. 2) Procedure to circle RWY 18: after BCH NDB overheading, turn left, circling by E sector (east).



MAPT	1.8	2.0	3.0	VUMOT						
ALT	3720	3810	4160	4520						
(HGT)	670	751	1101	1461						
Ground Speed (KT)	090	110	130	150	170	190				
FPM	550	650	800	900	NA					
FAF-MAPT	NA									

STRAIGHT-IN	CAT	A	B	C	D	E
	MDA / (OCH)					
NDB	ALS/NO ALS/ RVR ALS (m)	NA				
CIRCLING	MDA / (OCH)	3650' / (600')	3720' / (670')			
	VIS (m)	1600	1600			

DEPARTAMENTO DE CONTROLE DO ESPAÇO AÉREO

CHANGES: F. LAYOUT. PROC. VAR.