

**INSTRUMENT APPROACH  
CHART (IAC)**

**RIO DE JANEIRO / Santos Dumont (SBRJ)**

**AD ELEV: 10'**

**RNP T RWY 02R (AR)**

DEPARTAMENTO DE CONTROLE DO ESPAÇO AÉREO

D-ATIS <b>132.65</b>	APP RIO <b>133.30 124.95 134.95 126.20 129.80 128.90 119.35 125.95 134.40 121.25</b>	TWR RIO <b>118.70</b>	GNDC RIO <b>121.70</b>
-------------------------	---	--------------------------	---------------------------

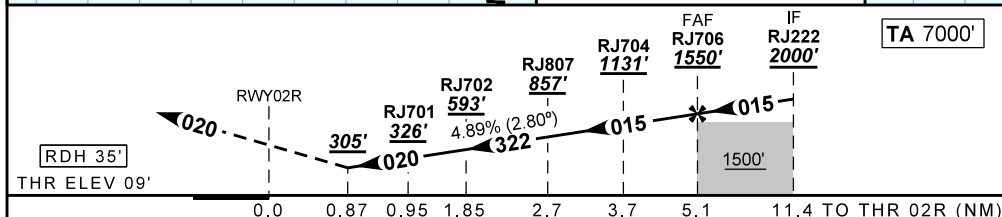
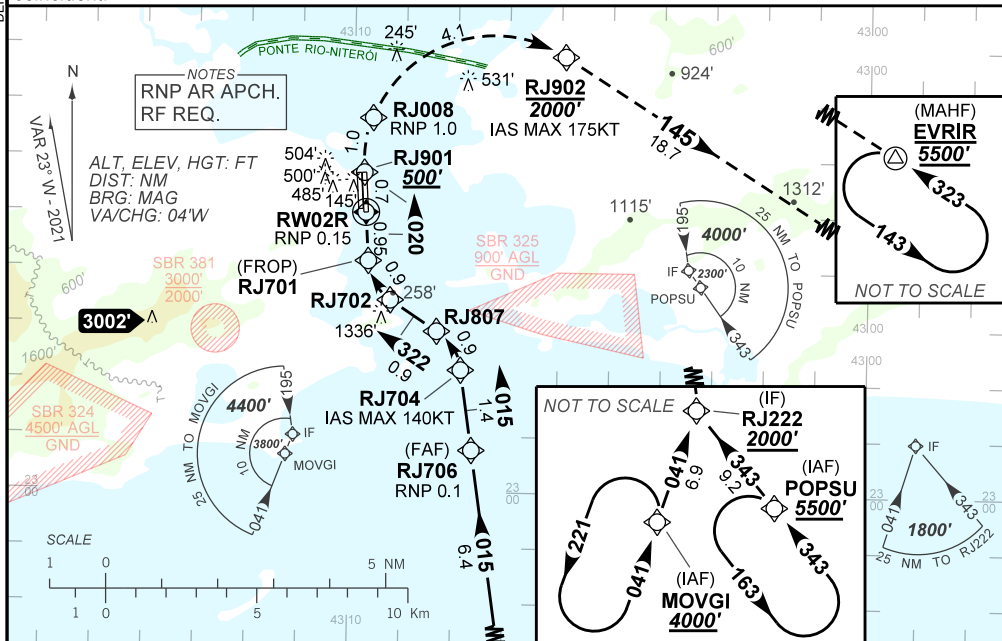
TEMP LNAV/VNAV <b>MIN 10°C / MAX 45°C</b>	FINAL CRS <b>020°</b>	FAF: <b>1550'</b>	RNP 0.1 DA / (OCH): <b>305' / (296')</b>	<b>N/A</b>
--	--------------------------	----------------------	---	------------

APCH Perdida: 1) Subir para **5500'**. Manter rumo **020** até RJ901. Após, curvar à DIREITA até RJ902. Após, rumo **145** até EVRIR para espera. 2) RNP menor que 1.0.

Missed APCH: 1) Climb to **5500'**. Maintain course **020** until RJ901. After, turn **RIGHT** until RJ902. After, course **145** until EVRIR for holding. 2) RNP below 1.0.

RMK: 1) Não efetuar transição para RNP da aproximação perdida antes de 0.87NM de RW02R. 2) Trajetória vertical e PAPI não coincidentes.

1) Do not perform RNP transition of Missed APCH before 0.87NM from RW02R. 2) Vertical path and PAPI not coincident.



RW02R	0.87	1.0	2.0	3.0	4.0	RJ706	Ground Speed (KT)	090	110	130	150	170	190
(ALT)	305	341	638	935	1233	1550	FPM	500	550	600	650	700	750
(HGT)	296	332	629	926	1224	1541	FAF-MAPT	NIL					

STRAIGHT-IN	CAT	A	B	C	D	E	
	DA / (OCH)	305' / (296')				NA	
RNP 0.1	ALS/NO ALS/ RVR ALS (m)	NIL / 1600 / NIL				NA	

**AUTORIZAÇÃO ESPECIAL PARA AERONAVE E TRIPULAÇÃO REQUERIDA  
SPECIAL AUTHORIZATION FOR AIRCRAFT AND CREW REQUIRED**

CHANGES: IDENT, LAYOUT, VAR.