

STANDARD DEPARTURE CHART
INSTRUMENT (SID)

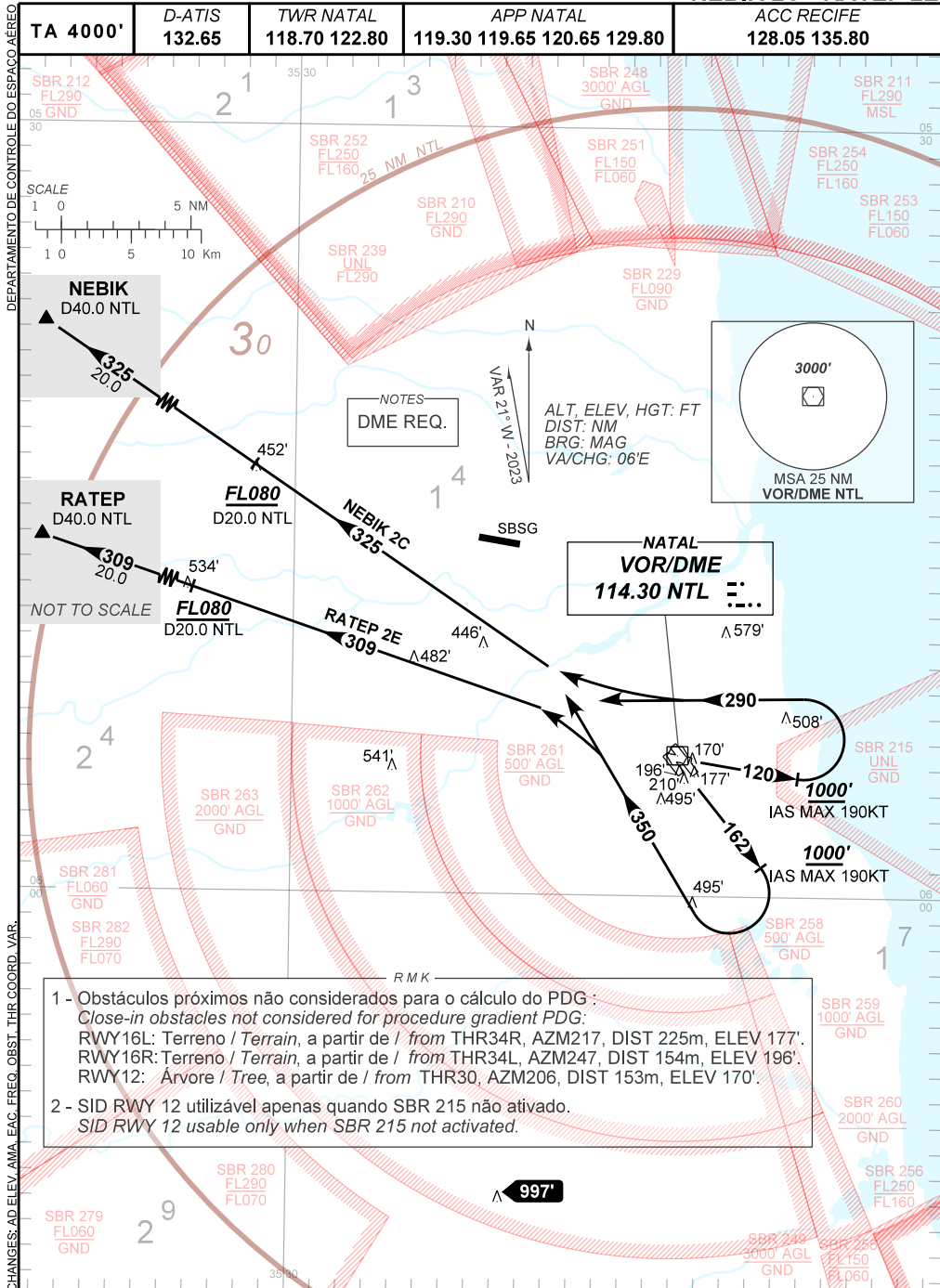
NATAL / Campo Augusto Severo, MIL (SBNT)

RWY 12/16L/16R

NEBIK 2C - RATEP 2E

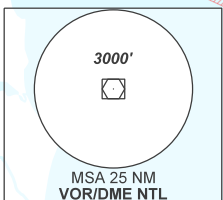
AD ELEV: 169'

TA 4000'	D-ATIS 132.65	TWR NATAL 118.70 122.80	APP NATAL 119.30 119.65 120.65 129.80	ACC RECIFE 128.05 135.80
----------	---------------	-------------------------	---------------------------------------	--------------------------



NOTES
DME REQ.

ALT, ELEV, HGT: FT
DIST: NM
BRG: MAG
VA/CHG: 06'E



NATAL
VOR/DME
114.30 NTL

- Obstáculos próximos não considerados para o cálculo do PDG:
Close-in obstacles not considered for procedure gradient PDG:
RWY16L: Terreno / Terrain, a partir de / from THR34R, AZM217, DIST 225m, ELEV 177'.
RWY16R: Terreno / Terrain, a partir de / from THR34L, AZM247, DIST 154m, ELEV 196'.
RWY12: Árvore / Tree, a partir de / from THR30, AZM206, DIST 153m, ELEV 170'.
- SID RWY 12 utilizável apenas quando SBR 215 não ativado.
SID RWY 12 usable only when SBR 215 not activated.

CHANGES: AD ELEV, AMA, EAC, FREQ, OBST, THR, COORD, VAR.