

**INSTRUMENT APPROACH  
CHART (IAC)**

**PRESIDENTE PRUDENTE / Presidente Prudente (SBDN)**

**AD ELEV: 1483'**

**RNP RWY 30**

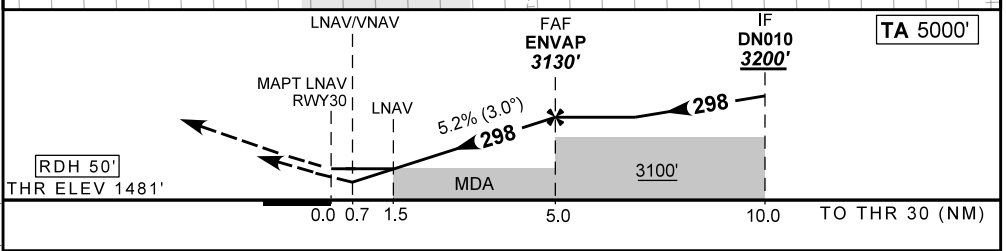
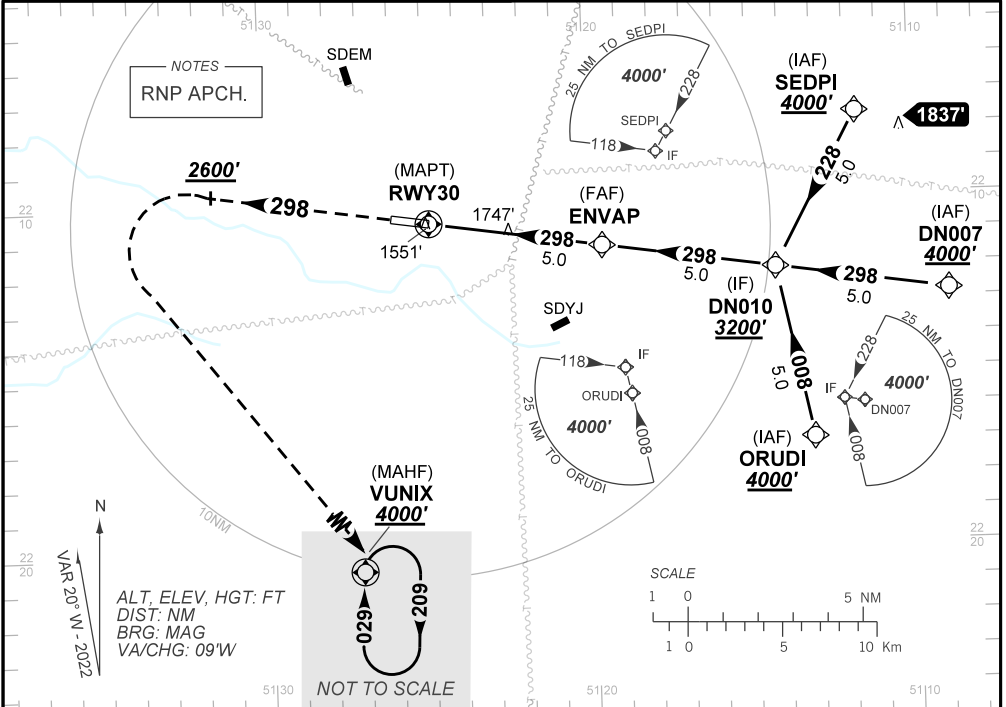
<b>ATIS</b> NIL	<b>APP PRUDENTE</b> 125.45	<b>TWR PRUDENTE</b> 118.45	<b>AFIS PRUDENTE</b> 125.45
--------------------	-------------------------------	-------------------------------	--------------------------------

<b>TEMP LNAV/VNAV</b> MIN 0°C / MAX 48°C	<b>FINAL CRS</b> 298°	<b>FAF:</b> 3130'	<b>LNAV/VNAV</b> DA / (OCH): 1731' / (250')	<b>LNAV</b> MDA / (OCH): 2000' / (520')
---	--------------------------	----------------------	--	--

APCH Perdida: Subir para **4000'**. Manter rumo **298** até **2600'**. Após, curvar à ESQUERDA direto VUNIX para espera.

Missed APCH: Climb to **4000'**. Maintain course **298** until **2600'**. After, turn LEFT direct VUNIX for holding.

DEPARTAMENTO DE CONTROLE DO ESPAÇO AÉREO



RWY30	1.5	2.0	3.0	4.0	ENVAP		Ground Speed (KT)	090	110	130	150	170	190
ALT	2000	2168	2486	2805	3130		FPM	500	600	700	800	900	NA
(HGT)	520	687	1005	1324	1649		FAF-MAPT	NIL					

STRAIGHT-IN	CAT	A	B	C	D	E	
	DA / (OCH)	1731' / (250')					NA
LNAV/VNAV	ALS/NO ALS/ RVR ALS (m)	NIL / 1300 / NIL					
	MDA / (OCH)	2000' / (520')					
LNAV	ALS/NO ALS/ RVR ALS (m)	NIL / 1600 / NIL			NIL / 2400 / NIL		
	MDA / (OCH)	NA					
CIRCLING	VIS (m)						