

**INSTRUMENT APPROACH  
CHART (IAC)**

**SANTA MARIA / Santa Maria (SBSM)**

**USO EXCLUSIVO ACFT MILITARES  
MILITARY ACFT ONLY**

**AD ELEV: 289'**

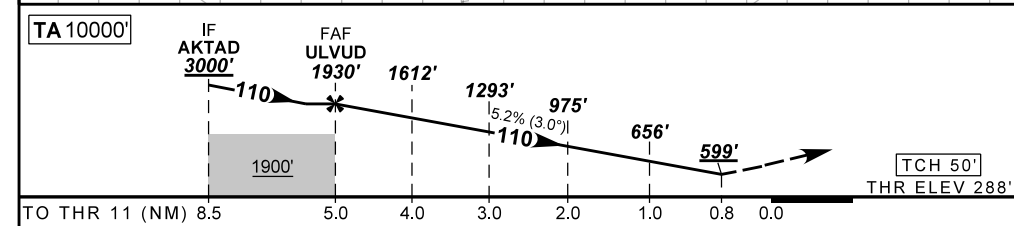
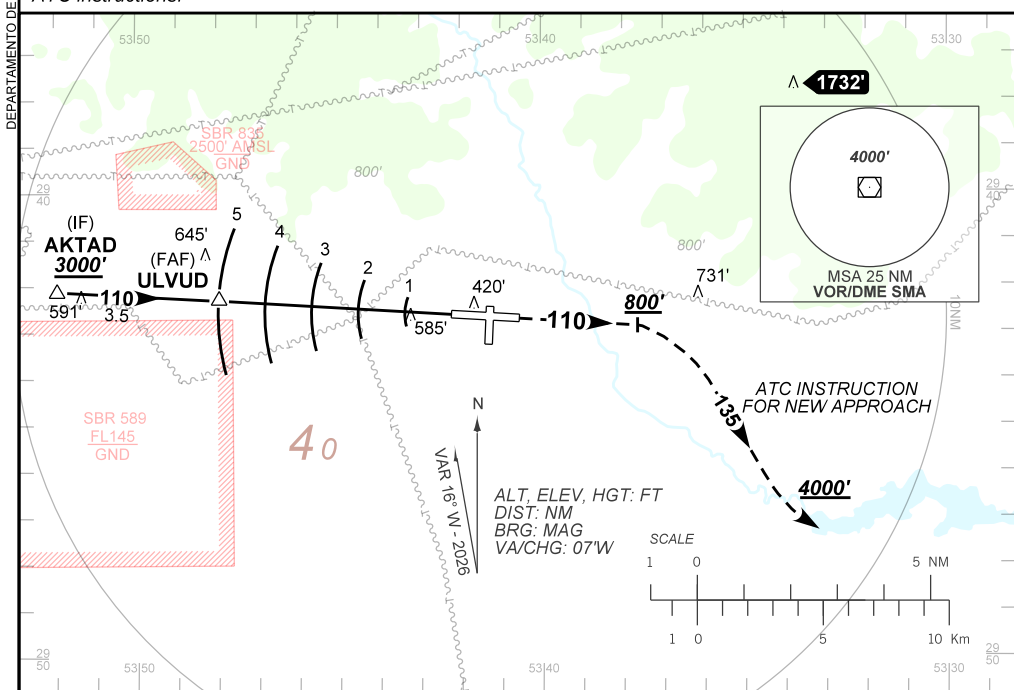
**PAR Y RWY 11**

ATIS 127.75	APP SANTA MARIA 118.30 119.35 121.35	PAR SANTA MARIA 129.05 129.40 129.80	TWR SANTA MARIA 118.30 118.85	GNDCL NIL
----------------	---	---	----------------------------------	--------------

N/A	FINAL CRS 110°	FAF: 1930'	PAR DA / (OCH): 599' / (311')	N/A
-----	-------------------	---------------	----------------------------------	-----

APCH Perdida: Subir para **4000'**. Manter rumo **110** até **800'**. Então, curvar à DIREITA rumo **135** e aguardar instruções ATC.

Missed APCH: Climb to **4000'**. Maintain course **110** until **800'**. Then, turn RIGHT course **135** and expect ATC instructions.



FAF	4.0	3.0	2.0	0.8	RWY11	Ground Speed (KT)	090	110	130	150	170	190
1930	1612	1293	975	599	ALT	FPM	500	600	700	800	900	1000
1642	1324	1005	687	311	(HGT)	FAF-MAPT	NA					

STRAIGHT-IN	CAT	A	B	C	D	E
PAR	DA / (OCH)	599' / (311')				
	ALS/NO ALS/ RVR ALS (m)	800 / 1400 / NIL				
CIRCLING	MDA / (OCH)	NA				
	VIS (m)	NA				