

STANDARD DEPARTURE CHART
INSTRUMENT (SID)

CAXIAS DO SUL / Hugo Cantergiani (SBCX)

RWY 15

RNAV BURPI 1C

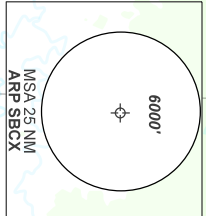
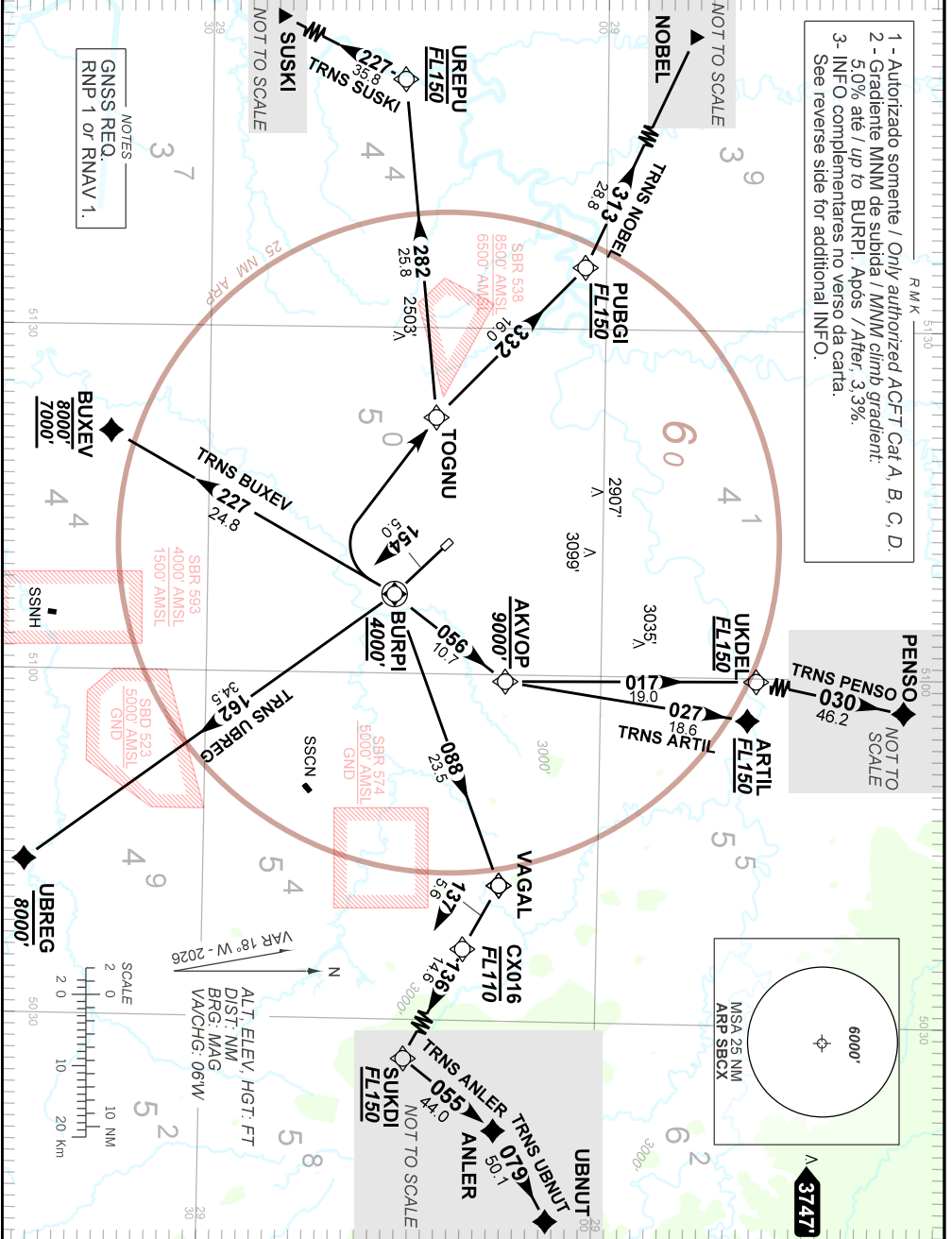
AD ELEV: 2474'

TA 10000'	AFIS CAXIAS 131.60	APP PALEGRE 119.00 120.10 120.55 128.90	ACC CURITIBA 126.75 134.25 135.90 123.725 126.10 127.50 128.45 135.85
-----------	-----------------------	---	---

DEPARTAMENTO DE CONTROLE DO ESPAÇO AEREO

NOTES
GNSS REQ.
RNP 1 of RNAV 1.

- 1 - Autorizado somente / Only authorized ACFT Cat A, B, C, D.
- 2 - Gradiente MNM de subida / MNM climb gradient: 5.0% até / up to BURPI. Após / After: 3.3%.
- 3 - INFO complementares no verso da carta. See reverse side for additional INFO.



ALT ELEV, HGT: FT
DST: NM
BRG: MAG
VA/CHG: 06W
SCALE
2 0
10 NM
2 0
10 20 km

CHANGES: EAC, FREQ, LAYOUT, PROC, TA, VAR.

AIRAC AMDT 2604A1 16 APR 26

SBCX_SID_000 1/2
SID RNAV BURPI 1C RWY 15

DEPARTAMENTO DE CONTROLE DO ESPAÇO AÉREO

CHANGES: EAC, FREQ, LAYOUT, PROC, TA, VAR.

— R M K —

- 4 - Obstáculos próximos não considerados para cálculo do (PDG):
Close-in obstacles not considered for procedure gradient (PDG):
SID AKVOP 1C - BURPI 1C - TOGNU 1C - VAGAL 1C:
Poste / *Pole*: a partir de / *from* THR33, AZM 239, DIST 115m, ELEV 2479'.
Prédio / *Building*: a partir de / *from* THR33, AZM 237, DIST 107m, ELEV 2476'.
Árvore / *Tree*: a partir de / *from* THR33, AZM 225, DIST 170m, ELEV 2483'.