

STANDARD DEPARTURE CHART
INSTRUMENT (SID)

AD ELEV: 2989'

CURITIBA / Afonso Pena, INTL (SBCT)

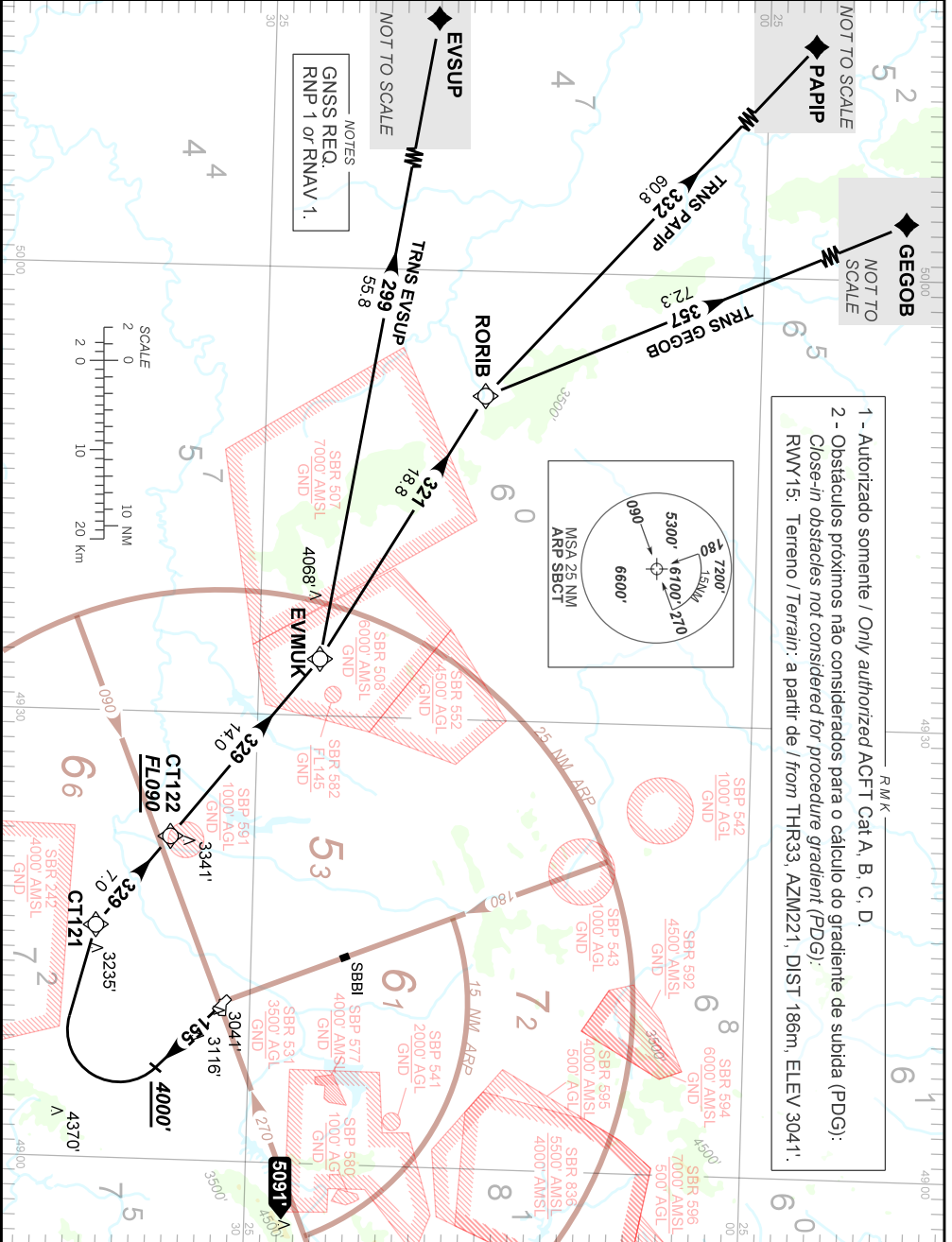
RWY 15

RNAV EVMUK 1A

TA 9000'	D-ATIS 127.80	TWR CURITIBA 118.15	APP CURITIBA 119.70 119.95 120.65 120.95 129.55 133.15	ACC CURITIBA 127.20 125.80 124.775 135.00
----------	------------------	------------------------	--------------------------------------------------------------	-------------------------------------------------

DEPARTAMENTO DE CONTROLE DO ESPAÇO AEREO

CHANGES: AMA, EAC, IDENT, LAYOUT, MSA, PROC, VAR.



- 1 - Autorizado somente / Only authorized ACFT Cat A, B, C, D.
- 2 - Obstáculos próximos não considerados para o cálculo do gradiente de subida (PDG):
Close-in obstacles not considered for procedure gradient (PDG):
RWY15: Terreno / Terrain: a partir de / from THR33, AZM221, DIST 186m, ELEV 3041'.