

**INSTRUMENT APPROACH  
CHART (IAC)**

**JOINVILLE / Lauro Carneiro de Loyola (SBJV)**

**AD ELEV: 15'**

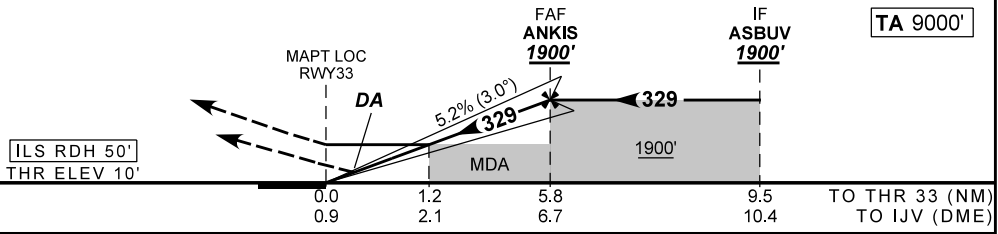
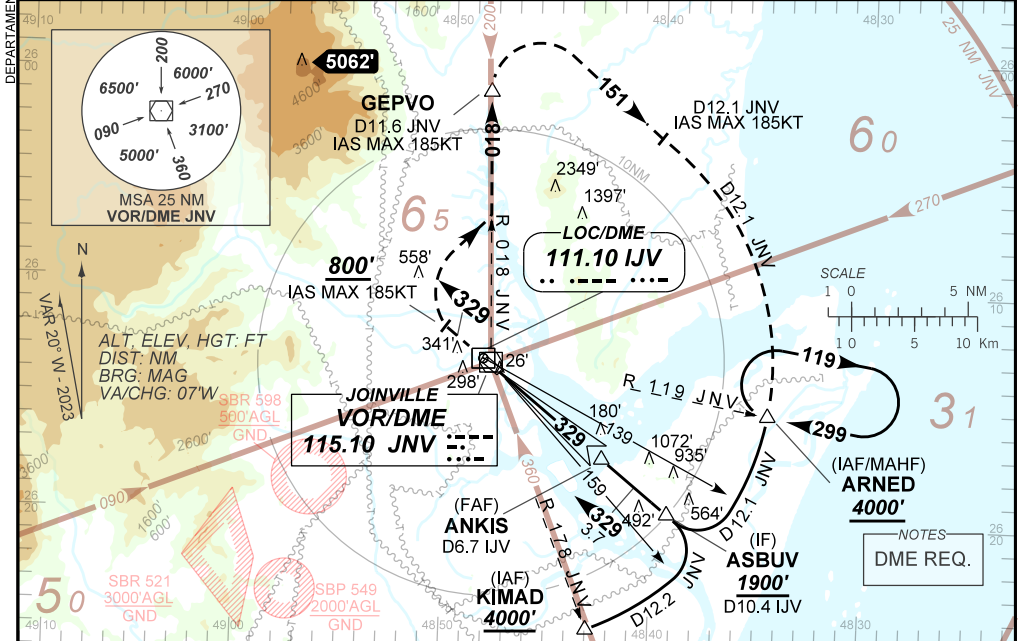
**ILS W or LOC W RWY 33**

ATIS <b>127.85</b>		APP CURITIBA <b>119.70 119.95 120.65 120.95 129.55 133.15</b>			TWR JOINVILLE <b>118.00</b>	GNDC <b>NIL</b>
-----------------------	--	--	--	--	--------------------------------	--------------------

LOC IJV <b>111.10 MHz</b>	FINAL CRS <b>329°</b>	FAF: <b>1900'</b>	CAT I DA / (OCH): <b>REFER TO MNM</b>	LOC MDA / (OCH): <b>430' / (420')</b>
------------------------------	--------------------------	----------------------	--	--

APCH Perdida: Subir para **4000'**. Manter proa **329** até cruzar **800'**. Curvar à DIREITA para interceptar RDL **018** do VOR JNV até GEPVO. Após, curvar à DIREITA na proa **151** para interceptar arco DME 12.1 NM de JNV até ARNED para espera.

Missed APCH: Climb to **4000'**. Maintain heading **329** until passing **800'**. Turn RIGHT to intercept **018** RDL JNV VOR to GEPVO. Then, turn RIGHT heading **151** to intercept 12.1 NM DME arc JNV VOR until ARNED for holding.



RWY33	1.2	2.0	3.0	4.0	ANKIS		Ground Speed (KT)	090	110	130	150	170	190
ALT	430	697	1015	1334	1900		FPM	500	600	700	800	900	NA
(HGT)	420	687	1005	1324	1890		FAF-MAPT	NA					

STRAIGHT-IN	CAT	A		B		C		D		E
		DA / (OCH)								
CAT I	3.0%	ALS/NO ALS/ RVR ALS (m)		NIL / 1200 / NIL						NA
		DA / (OCH)								
LOC		ALS/NO ALS/ RVR ALS (m)		NIL / 1300 / NIL						NA
		MDA / (OCH)								
		VIS (m)		NIL / 1600 / NIL				NIL / 1900 / NIL		

CHANGES: PROC. VAR.