

**INSTRUMENT APPROACH  
CHART (IAC)**

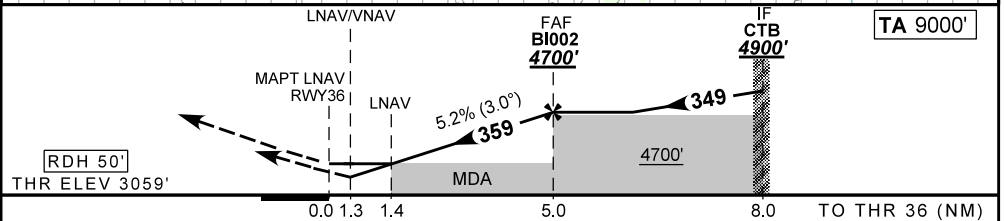
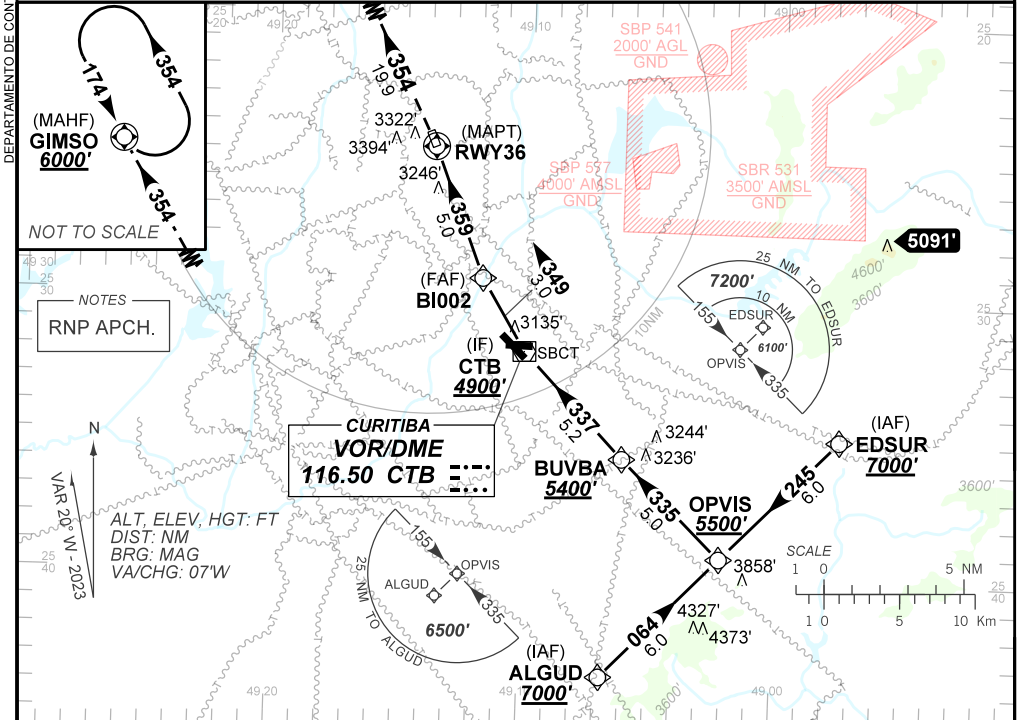
**CURITIBA / Bacacheri (SBBI)**

**AD ELEV: 3059'**

**RNP Z RWY 36**

ATIS <b>132.325</b>	APP CURTIBA <b>119.70 119.95 120.65 120.95 129.55 133.15</b>			TWR BACACHERI <b>118.90</b>	AFIS BACACHERI <b>118.90 119.95</b>	GND C BACACHERI <b>121.80</b>
TEMP LNAV/VNAV <b>MIN -10°C / MAX 50°C</b>	FINAL CRS <b>359°</b>	FAF: <b>4700'</b>	LNAV/VNAV DA / (OCH): <b>3534' / (475')</b>		LNAV MDA / (OCH): <b>3560' / (510')</b>	

APCH Perdida: Subir para **6000'**. Curvar à ESQUERDA rumo **354** até GIMSO para espera.  
Missed APCH: Climb to **6000'**. Turn LEFT course **354** until GIMSO for holding.



RWY36	1.4	2.0	3.0	4.0	B1002	Ground Speed (KT)	090	110	130	150	170	190
ALT	3560	3746	4064	4383	4700	FPM	500	600	700	800	900	NA
(HGT)	510	687	1005	1324	1641	FAF-MAPT	NIL					

STRAIGHT-IN	CAT	A	B	C	D	E	
	DA / (OCH)	3534' / (475')					NA
LNAV/VNAV	ALS/NO ALS/ RVR ALS (m)	NIL / 2200 / NIL					
	MDA / (OCH)	3560' / (510')					
LNAV	ALS/NO ALS/ RVR ALS (m)	NIL / 2200 / NIL			NIL / 2300 / NIL		
	MDA / (OCH)	NA					
CIRCLING	MDA / (OCH)	NA					
	VIS (m)	NA					

CHANGES: EAC. LAYOUT. MM. OPR. PROC.