

**INSTRUMENT APPROACH
CHART (IAC)
AD ELEV: 285'**

CACEQUI / Saicã, MIL (SSCQ)

**USO EXCLUSIVO ACFT MILITARES
MILITARY ACFT ONLY**

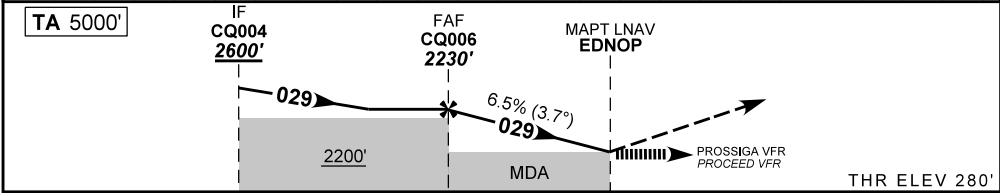
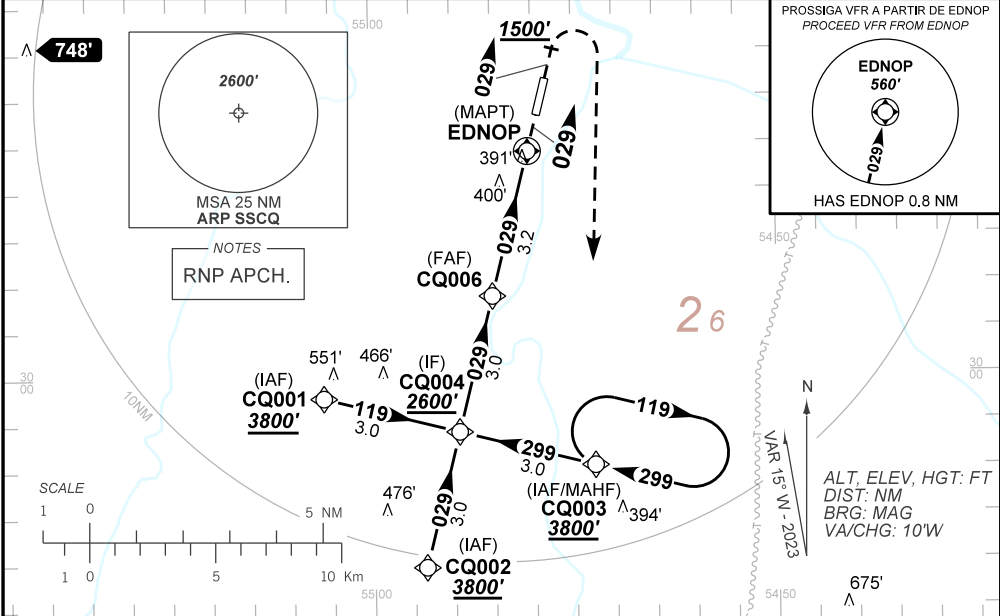
**RNP 029
PINS - (CAT H)**

DEPARTAMENTO DE CONTROLE DO ESPAÇO AÉREO

ATIS SANTA MARIA 127.75	APP SANTA MARIA 119.35 121.35		TWR NIL	GNDC NIL
N/A	FINAL CRS 029°	FAF: 2230'	N/A	
			LNAV RASS (SBSM) MDA / (OCH): 960' / (680')	

APCH Perdida: Subir para **3800'**. Manter proa **029** até **1500'**. Após, curvar à DIREITA direto CQ003 para espera.
Missed APCH: Climb to **3800'**. Maintain heading **029** until **1500'**. After, turn RIGHT direct CQ003 for holding.

RMK: Informações complementares no verso.
See reverse side for additional information.



TO MAPT (NM)	6.2	3.2	0.0	THR ELEV 280'
TO THR 03 (NM)	7.0	4.0	0.8	

	CQ006	2.0	1.0	EDNOP	MAPT	Ground Speed (KT)	060	070	080	090	100	110
	2230	1750	1355	960	ALT	FPM	390	450	520	580	NA	NA
	NIL					(HGT)	FAF-MAPT	NIL				

STRAIGHT-IN	CAT	H
LNAV RASS (SBSM)	MDA / (OCH)	960' / (680')
	VIS (m)	1500
CIRCLING	MDA / (OCH)	NA
	VIS (m)	

CHANGES: NEW CHART.

— R M K —

- 1 - Requerido FPL "Y" com mudança de regras de voo para VFR em EDNOP.
FPL "Y" required with flight rules change to VFR at EDNOP.
- 2 - Procedimento exclusivo para helicópteros.
Exclusive procedure for helicopters.
- 3 - É de responsabilidade do piloto em comando a separação com obstáculos e terreno entre EDNOP e a THR03.
It is the responsibility of the pilot in command for separation with obstacles and terrain between EDNOP and THR03.
- 4 - Utilizar o ajuste-altímetro de SBSM.
Use altimeter setting from SBSM.

DEPARTAMENTO DE CONTROLE DO ESPAÇO AÉREO

CHANGES: NEW CHART.