

**INSTRUMENT APPROACH
CHART (IAC)**

CANOAS / Campo Nossa Senhora de Fátima, MIL (SBCO)

VOR Z RWY 31

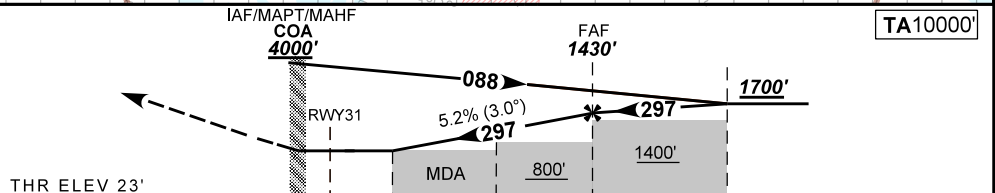
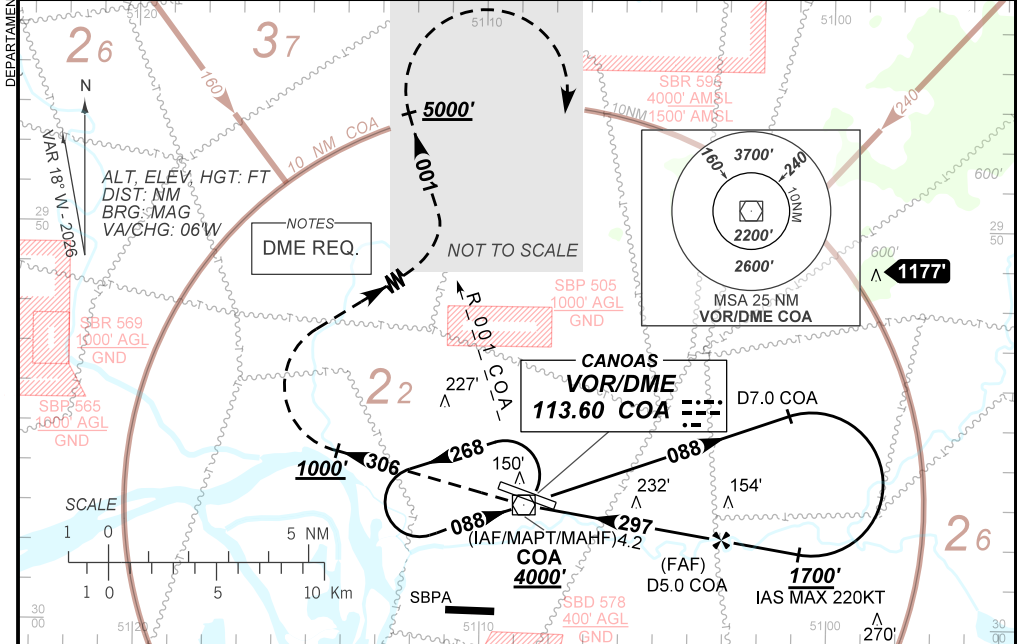
AD ELEV: 26'

ATIS NIL	APP PALEGRE 119.00 120.10 120.55 128.90			TWR CANOAS 118.50 122.80 (MIL)	GNDC CANOAS 121.70
VOR COA 113.60 MHz	FINAL CRS 297°	FAF: 1430'	N/A		VOR MDA / (OCH): 510' / (490')

APCH Perdida: Subir para **5000'**. Manter proa **306** até **1000'**. Após, curvar à DIREITA para interceptar a RDL **001** do VOR COA até **5000'**. Então, curvar à DIREITA direto VOR COA para espera.

Missed APCH: Climb to **5000'**. Maintain heading **306** until **1000'**. After, turn RIGHT to intercept **001** RDL COA VOR until **5000'**. Then, turn RIGHT direct to COA VOR for holding.

RMK: Não autorizado esperas simultâneas sobre Canoas e Porto Alegre no mesmo nível.
Unauthorized simultaneous holding over Canoas and Porto Alegre on the same flight level.



THR ELEV 23'						
TO THR 31 (NM)	0.0	1.4	2.3	4.2	6.2	
TO COA (DME)	0.8	2.2	3.1	5.0	7.0	

RWY 31	1.4	2.3	3.0	4.0	FAF		Ground Speed (KT)	090	110	130	150	170	190
ALT	510	809	1028	1347	1430		FPM	500	600	700	800	900	1000
(HGT)	490	786	1005	1324	1407		FAF-MAPT	NA					

STRAIGHT-IN	CAT	A	B	C	D	E
	MDA / (OCH)	510' / (490')				
VOR	ALS/NO ALS/ RVR ALS (m)	NIL / 1600 / NIL			NIL / 2300 / NIL	
CIRCLING	MDA / (OCH)	NA				
	VIS (m)					

CHANGES: PROC. OBST. TA. VAR.