

**INSTRUMENT APPROACH
CHART (IAC)**

RIO DE JANEIRO / Santos Dumont (SBRJ)

RNP E RWY 20L

(CAT A,B,C)

AD ELEV: 10'

D-ATIS 132.65	APP RIO 124.95 134.95 129.20 120.75 129.80 125.95 134.40 121.25	TWR RIO 118.70	GNDC RIO 121.70
-------------------------	---	--------------------------	---------------------------

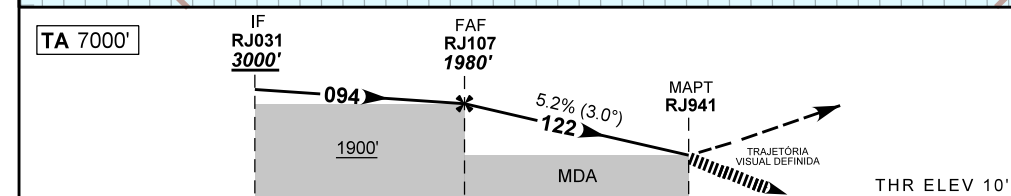
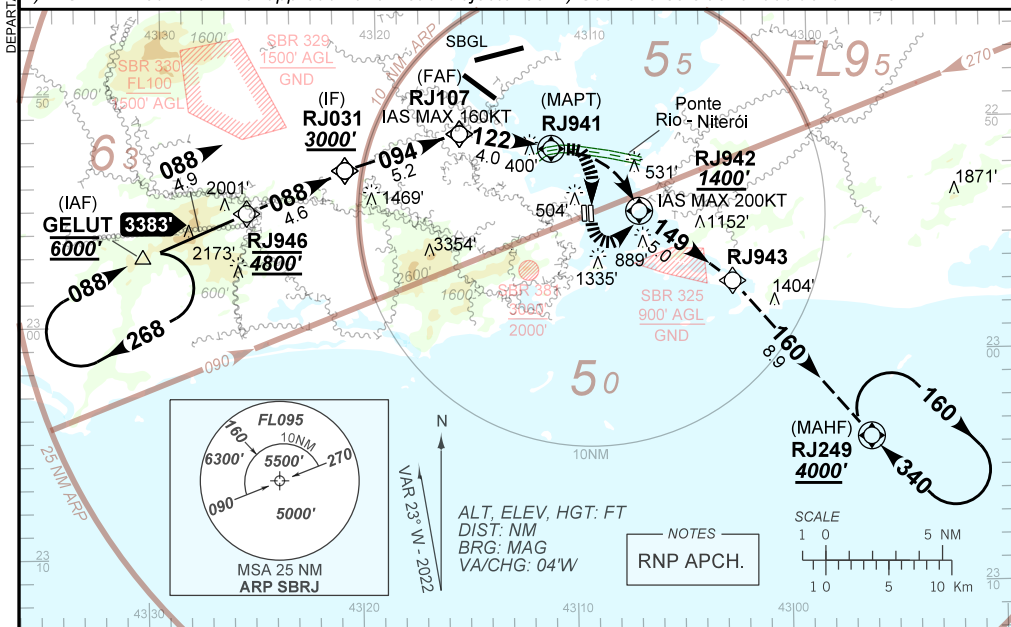
N/A	FINAL CRS 122°	FAF: 1980'	N/A	N/A
-----	--------------------------	----------------------	-----	-----

APCH Perdida: Subir para **4000'**. Curvar à DIREITA direto RJ942. Curvar à ESQUERDA no rumo **149** até RJ943. Curvar à DIREITA no rumo **160** até RJ249 para espera.

Missed APCH: Climb to **4000'**. Turn RIGHT direct to RJ942. Turn LEFT course **149** up to RJ943. Turn RIGHT course **160** up to RJ249 for holding.

RMK: 1) IAS MAX 160KT na aproximação final e nas trajetórias visuais. 2) INFO complementares no verso.

1) IAS MAX 160KT on final approach and visual trajectories. 2) See reverse side for additional INFO.



TO MAPT(NM)	9.2	4.0	0.0	THR ELEV 10'
-------------	-----	-----	-----	--------------

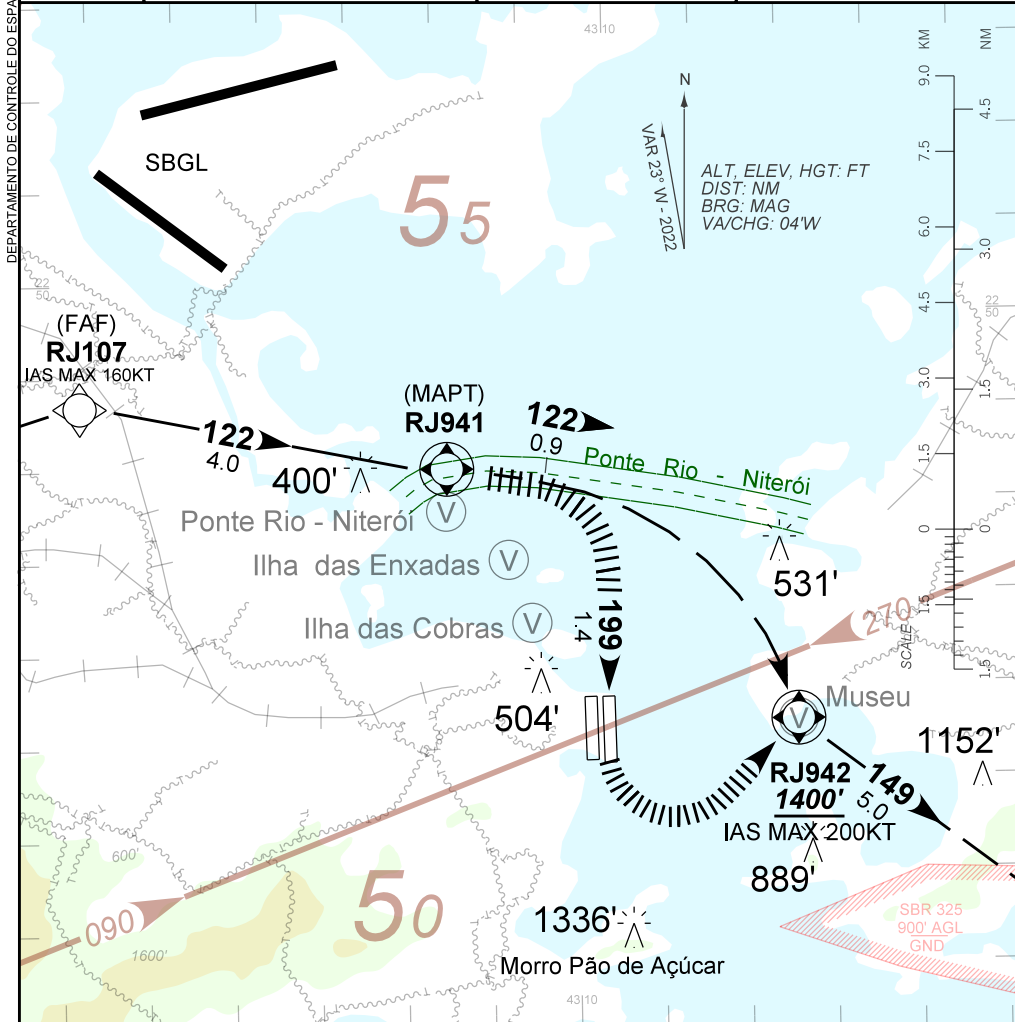
	RJ107	3.0	2.0	1.0	RJ941	MAPT	Ground Speed (KT)	090	110	130	150	170	190
	1980	1656	1337	1019	700	ALT	FPM	500	600	700	800	900	NA
	1970	1646	1327	1009	690	(HGT)	FAF-MAPT	NIL					

STRAIGHT-IN	CAT	A	B	C	D	E
LNAV/VNAV	DA / (OCH)				NA	
	ALS/NO ALS/ RVR ALS (m)					
LNAV	MDA / (OCH)				NA	
	ALS/NO ALS/ RVR ALS (m)					
CIRCLING	MDA / (OCH)		900' / (890')			NA
	VIS (m)		4400			

CHANGES: LAYOUT.

DEPARTAMENTO DE CONTROLE DO ESPAÇO AÉREO

D-ATIS 132.65	APP RIO 124.95 134.95 129.20 120.75 129.80 125.95 134.40 121.25	TWR RIO 118.70	GNDC RIO 121.70
-------------------------	---	--------------------------	---------------------------



TRAJETÓRIA VISUAL DEFINIDA RWY 20L
VISUAL PRESCRIBED TRACK RWY 20L

- 3) O piloto deverá estar em contato visual e prover sua própria separação com as referências visuais:
The pilot should have visual contact and provide his own separation with the visual references:
PONTE RIO - NITERÓI, ILHA DAS ENXADAS, ILHA DAS COBRAS e / and MUSEU.
- 4) Em caso de arremetida durante a manobra para circular: Subir para 4000' e voar direto RJ942 para interceptar a trajetória de aproximação perdida publicada.
In case of go around during the visual manoeuvring: Climb to 4000' and fly direct RJ942 to intercept the trajectory of the published missed approach .

CHANGES: LAYOUT.