

**INSTRUMENT APPROACH
CHART (IAC)**

CAMPINAS / Viracopos, INTL (SBKP)

AD ELEV: 2170'

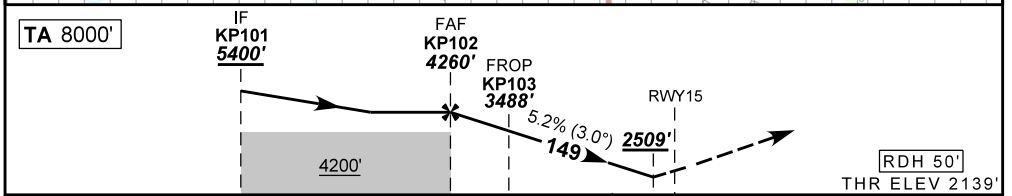
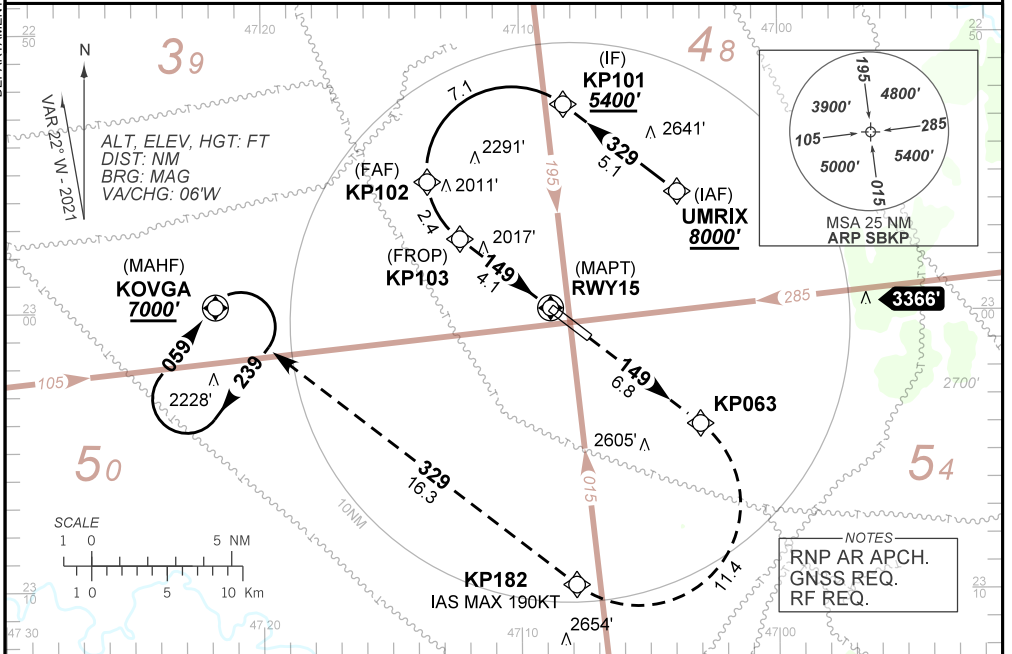
RNP Y RWY 15 (AR)

D-ATIS 127.825	APP SÃO PAULO 119.05 119.15 119.25 119.60 119.80 120.05 120.25 120.45 120.85 121.40 122.75 123.25 124.15	TWR CAMPINAS 118.25	GNDC CAMPINAS 121.90
--------------------------	--	-------------------------------	--------------------------------

TEMP LNAV/VNAV MIN -10°C / MAX 45°C	FINAL CRS 149°	FAF: 4260'	RNP 0.3 DA / (OCH): 2509' / (370')	N/A
---	--------------------------	----------------------	--	------------

APCH Perdida: 1) Subir para **7000'**. Manter rumo **149** até KP063. Após, curvar à DIREITA até KP182. Após, rumo **329** até KOVGA para espera. 2) IAS MAX 190KT até KP182.
Missed APCH: 1) Climb to **7000'**. Maintain course **149** until KP063. After, turn RIGHT until KP182. After, course **329** until KOVGA for holding. 2) IAS MAX 190KT until KP182.

DEPARTAMENTO DE CONTROLE DE ESPAÇO AÉREO



TO THR 15 (NM)	13.6	6.5	4.1	1.0	0.0
----------------	------	-----	-----	-----	-----

KP102	5.0	KP103	3.0	2.0	1.0	RWY15	Ground Speed (KT)	090	110	130	150	170	190
4260	3781	3488	3144	2826	2509	ALT	FPM	500	600	700	800	900	NA
2121	1642	1349	1005	687	370	(HGT)	FAF-MAPT	NA					

STRAIGHT-IN	CAT	A	B	C	D	E
	DA / (OCH)	2509' / (370')				
RNP 0.3	ALS/NO ALS/ RVR ALS (m)	1000 / 1700 / NIL				
		NA				

**AUTORIZAÇÃO ESPECIAL PARA AERONAVE E TRIPULAÇÃO REQUERIDA
SPECIAL AUTHORIZATION FOR AIRCRAFT AND CREW REQUIRED**

CHANGES: NEW CHART.