

**INSTRUMENT APPROACH  
CHART (IAC)**

**ANGRA DOS REIS / Angra dos Reis (SDAG)**

**RNP RWY 10**

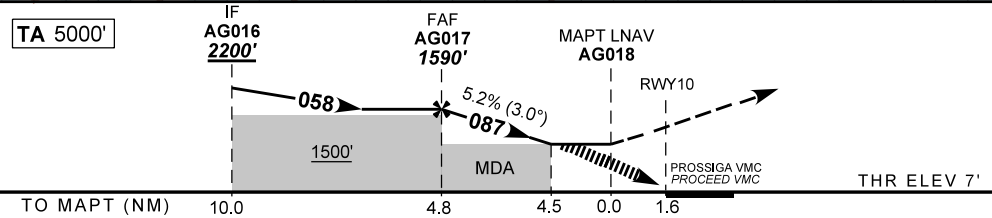
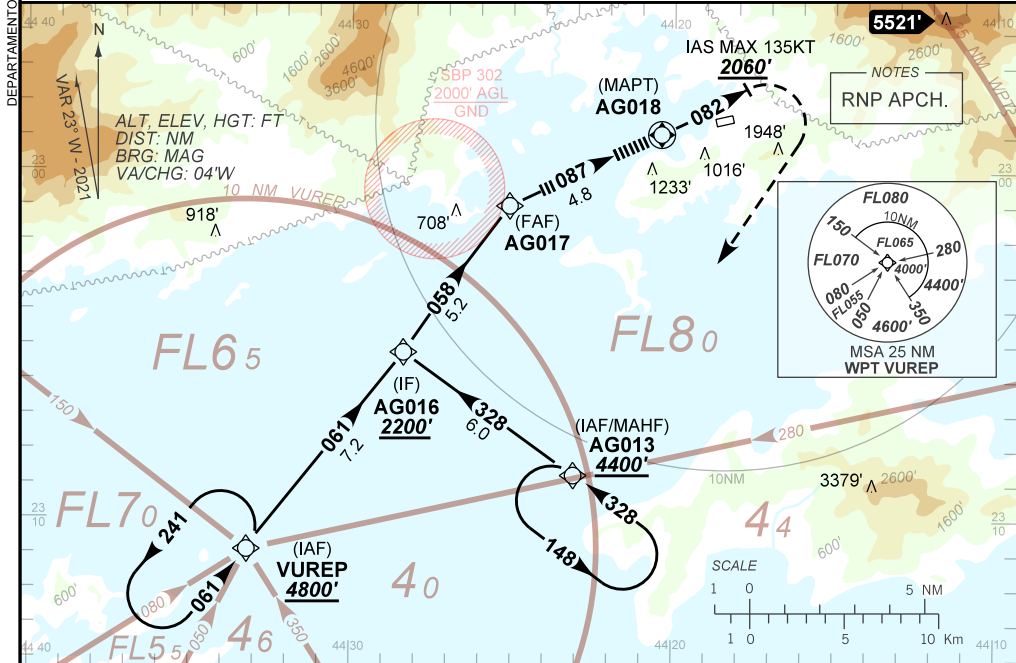
(CAT A, B)

**AD ELEV: 10'**

ATIS <b>NIL</b>	ERAA <b>132.35</b>	APP RIO <b>119.00 120.55 121.35 123.90 124.70 125.60 126.20 129.80 132.50 133.30 133.70</b>				FCA OESTE <b>134.45</b>	FCA ANGRA <b>125.275</b>
<b>NA</b>		FINAL CRS <b>087°</b>	FAF: <b>1590'</b>	<b>NA</b>		LNAV MDA / (OCH): <b>1510' / (1500')</b>	

APCH Perdida: Subir para **4400'**, gradiente MNM 5%. Curvar à ESQUERDA na proa **082** até **2060'**. Após, curvar à DIREITA direto AG013 para espera.

Missed APCH: Climb to **4400'**, MNM gradient 5%. Turn LEFT heading **082** until **2060'**. After, turn RIGHT direct AG013 for holding.



			AG017	4.5	MAPT	Ground Speed (KT)	090	110	130	150	170	190
			1590	1510	ALT	FPM	500	600	700		NA	
			NIL		(HGT)	FAF-MAPT						

STRAIGHT-IN	CAT	A	B	C	D	E
	MDA / (OCH)	1510' / (1500')			NA	
LNAV	ALS/NO ALS/ RVR ALS (m)	NIL / 5000 / NIL				
CIRCLING	MDA / (OCH)	NA				
	VIS (m)					

CHANGES: FREQ, LAYOUT.