

**INSTRUMENT APPROACH
CHART (IAC)**

VILHENA / Vilhena (SBVH)

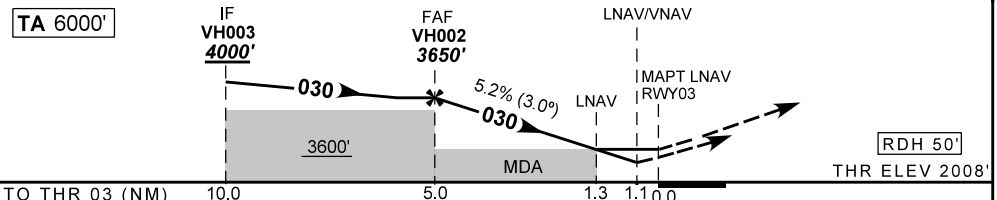
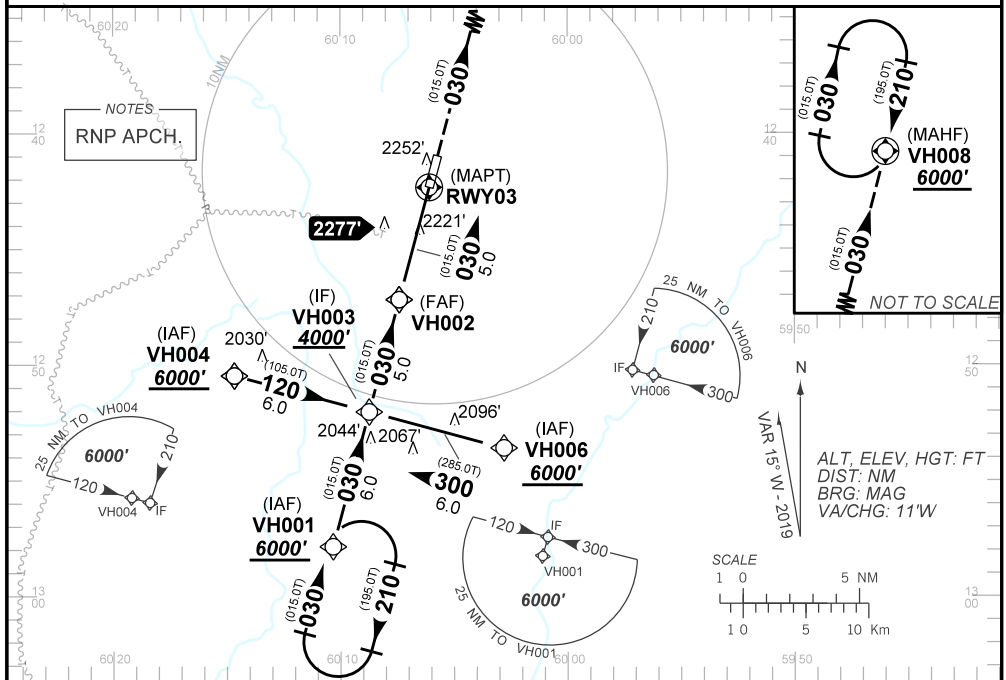
AD ELEV: 2018'

RNAV(GNSS) Z RWY 03

| | | | | | |
|--------------------|--|----------------------|--|---------------------------------|--|
| ATIS NIL | ACC AMAZÔNICO 123.55 128.30 123.85 128.05 121.50 | | | R-AFIS VILHENA 125.90 | GNDC VILHENA NIL |
| N/A | FINAL CRS 030° | FAF: 3650' | LNAV/VNAV DA / (OCH): 2431' / (423') | | LNAV MDA / (OCH): 2470' / (470') |

APCH Perdida: Subir para **6000'**. Manter rumo **030** até VH008 para espera.
Missed APCH: Climb to **6000'**. Maintain course **030** until VH008 for holding.

RMK: Para sistemas não compensados, LNAV/VNAV não autorizado abaixo de 0°C e acima de 50°C.
For uncompensated systems, LNAV/VNAV procedure not authorized below 0°C and above 50°C.



| | | | | | | | | | | | | | |
|--|-------|------|------|------|------|-------|-------|----------|-----|-----|-----|-----|------|
| | VH002 | 4.0 | 3.0 | 2.0 | 1.3 | RWY03 | KT | 090 | 110 | 130 | 150 | 170 | 190 |
| | | 3650 | 3332 | 3013 | 2695 | 2470 | FPM | 500 | 600 | 700 | 800 | 900 | 1000 |
| | | 1642 | 1324 | 1005 | 687 | 470 | (HGT) | FAF-MAPT | NA | | | | |

| | | | | | | |
|-------------|-------------------------|------------------|---|------------------|---|---|
| STRAIGHT-IN | CAT | A | B | C | D | E |
| | DA / (OCH) | 2431' / (423') | | | | |
| LNAV/VNAV | ALS/NO ALS/ RVR ALS (m) | NIL / 2000 / NIL | | | | |
| | MDA / (OCH) | 2470' / (470') | | | | |
| LNAV | ALS/NO ALS/ RVR ALS (m) | NIL / 2000 / NIL | | NIL / 2100 / NIL | | |
| | MDA / (OCH) | NA | | | | |
| CIRCLING | MDA / (OCH) | NA | | | | |
| | VIS (m) | NA | | | | |

CHANGES: NEW CHART.