

INSTRUMENT APPROACH  
CHART (IAC)

BAURU / Bauru (SBBU)

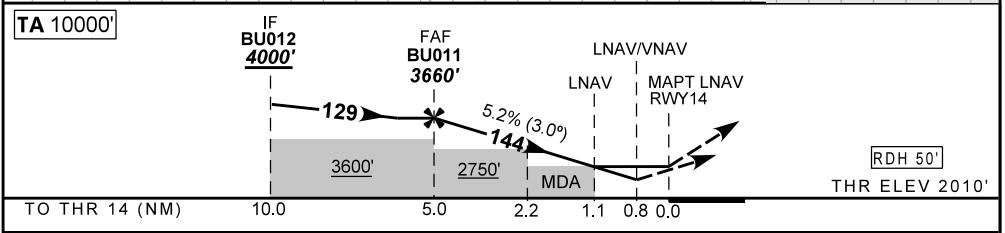
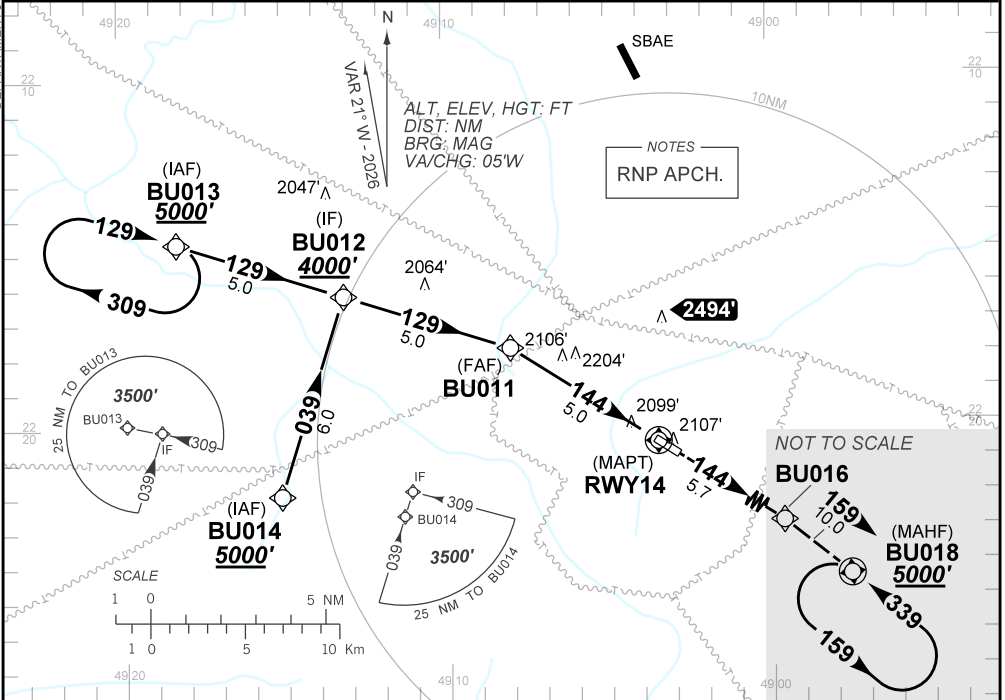
AD ELEV: 2025'

RNP Z RWY 14

ATIS <b>127.875</b>	APP BAURU <b>121.30</b>	AFIS BAURU <b>121.30</b>	GNDC <b>NIL</b>
TEMP LNAV/VNAV <b>MIN -05°C / MAX 40°C</b>	FINAL CRS <b>144°</b>	FAF: <b>3660'</b>	LNAV <b>MDA / (OCH): 2410' (400')</b>
		LNAV/VNAV <b>DA / (OCH): 2320' / (310')</b>	

APCH Perdida: Subir para **5000'**, rumo **144** até BU016. Após, curva à DIREITA, rumo **159** até BU018 para espera.

Missed APCH: Climb to **5000'**, course **144** to BU016. Then, turn RIGHT, course **159** to BU018 for holding.



BU011	4.0	3.0	2.2	2.0	1.1	RWY14	Ground Speed (KT)	090	110	130	150	170	190
3660	3334	3016	2750	2697	2410	ALT	FPM	500	600	700	800	950	NA
1650	1324	1006	740	687	400	(HGT)	FAF-MAPT	NA					

STRAIGHT-IN	CAT	A	B	C	D	E
LNAV/VNAV	DA / (OCH)	2320' / (310')			NA	
	ALS/NO ALS/ RVR ALS (m)	NIL / 1600 / NIL				
LNAV	MDA / (OCH)	2410' / (400')				
	ALS/NO ALS/RVR ALS (m)	NIL / 1600 / NIL			NIL / 1800 / NIL	
CIRCLING	MDA / (OCH)	NA				
	VIS (m)					

CHANGES: TA, VAR.

DEPARTAMENTO DE CONTROLE DO ESPAÇO AÉREO