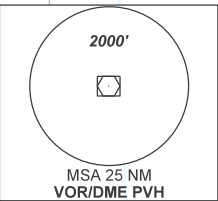


AD ELEV: 295'

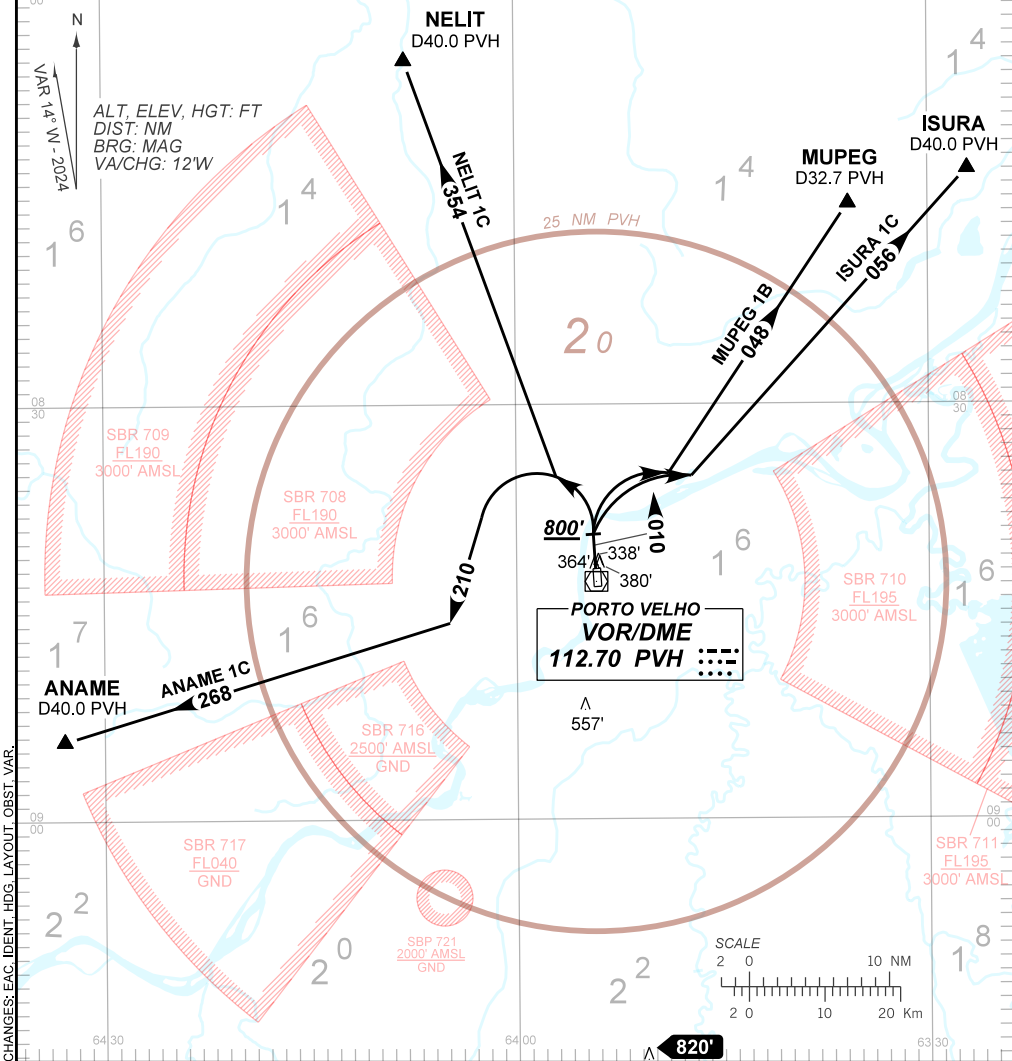
ANAME 1C - ISURA 1C - MUPEG 1B - NELIT 1C

TA 3000'	D-ATIS 127.45	TWR PORTO VELHO 118.20 118.55	APP PORTO VELHO 120.25 120.80	ACC AMAZÔNICO 125.85 128.30 126.50 135.25
----------	------------------	----------------------------------	----------------------------------	--

DEPARTAMENTO DE CONTROLE DO ESPAÇO AÉREO



1 - Obstáculos próximos não considerados para cálculo do gradiente do procedimento (PDG):
Close-in obstacles not considered for procedure gradient (PDG):
Terreno / Terrain : a partir de / from THR19, AZM 303, DIST 395m, ELEV 368'.
Terreno / Terrain : a partir de / from THR19, AZM 043, DIST 455m, ELEV 370'.



CHANGES: EAC, IDENT, HDG, LAYOUT, OBST, VAR.