

**INSTRUMENT APPROACH
CHART (IAC)**

SÃO GONÇALO DO AMARANTE / Gov. Aluizio Alves, INTL (SBSG)

AD ELEV: 273'

VOR RWY 30

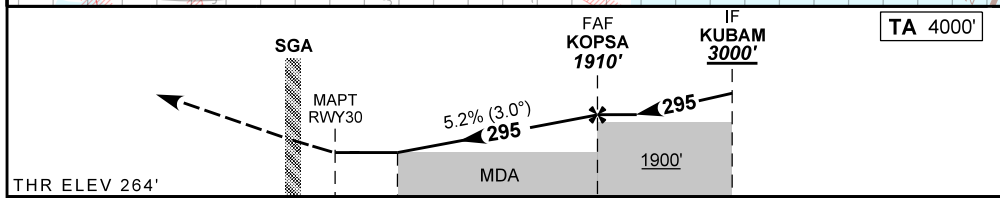
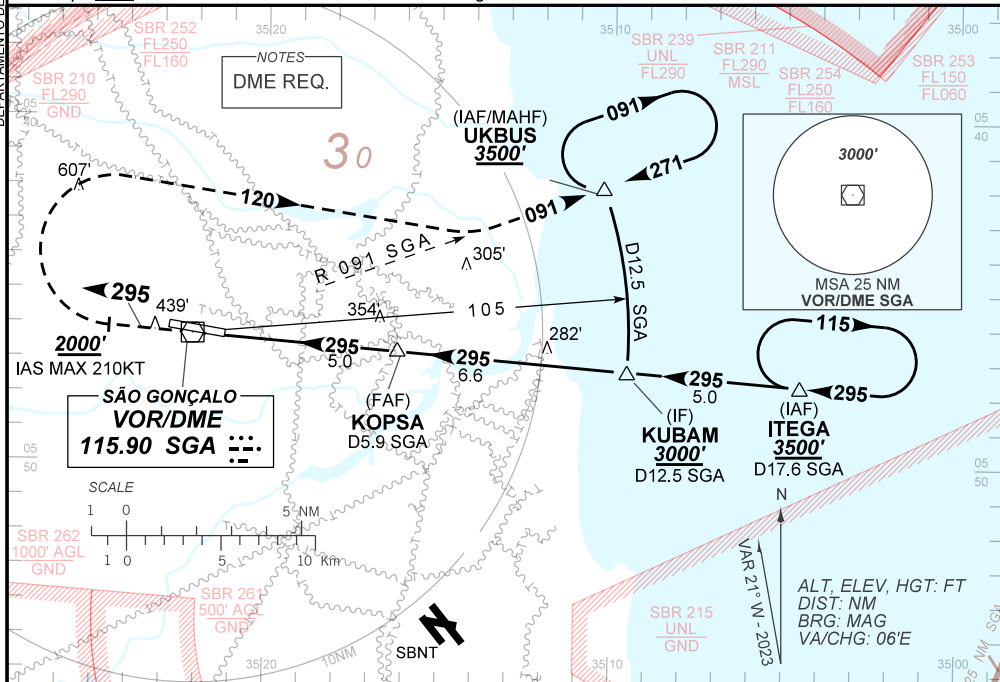
ATIS 127.60	APP NATAL 119.30 119.65 120.65 129.80	TWR SÃO GONÇALO 118.20 118.85	GNDC SÃO GONÇALO 121.70
-----------------------	---	---	-----------------------------------

VOR SGA 115.90 MHz	FINAL CRS 295°	FAF: 1910'	N/A	VOR MDA / (OCH): 610' / (350')
------------------------------	--------------------------	----------------------	-----	--

APCH Perdida: Subir para **3500'**. Manter rumo **295** até cruzar **2000'**. Após, curvar à DIREITA, proa **120** para interceptar RDL **091** VOR SGA até UKBUS para espera.

Missed APCH: Climb to **3500'**. Maintain course **295** until passing **2000'**. After, turn RIGHT, heading **120** to intercept **091** RDL SGA VOR until UKBUS for holding.

DEPARTAMENTO DE CONTROLE DO ESPAÇO AÉREO



THR ELEV 264'	0.0	0.9	5.0	11.6	TO THR 30 (NM)
	0.9	1.8	5.9	12.5	TO SGA (DME)

RWY30	0.9	2.0	3.0	4.0	KOPSA	Ground Speed (KT)	090	110	130	150	170	190
ALT	610	951	1269	1588	1910	FPM	500	600	700	800	900	1000
(HGT)	350	687	1005	1324	1646	FAF-MAPT	NIL					

STRAIGHT-IN	CAT	A	B	C	D	E
	MDA / (OCH)	610' / (350')				
VOR	ALS/SNO ALS/ RVR ALS (m)	NIL / 1600 / 1550				
CIRCLING	MDA / (OCH)	NA				
	VIS (m)					

CHANGES: AD ELEV. PROC. THR ELEV. VAR.