

STANDARD DEPARTURE CHART
INSTRUMENT (SID)

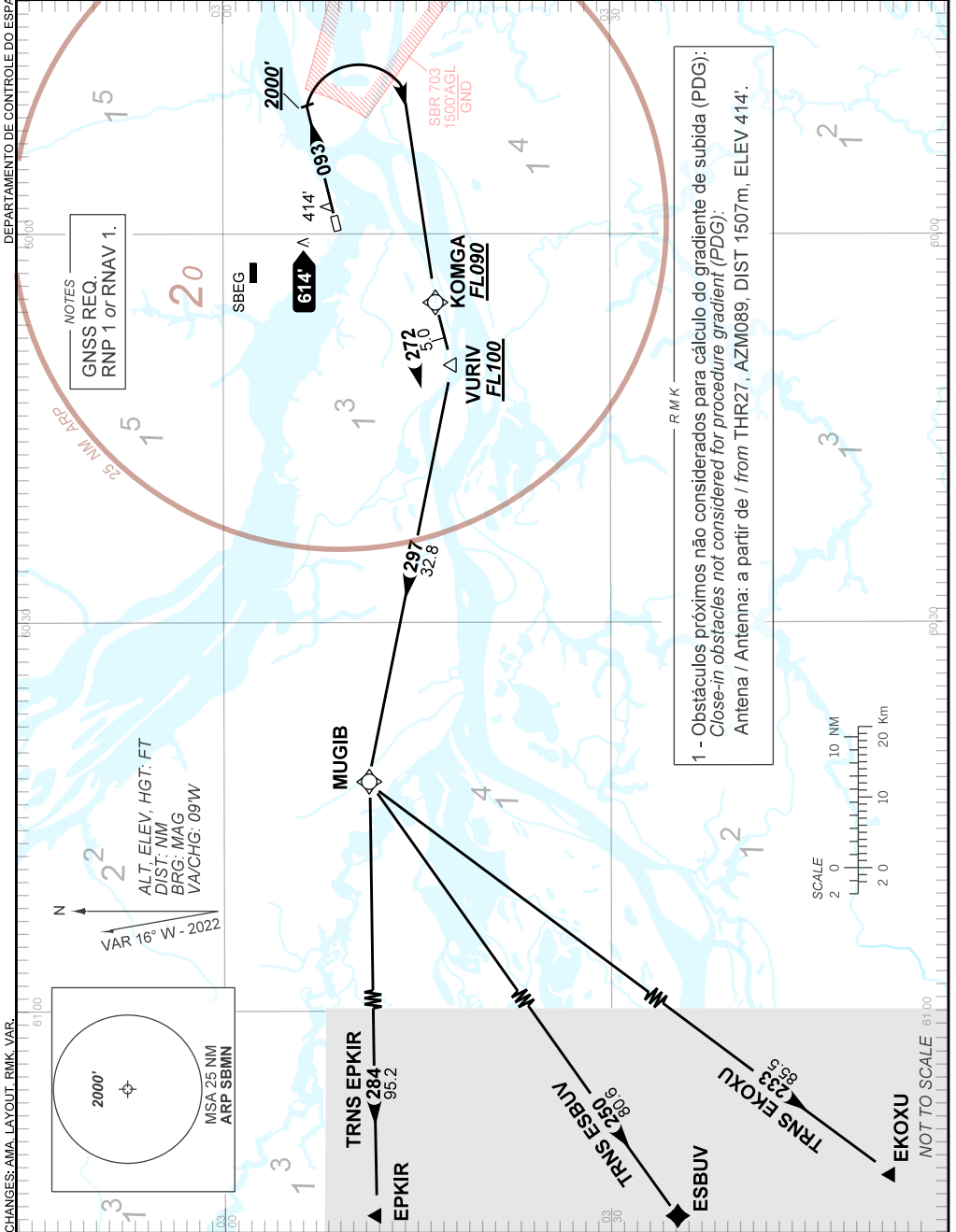
MANAUS / Ponta Pelada, MIL (SBMN)

RWY 09

AD ELEV: 257'

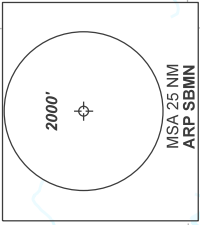
RNAV MUGIB 1A

TA 4000'	ATIS NIL	TWR PONTA PELADA 118.60	APP MANAUS 119.25 119.70 120.40	ACC AMAZÔNICO 134.70 126.10 134.25 127.00 125.40 125.80
----------	----------	-------------------------	---------------------------------	---

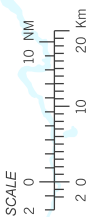


NOTES
GNSS REQ.
RNP 1 or RNAV 1.

ALT. ELEV. HGT. FT
DIST. NM
BRG. MAG
VA/CHG. 09W
VAR 16° W - 2022



1 - Obstáculos próximos não considerados para cálculo do gradiente de subida (PDG):
Close-in obstacles not considered for procedure gradient (PDG):
Antena / Antenna: a partir de / from THR27, AZM089, DIST 1507m, ELEV 414'.



CHANGES: AMA LAYOUT, RMK VAR.

NOT TO SCALE