

**INSTRUMENT APPROACH PATO BRANCO / Regional de Pato Branco - Professor Juvenal Loureiro Cardoso (SBPO)
CHART (IAC)**

AD ELEV: 2700'

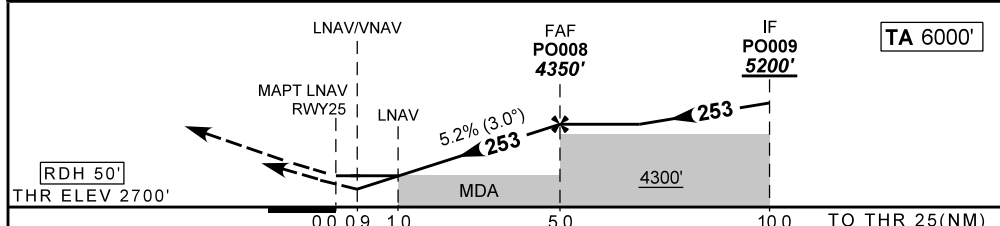
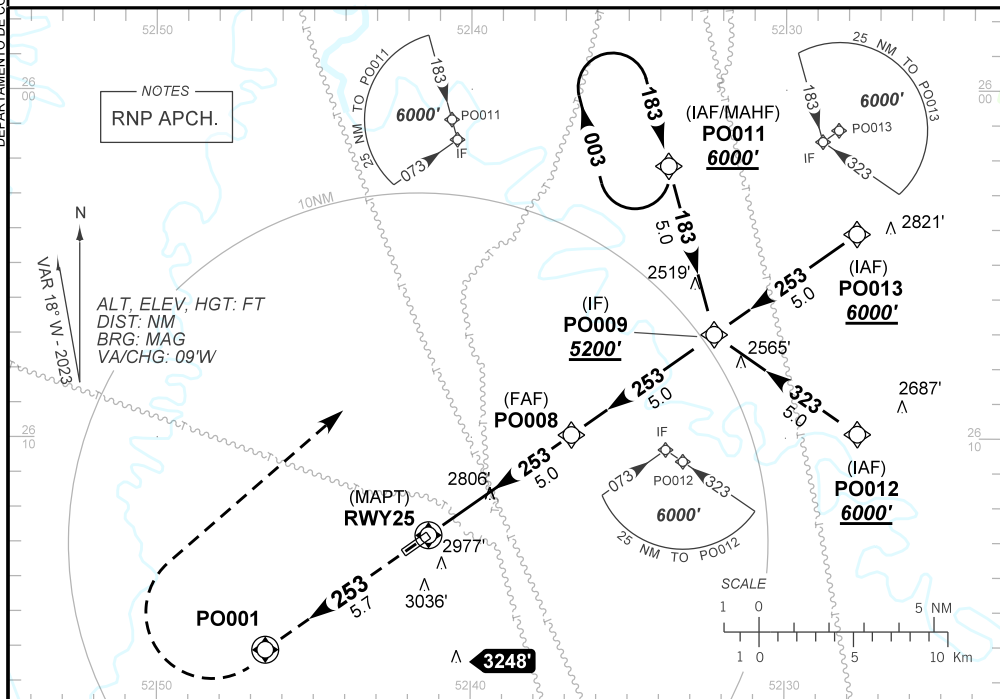
RNP RWY 25

ATIS NIL	APP NIL	AFIS PATO BRANCO 130.80	GNDC NIL
TEMP LNAV/VNAV MIN -10°C / MAX 50°C	FINAL CRS 253°	FAF: 4350'	LNAV/VNAV DA / (OCH): 3039' / (339')
LNAV MDA / (OCH): 3060' / (360')			

APCH Perdida: Subir para **6000'**. Manter rumo **253** até PO001. Após, curvar a DIREITA direto PO011 para espera.

Missed APCH: Climb to **6000'**. Maintain course **253** until PO001. After, turn RIGHT direct PO011 for holding.

DEPARTAMENTO DE CONTROLE DO ESPAÇO AÉREO



RWY25	1.0	2.0	3.0	4.0	PO008	Ground Speed (KT)	090	110	130	150	170	190
ALT	3060	3387	3705	4024	4350	FPM	500	600	700	800	900	NA
(HGT)	360	687	1005	1324	1650	FAF-MAPT	NIL					

STRAIGHT-IN	CAT	A		B	C	D	E
		DA / (OCH)	3039' / (339')				NA
LNAV/VNAV	ALS/NO ALS/ RVR ALS (m)		NIL / 1500 / NIL				
	LNAV	MDA / (OCH)		3060' / (360')			
ALS/NO ALS/ RVR ALS (m)		NIL / 1600 / NIL					
CIRCLING	MDA / (OCH)		NA				
	VIS (m)						

CHANGES: IDENT. PROC. VAR.