

DEPARTURE CHART  
INSTRUMENT (SID)

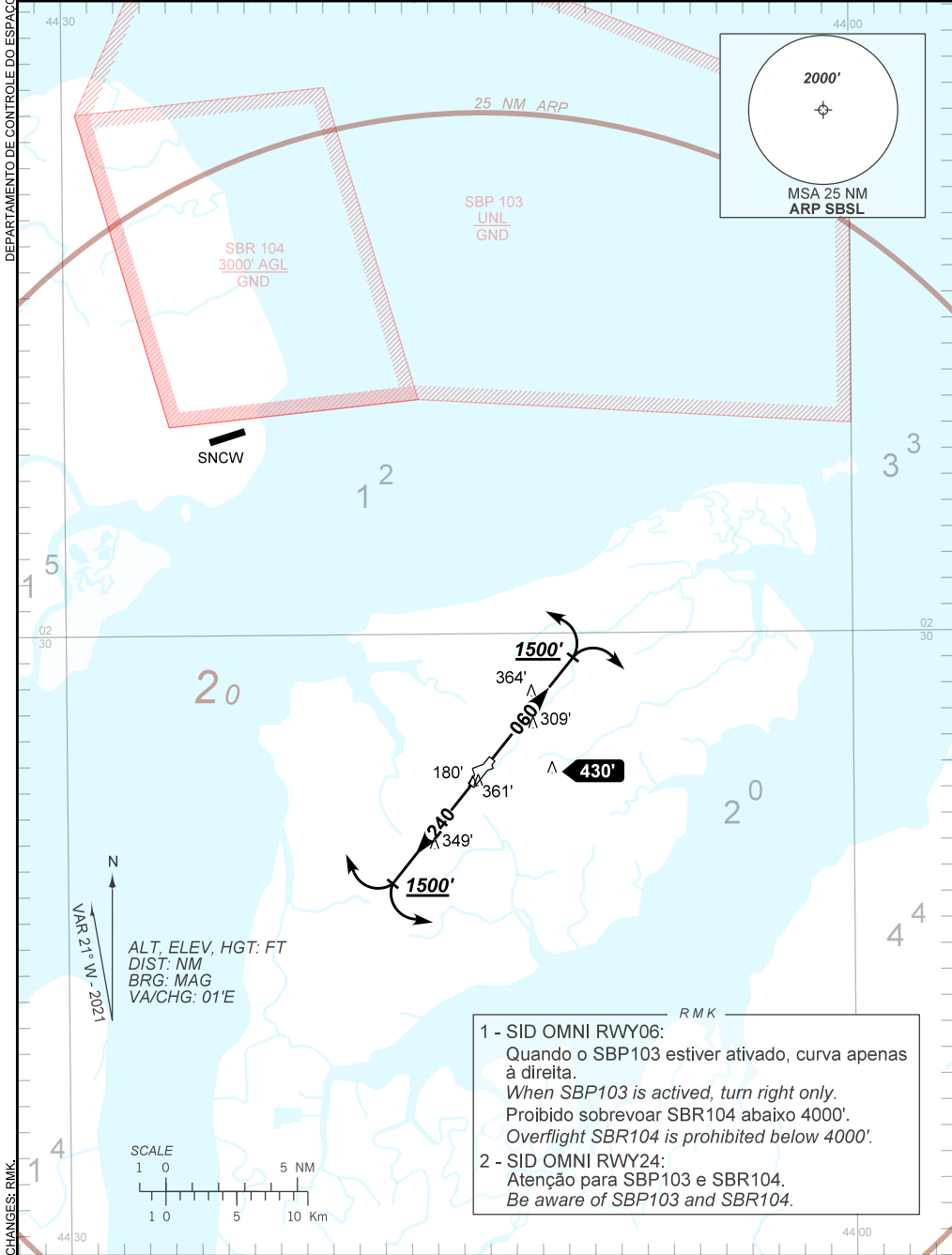
SÃO LUÍS / Marechal Cunha Machado, INTL (SBSL)

RWY 06/24

OMNI

AD ELEV: 177'

TA 4000'	D-ATIS NIL	TWR SÃO LUÍS 118.90	APP SÃO LUÍS 119.10	ACC AMAZÔNICO 125.75 126.65	ACC RECIFE 125.15 135.25
----------	---------------	------------------------	------------------------	--------------------------------	-----------------------------



- 1 - SID OMNI RWY06:  
Quando o SBP103 estiver ativado, curva apenas à direita.  
*When SBP103 is activated, turn right only.*  
Proibido sobrevoar SBR104 abaixo 4000'.  
*Overflight SBR104 is prohibited below 4000'.*
- 2 - SID OMNI RWY24:  
Atenção para SBP103 e SBR104.  
*Be aware of SBP103 and SBR104.*