

**INSTRUMENT APPROACH
CHART (IAC)**

TIRIÓS / Óbidos, MIL (SBTS)

RNP RWY 28

AD ELEV: 1129'

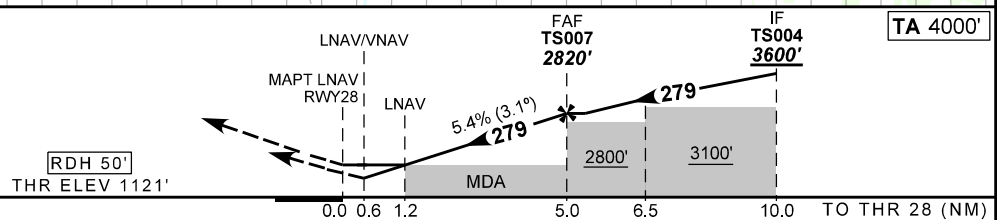
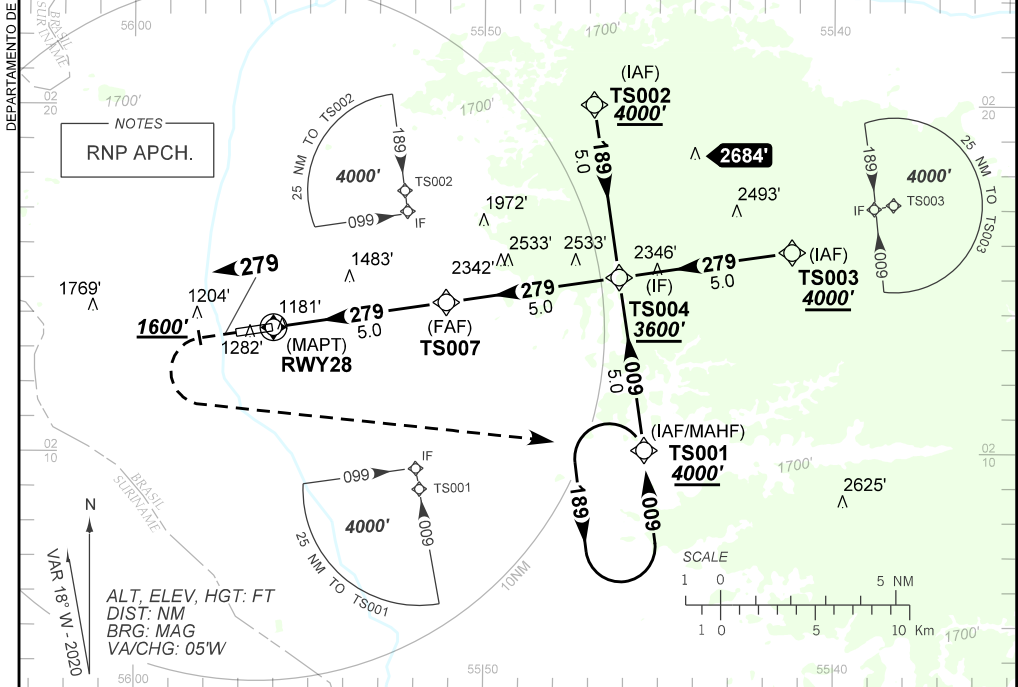
CAT (A,B,C)

ATIS NIL	APP NIL	AFIS TIRIÓS 128.10	GNDC NIL
-------------	------------	-----------------------	-------------

TEMP LNAV/VNAV MIN 0°C / MAX 50°C	FINAL CRS 279°	FAF: 2820'	LNAV/VNAV DA / (OCH): 1371' / (250')	LNAV MDA / (OCH): 1560' / (440')
---	--------------------------	----------------------	--	--

APCH Perdida: 1) Subir para **4000'**. Manter rumo **279°** até **1600'**. Após, curvar à ESQUERDA direto TS001 para espera. 2) IAS MAX 180KT.

Missed APCH: 1) Climb to **4000'**. Maintain course **279°** until **1600'**. After, turn LEFT direct TS001 for holding. 2) IAS MAX 180KT.



RWY28	1.2	2.0	3.0	4.0	TS007	Ground Speed (KT)	090	110	130	150	170	190
ALT	1560	1829	2158	2487	2820	FPM	500	600	700	800	NA	
(HGT)	440	708	1037	1366	1699	FAF-MAPT	NIL					

STRAIGHT-IN	CAT	A	B	C	D	E
	DA / (OCH)	1371' / (250')				
LNAV/VNAV	ALS / NO ALS / RVR ALS (m)	NIL / 1600 / NIL				
	MDA / (OCH)	1560' / (440')				
LNAV	ALS / NO ALS / RVR ALS (m)	NIL / 1600 / NIL		NIL / 2000 / NIL		
	MDA / (OCH)	NA				
CIRCLING	MDA / (OCH)	NA				
	VIS (m)	NA				

CHANGES: PROC.