

**INSTRUMENT APPROACH
CHART (IAC)**

SÃO PAULO / Congonhas (SBSP)

AD ELEV: 2631'

RNP Y RWY 17R

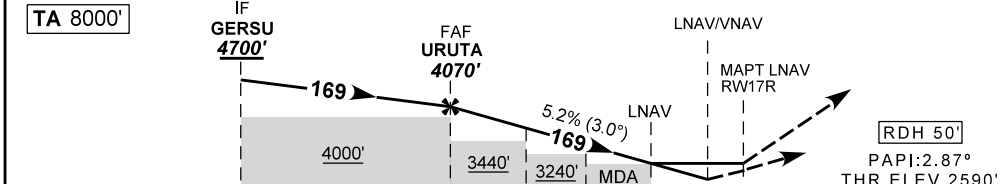
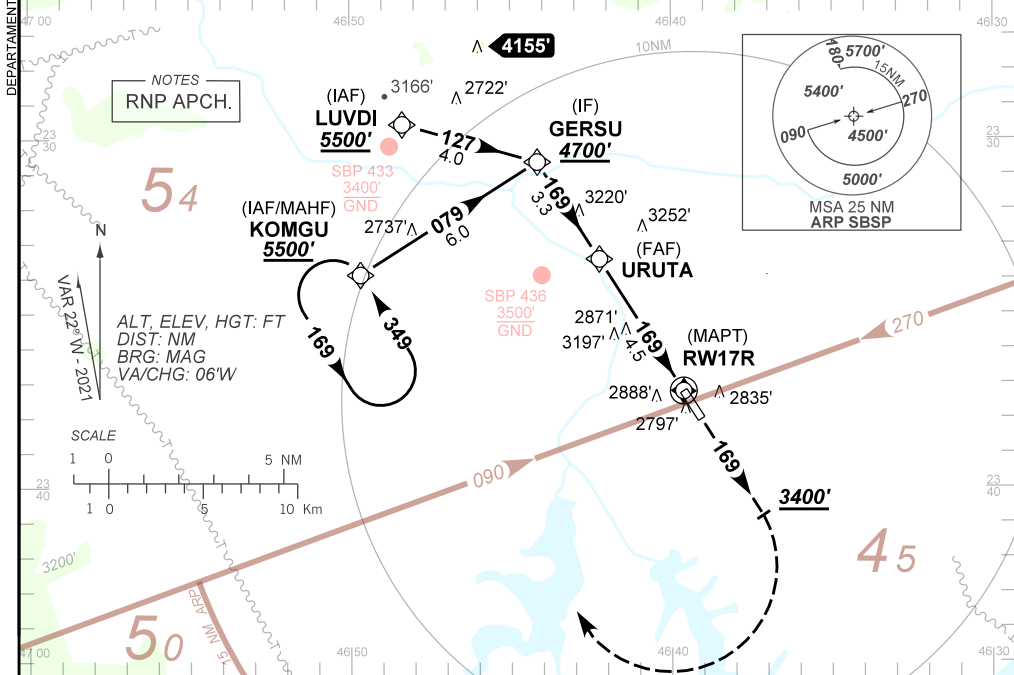
D-ATIS 127.65	APP SÃO PAULO 129.75 119.15 120.45 120.85 133.85	TWR SÃO PAULO 118.05 127.15	GNDC SÃO PAULO 121.90
-------------------------	--	---------------------------------------	---------------------------------

TEMP LNAV/VNAV MIN 0°C / MAX 50°C	FINAL CRS 169°	FAF 4070'	LNAV/VNAV DA / (OCH): 3039' / (450')	LNAV MDA / (OCH): 3100' / (520')
---	--------------------------	---------------------	--	--

APCH Perdida: Subir para **5500'**. Manter proa **169** até cruzar **3400'**. Após, curvar à DIREITA direto KOMGU para espera.

Missed APCH: Climb to **5500'**. Maintain heading **169** until passing **3400'**. Then, Turn RIGHT direct to KOMGU for holding.

RMK: NIL.



TO THR 17R (NM) 7.8 4.5 3.0 2.1 1.4 1.2 0.0

	URUTA	4.0	3.0	2.0	1.2	RWY17R	Ground Speed (KT)	090	110	130	150	170	190
	4070	3913	3595	3276	3039	ALT	FPM	500	600	700	800	900	NA
	1480	1323	1005	686	450	(HGT)	FAF-MAPT	NA					

STRAIGHT-IN	CAT	A	B	C	D	E
LNAV/VNAV	DA / (OCH)	3039' / (450')				NA
	ALSF/NO ALSF/RVR ALSF (m)	1400 / 2100 / NIL				
LNAV	MDA / (OCH)	3100' / (520')				
	ALSF/NO ALSF/RVR ALSF (m)	1400 / 2100 / NIL		1600 / 2400 / NIL		
CIRCLING	MDA / (OCH)	NA				
	VIS (m)					

CHANGES: NEW CHART.

DEPARTAMENTO DE CONTROLE DO ESPAÇO AÉREO