

**INSTRUMENT APPROACH
CHART (IAC)**

PALMAS / Brigadeiro Lysias Rodrigues (SBPJ)

AD ELEV: 774'

RNP Z RWY 14

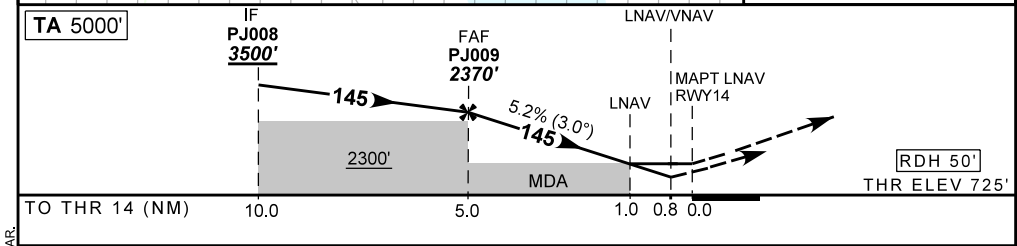
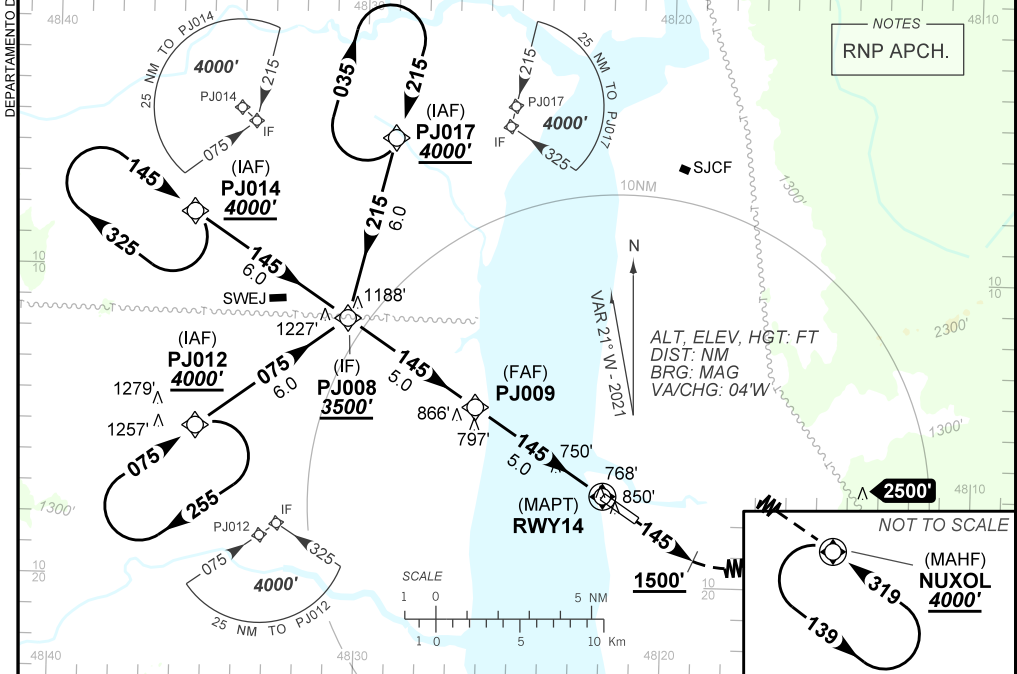
ATIS NIL	APP PALMAS 119.00	TWR PALMAS 118.00	GND C NIL
--------------------	-----------------------------	-----------------------------	---------------------

TEMP LNAV/VNAV MIN 5°C / MAX 45°C	FINAL CRS 145°	FAF: 2370'	LNAV/VNAV DA / (OCH): 1023' / (298')	LNAV MDA / (OCH): 1100' / (380')
---	--------------------------	----------------------	--	--

APCH Perdida: Subir para **4000'**. Manter proa **145** até passar **1500'**. Após, curvar à ESQUERDA direto NUXOL para espera.

Missed APCH: Climb to **4000'**. Maintain heading **145** until passing **1500'**. After, turn LEFT direct to NUXOL for holding.

RMK: NIL.



P/J009	4.0	3.0	2.0	1.0	0.8	RWY 14	Ground Speed (KT)	090	110	130	150	170	190
	2370	2049	1730	1412	1100	1023		ALT	500	600	700	800	900
	1650	1324	1005	687	380	298	(HGT)	FAF-MAPT	NIL				

STRAIGHT-IN	CAT	A	B	C	D	E	
	DA / (OCH)	1023' / (298')					NA
LNAV/VNAV	ALS/NO ALS/ RVR ALS (m)	NIL / 1400 / NIL					
	MDA / (OCH)	1100' / (380')					
LNAV	ALS/NO ALS/ RVR ALS (m)	NIL / 1600 / NIL			NIL / 1700 / NIL		
	CIRCLING	MDA / (OCH)	NA				
	VIS (m)						

DEPARTAMENTO DE CONTROLE DO ESPAÇO AÉREO
CHANGES: DA IDENT, LAYOUT, PROC, VAR.