

**INSTRUMENT APPROACH  
CHART (IAC)**

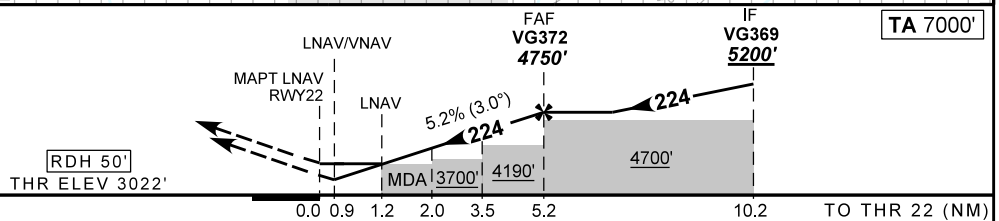
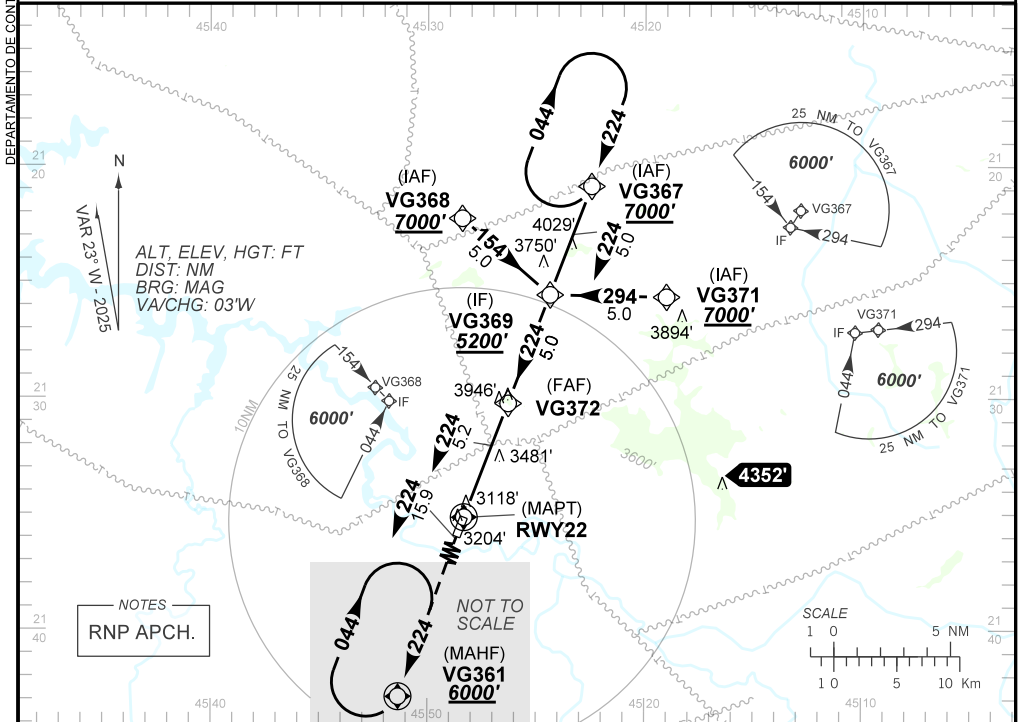
**VARGINHA / Major Brigadeiro Trompowsky (SBVG)**

**AD ELEV: 3025'**

**RNP RWY 22**

ATIS NIL	APP NIL	AFIS VARGINHA 130.80	GNDC NIL
TEMP LNAV/VNAV <b>MIN 0° C/ MAX 50° C</b>	FINAL CRS <b>224°</b>	FAF: <b>4750'</b>	LNAV/VNAV DA / (OCH): <b>3365' / (343')</b>
LNAV MDA / (OCH): <b>3450' / (430')</b>			

APCH Perdida: Subir para **6000'**. Manter rumo **224** até VG361 para espera.  
Missed APCH: Climb to **6000'**. Maintain course **224** until VG361 for holding.



RWY22	1.2	2.0	3.0	3.5	4.0	VG372	Ground Speed (KT)	090	110	130	150	170	190
ALT	3450	3709	4027	4196	4346	4750	FPM	500	600	700	800	900	NA
(HGT)	430	687	1005	1174	1324	1728	FAF-MAPT	NIL					

STRAIGHT-IN	CAT	A	B	C	D	E	
	DA / (OCH)	3365' / (343')					NA
LNAV/VNAV	ALS/NO ALS/ RVR ALS (m)	NIL / 1600 / NIL					
	MDA / (OCH)	3450' / (430')					
LNAV	ALS/NO ALS/ RVR ALS (m)	NIL / 1600 / NIL			NIL / 2000 / NIL		
	MDA / (OCH)	NA					
CIRCLING	MDA / (OCH)	NA					
	VIS (m)	NA					

CHANGES: NIL