

ADC - SBPA: INFORMAÇÕES COMPLEMENTARES / COMPLEMENTARY INFORMATION

CARACTERÍSTICAS FÍSICAS / PHYSICAL CHARACTERISTICS											
PISTA RUNWAY				DIMENSÕES(m) DIMENSIONS(m)				PCN	TIPO DE SUPERFÍCIE SURFACE KIND		
RWY	BRG MAG	Tipo Type	RCD	RWY	SWY	CWY	STRIP	RWY	RWY	SWY	
a	b	c	d	e	f	g	h	i	j	k	
11	109	PA 2	4E	3200x45			3320 x 280	72/F/B/X/T	ASPH		
29	289	NPA	4E								

DISTÂNCIAS DECLARADAS, AUXÍLIOS VISUAIS E COORDENADAS DAS CABECEIRAS DECLARED DISTANCES, VISUAL AIDS AND THRESHOLD COORDINATES							
RWY	TORA(m)	TODA(m)	ASDA(m)	LDA(m)	AUXÍLIOS / AIDS	ALTURA GEOIDAL(m) GEOID HEIGHT(m)	COORDENADAS COORDINATES
11	3200	3200	3200	3200	ALSF - 2 / PAPI	4,57	S29 59 40 W051 10 59
29	3200	3200	3200	3200	PAPI	4,53	S29 59 42 W051 08 59

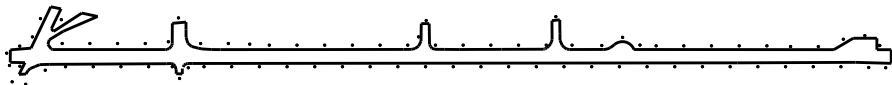
SERVIÇO DE SALVAMENTO E CONTRAINCÊNDIO / RESCUE AND FIRE FIGHTING SERVICE: RFFS REQ - 9

RWY 11/ 29

Sinalização horizontal / Marking Aids



Auxílios luminosos / Lighting Aids



- RMK:** 1) MEHT: PAPI - RWY 29 - 73FT
RWY 11 - 68FT
- 2) TWY F E TWY K PROIBIDO OPS ACFT COM ENVERGADURA ACIMA DE 36M.
TWY F AND TWY K PROHIBITED OPS ACFT WITH WINGSPAN GREATER THAN 36M.

CHANGES: TWY.