

**INSTRUMENT APPROACH
CHART (IAC)**

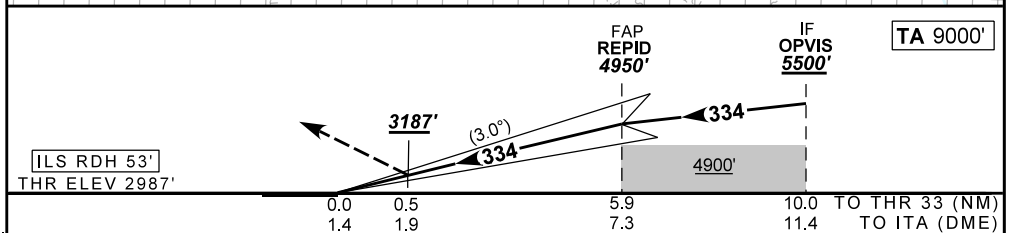
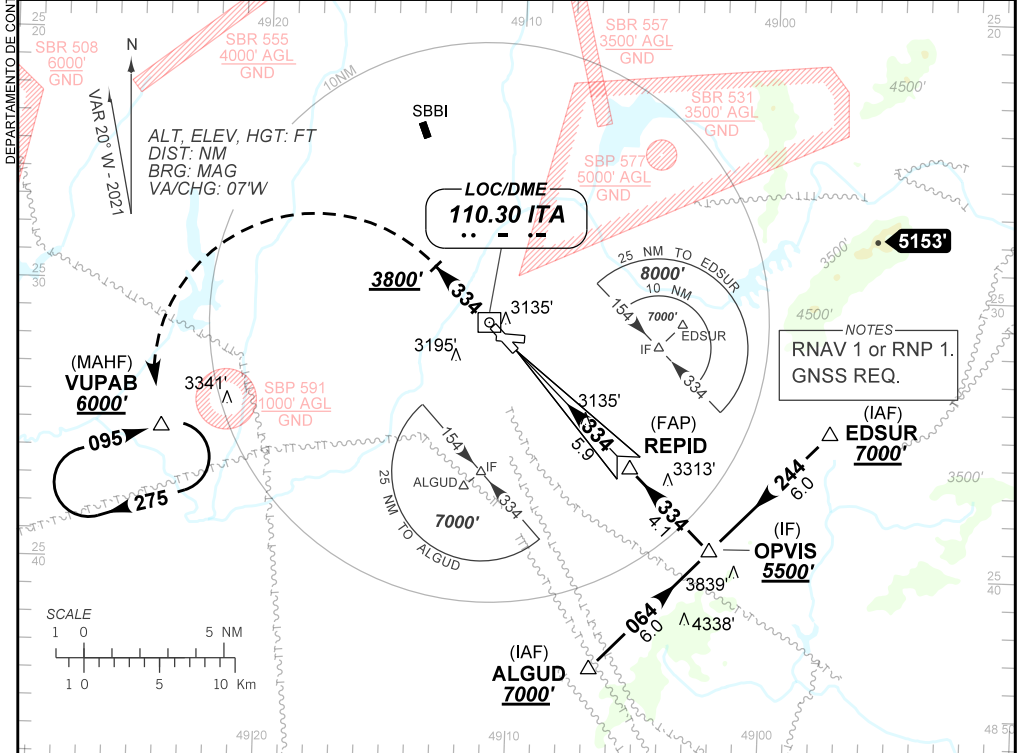
CURITIBA / Afonso Pena, INTL (SBCT)

AD ELEV: 2989'

ILS V RWY 33

D-ATIS 127.80	APP CURITIBA 119.95 119.70 120.65 120.95 129.55 133.15			TWR CURITIBA 118.15	GNDC CURITIBA 121.90
LOC ITA 110.30 MHz	FINAL CRS 334°	FAP: 4950'	CAT I DA / (OCH): 3187' / (200')		N/A

APCH Perdida: Subir para **6000'** proa **334°**. Após **3800'**, curvar ESQUERDA direto VUPAB para espera. IAS MAX 230 KT até VUPAB. Missed APCH: Climb to **6000'** heading **334°**. After **3800'**, turn LEFT direct to VUPAB for holding. MAX IAS 230 KT until VUPAB.



RWY33	NIL	Ground Speed (KT)	090	110	130	150	170	190	
ALT	NIL	FPM	NIL						
(HGT)	NIL	FAF-MAPT	NA						
STRAIGHT-IN	CAT	A	B	C	D	E			
CAT I	DA / (OCH)	3187' / (200')					NA		
	ALS/NO ALS/ RVR ALS (m)	NIL / 1200 / NIL							
CIRCLING	MDA / (OCH)	NA							
	VIS (m)								

CHANGES: LAYOUT, NOTES, TA, VAR.