

**INSTRUMENT APPROACH  
CHART (IAC)**

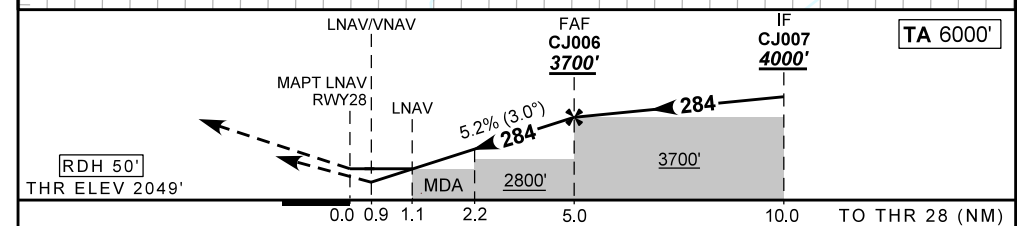
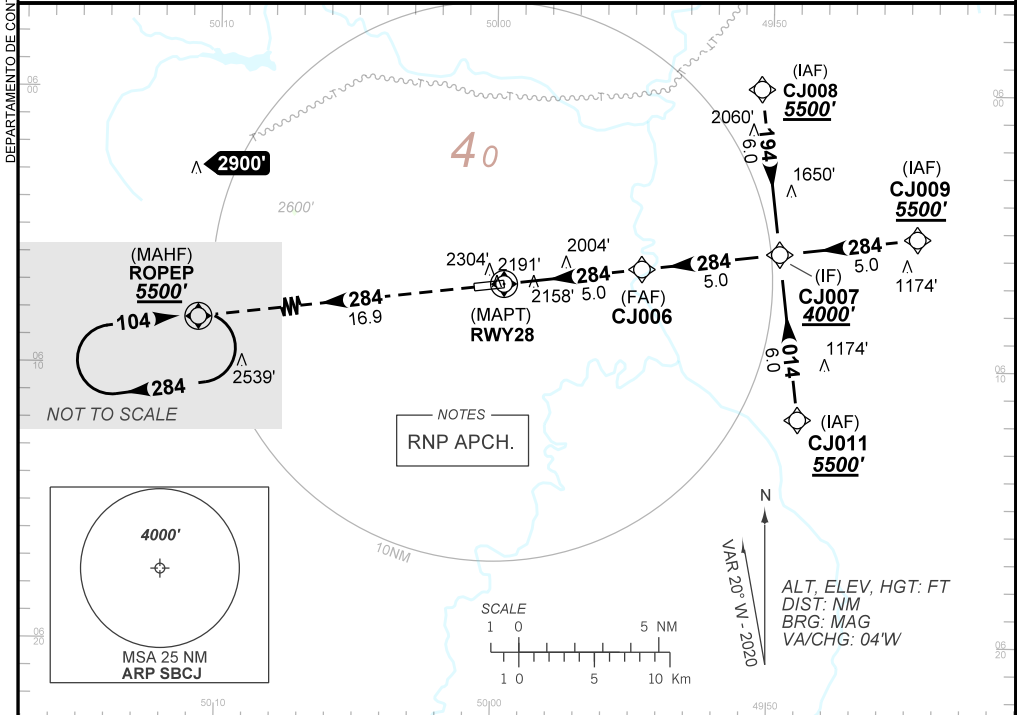
**PARAUPEBAS / Carajás (SBCJ)**

**AD ELEV: 2064'**

**RNP RWY 28**

ATIS NIL	APP NIL	AFIS CARAJÁS 131.70	GND NIL
TEMP LNAV/VNAV MIN 0° / MAX 46°	FINAL CRS 284°	FAF: 3700'	LNAV MDA / (OCH): 2440' / (400')

APCH Perdida: Subir para **5500'**. Manter rumo **284** até ROPEP para espera.  
Missed APCH: Climb to **5500'**. Maintain course **284** until ROPEP for holding.



RWY28	0.9	1.1	2.2	3.0	4.0	CJ006	Ground Speed (KT)	090	110	130	150	170	190
ALT	2371	2440	2800	3054	3373	3700	FPM	500	600	700	800	900	NA
(HGT)	322	391	751	1005	1324	1651	FAF-MAPT	NA					

STRAIGHT-IN	CAT	A	B	C	D	E	
	DA / (OCH)	2371' / (322')					NA
LNAV/VNAV	ALS/NO ALS/ RVR ALS (m)	NIL / 1500 / 1400					
	MDA / OCH	2440' / (400')					
LNAV	ALS/NO ALS/ RVR ALS (m)	NIL / 1800 / 1700					
	MDA / (OCH)	NA					
CIRCLING	VIS (m)	NA					