

**INSTRUMENT APPROACH  
CHART (IAC)**

**RIO DE JANEIRO / Santos Dumont (SBRJ)  
RNP W RWY 02R (AR)**

**AD ELEV: 10'**

CAT (A,B,C)

D-ATIS <b>132.65</b>	APP RIO <b>133.30 124.95 134.95 126.20 129.80 128.90 119.35 125.95 134.40 121.25</b>	TWR RIO <b>118.70</b>	GNDC RIO <b>121.70</b>
-------------------------	---	--------------------------	---------------------------

TEMP LNAV/VNAV <b>MIN 10°C / MAX 45°C</b>	FINAL CRS <b>020°</b>	FAF: <b>1540'</b>	RNP 0.1 DA / (OCH): <b>305' / (296')</b>	<b>N/A</b>
--	--------------------------	----------------------	---	------------

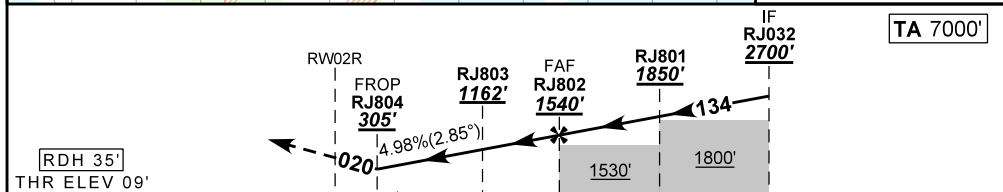
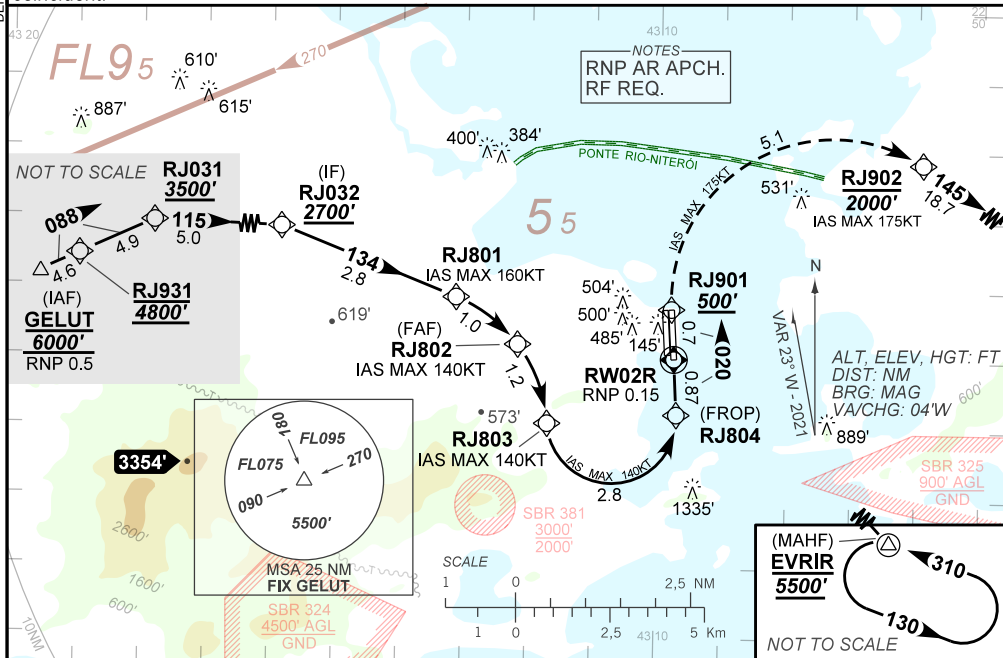
APCH Perdida: 1) Subir para **5500'**. Manter rumo **020** até RJ901. Após, curvar à DIREITA até RJ902. Após, manter rumo **145** até EVRIR para espera. 2) RNP menor que 1.0 de RW02R até RJ902.

Missed APCH: 1) Climb to **5500'**. Maintain course **020** until RJ901. After, turn RIGHT to RJ902. After, maintain course **145** until EVRIR for holding. 2) RNP below 1.0 from RW02R until RJ902.

RMK: 1) Não efetuar transição para RNP da aproximação perdida antes de 0.87NM de RWY02R. 2) Trajetória vertical e PAPI não coincidentes.

1) Do not perform RNP transition of Missed APCH before 0.87NM from RWY02R. 2) Vertical path and PAPI not coincident.

DEPARTAMENTO DE CONTROLE DO ESPAÇO AEREO



RW02R	RJ804	1.0	2.0	3.0	4.0	RJ802	Ground Speed (KT)	090	110	130	150	170	190
ALT	305	346	649	951	1254	1540	FPM	500	600	700	800	NA	
(HGT)	296	337	640	942	1245	1531	FAF-MAPT	NIL					

STRAIGHT-IN	CAT	A	B	C	D	E
RNP 0.1	DA / (OCH)	305' / (296')			NA	
	ALS/NO ALS/ RVR ALS (m)	NIL / 1600 / NIL				

**AUTORIZAÇÃO ESPECIAL PARA AERONAVE E TRIPULAÇÃO REQUERIDA  
SPECIAL AUTHORIZATION FOR AIRCRAFT AND CREW REQUIRED**

CHANGES: MISSED APCH