

**INSTRUMENT APPROACH  
CHART (IAC)**

**BAURU / Bauru - Arealva (SBAE)**

**AD ELEV: 1961'**

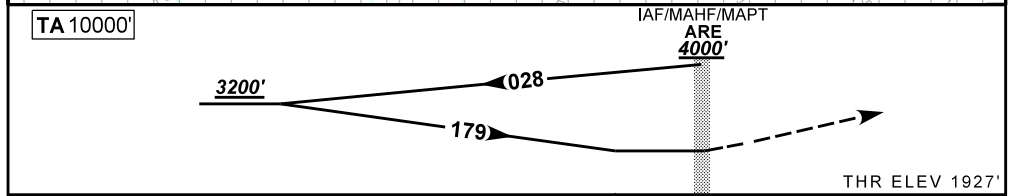
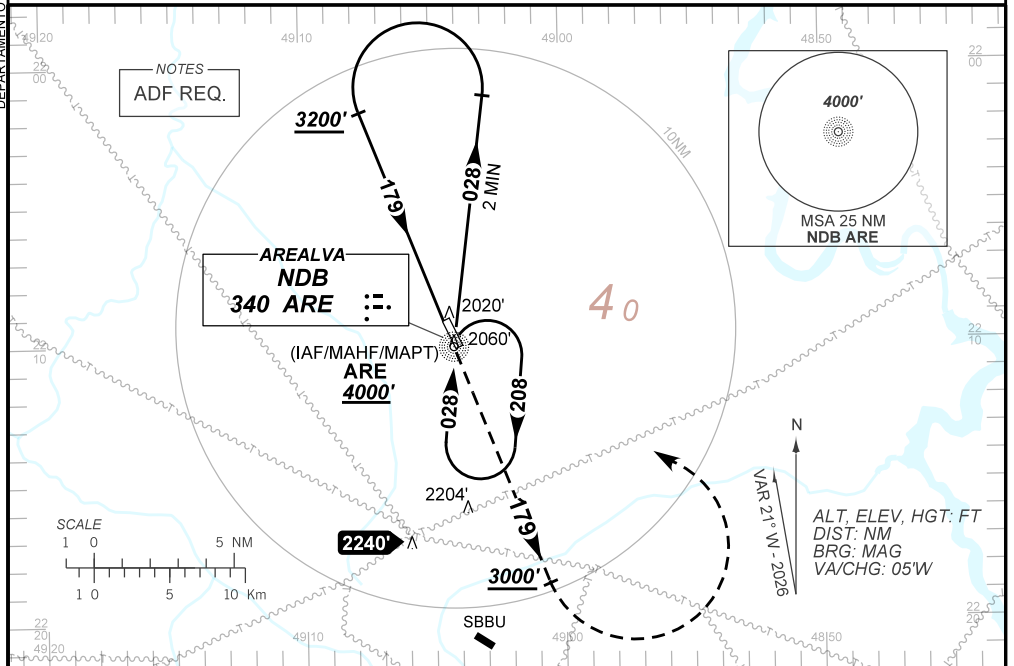
**NDB RWY 17**

|                    |                     |                        |   |
|--------------------|---------------------|------------------------|---|
| ATIS<br>NIL        | APP BAURU<br>121.30 | AFIS AREALVA<br>126.60 | GNDC<br>NIL                               |
| NDB ARE<br>340 KHz | FINAL CRS<br>179°   | N/A                    | NDB<br>MDA / (OCH): <b>2420' / (500')</b> |

APCH Perdida: Subir para **4000'**. Manter a proa **179** até **3000'**. Após, curvar à ESQUERDA direto NDB ARE para espera. 2) IAS MAX 230 KT.

Missed APCH: Climb to **4000'**. Maintain heading **179** until **3000'**. After, turn LEFT direct ARE NDB for holding. 2) IAS MAX 230 KT.

DEPARTAMENTO DE CONTROLE DO ESPAÇO AÉREO



|             |                         |                  |                   |     |                  |     |     |     |     |
|-------------|-------------------------|------------------|-------------------|-----|------------------|-----|-----|-----|-----|
| NIL         |                         | RWY 17           | Ground Speed (KT) | 090 | 110              | 130 | 150 | 170 | 190 |
| NIL         |                         | ALT              | FPM               | 650 |                  |     |     |     |     |
| NIL         |                         | (HGT)            | FAF-MAPT          | NA  |                  |     |     |     |     |
| STRAIGHT-IN | CAT                     | A                | B                 | C   | D                | E   |     |     |     |
| NDB         | MDA / (OCH)             | 2420' / (500')   |                   |     |                  |     |     |     |     |
|             | ALS/NO ALS/ RVR ALS (m) | NIL / 1600 / NIL |                   |     | NIL / 2300 / NIL |     |     |     |     |
| CIRCLING    | MDA / (OCH)             | NA               |                   |     |                  |     |     |     |     |
|             | VIS (m)                 |                  |                   |     |                  |     |     |     |     |

CHANGES: TA, VAR.