

**INSTRUMENT APPROACH  
CHART (IAC)**

**TERESINA / Senador Petrônio Portella (SBTE)**

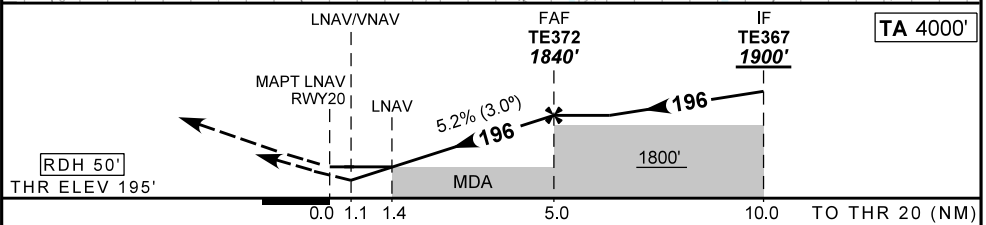
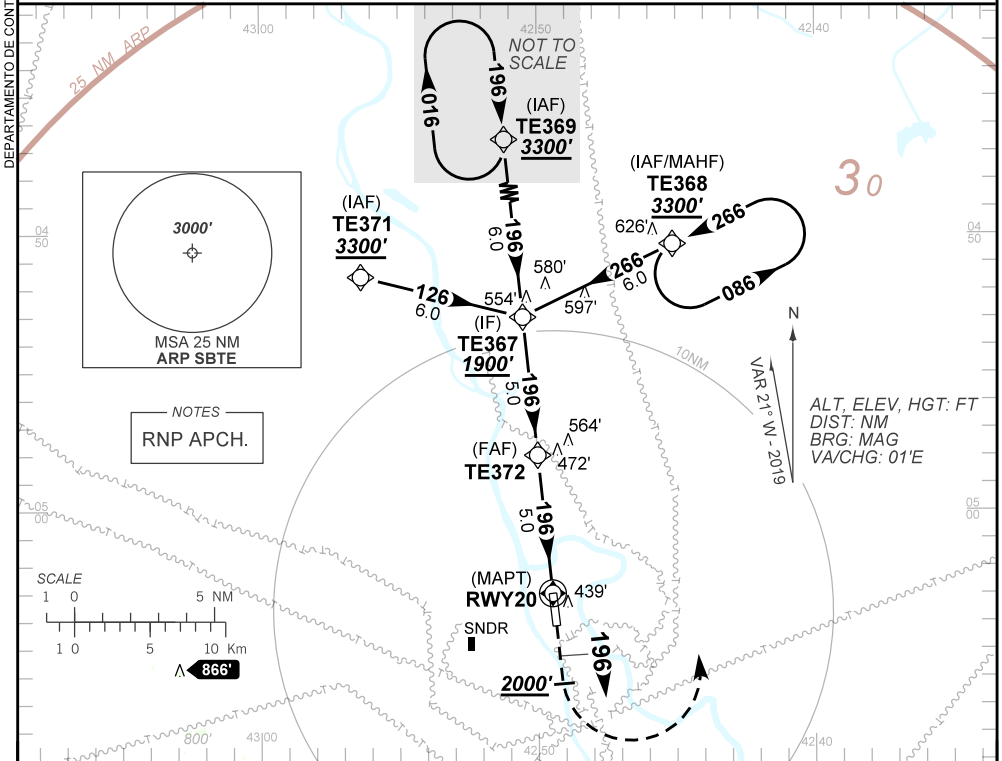
**RNP RWY 20**

**AD ELEV: 220'**

ATIS <b>127.80</b>	APP TERESINA <b>119.60</b>	TWR TERESINA <b>118.80</b>	GNDC <b>NIL</b>
TEMP LNAV/VNAV <b>MIN 0°C / MAX 48°C</b>	FINAL CRS <b>196°</b>	FAF: <b>1840'</b>	LNAV/VNAV DA / (OCH): <b>605' / (410')</b>
		LNAV MDA / (OCH): <b>700' / (510')</b>	

APCH Perdida: Subir para **3300'**. Após **2000'**, curvar à ESQUERDA direto TE368 para espera.

Missed APCH: Climb to **3300'**. After **2000'**, turn LEFT direct TE368 for holding.



RWY20	1.4	2.0	3.0	4.0	TE372		Ground Speed (KT)	090	110	130	150	170	190
ALT	700	880	1200	1520	1840		FPM	500	600	700	800	900	NA
(HGT)	510	685	1005	1325	1645		FAF-MAPT	NA					

STRAIGHT-IN	CAT	A	B	C	D	E
LNAV/VNAV	DA / OCH	605' / (410')				NA
	ALS/NO ALS/ RVR ALS (m)	NIL / 1900 / NIL				
LNAV	MDA / OCH	700' / (510')				
	ALS/NO ALS/RVR ALS (m)	NIL / 1900 / NIL		NIL / 2400 / NIL		
CIRCLING	MDA / OCH	NA				
	VIS (m)	NA				