

**INSTRUMENT APPROACH
CHART (IAC)**

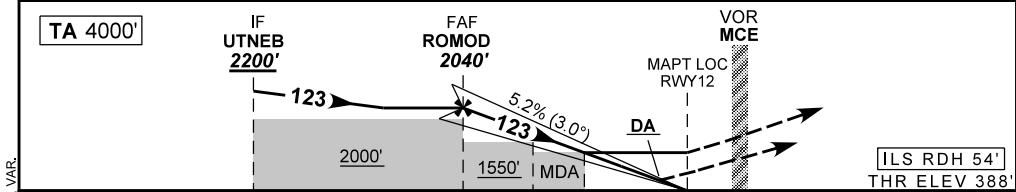
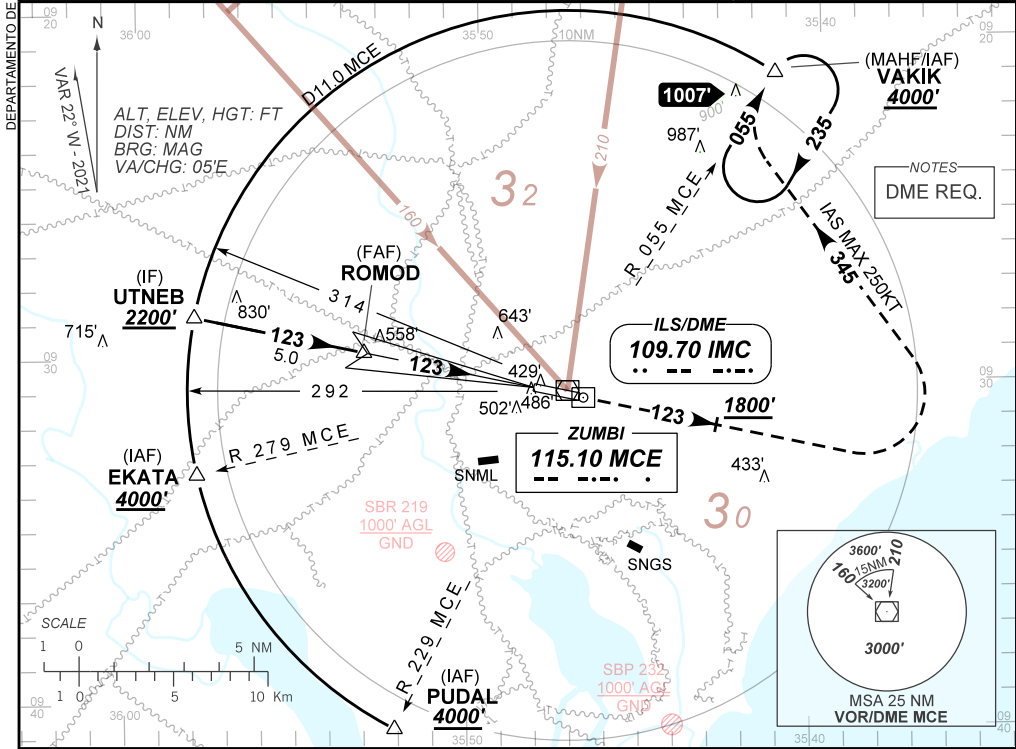
MACEIÓ / Zumbi dos Palmares, INTL (SBMO)

AD ELEV: 388'

ILS Z or LOC Z RWY 12

D-ATIS NIL	APP MACEIÓ 119.25 128.90	TWR MACEIÓ 118.00 118.25	GNDC NIL
LOC IMC 109.70 MHz	FINAL CRS 123°	FAF: 2040'	CAT I DA / (OCH): REFER TO MNM
LOC MDA / (OCH): 750' / (370')			

APCH Perdida: 1) Subir para **4000'**. Manter rumo **123** até **1800'**. Após, curvar à ESQUERDA, proa **345** para interceptar RDL **055** do VOR MCE até VAKIK para espera.
 Missed APCH: 1) Climb to **4000'**. Maintain course **123** until **1800'**. After, turn LEFT, heading **345** to intercept **055** RDL MCE VOR to VAKIK for holding.



TO THR 12 (NM)	10.0	5.0	3.5	1.0	0.0
TO IMC (DME)	11.0	6.0	4.5	2.0	1.0

ROMOD	4.0	3.5	3.0	2.0	1.0	RWY12	Ground Speed (KT)	090	110	130	150	170	190
2040	1716	1557	1397	1079	750	ALT	FPM	500	600	700	800	900	1000
1652	1328	1169	1009	691	370	(HGT)	FAF-MAPT	NIL					

STRAIGHT-IN	CAT	A	B	C	D	E
CAT I	DA / (OCH)	588' / (200')				620' / (232')
	ALS/NO ALS/ RVR ALS (m)	NIL / 1200 / NIL				
LOC	MDA / (OCH)	750' / (370')				
	ALS/NO ALS/ RVR ALS (m)	NIL / 1600 / NIL		NIL / 1700 / NIL		

DEPARTAMENTO DE CONTROLE DO ESPAÇO AEREO

CHANGES: FREQ. LAYOUT. MSA. PROC. VAR.