

**INSTRUMENT APPROACH
CHART (IAC)**

**MACAÉ / Macaé (SBME)
VOR RWY 24
(CAT A, B, C)**

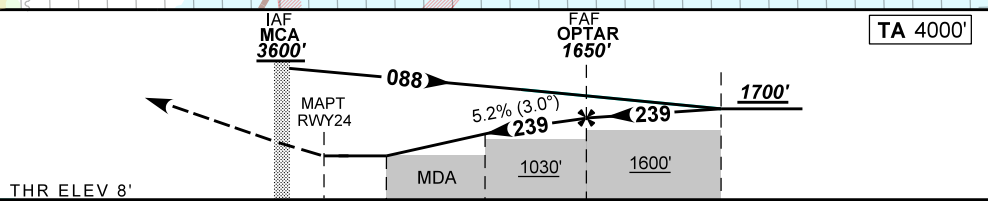
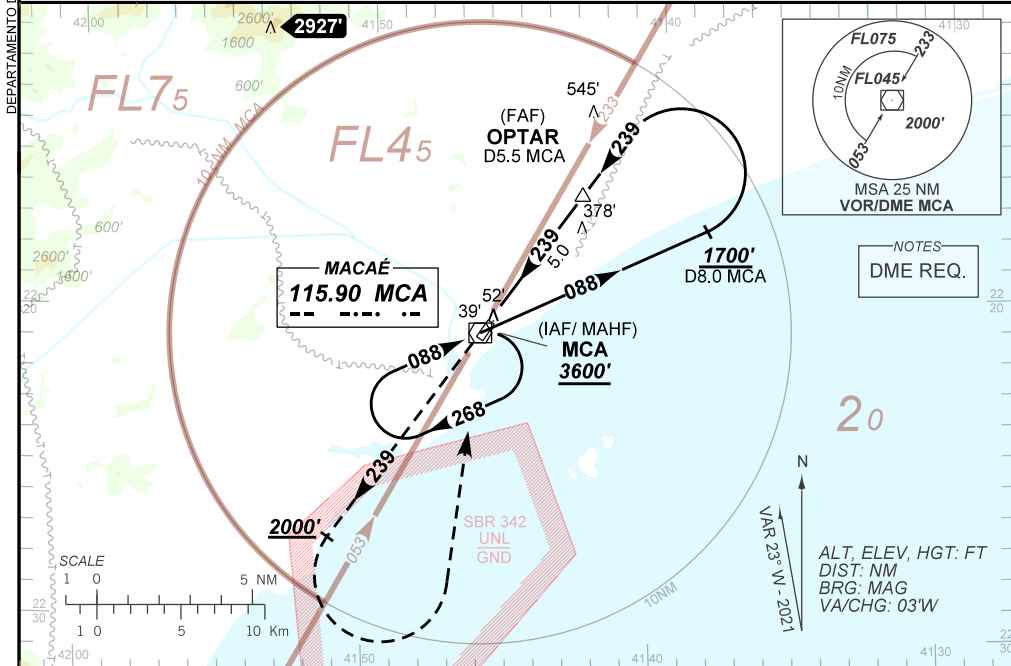
AD ELEV: 8'

ATIS 127.775	APP MACAÉ 119.20 120.00 126.90 128.95 129.30 129.55 130.30 130.85 131.98			TWR MACAÉ 118.45	AFIS MACAÉ 119.20
VOR MCA 115.90 MHz	FINAL CRS 239°	FAF: 1650'	N/A	VOR MDA / (OCH): 520' / (520')	

APCH Perdida: Subir para **3600'**. Manter a RDL **239** do VOR MCA até **2000'**. Após, curvar a ESQUERDA direto VOR MCA para espera.

Missed APCH: Climb to **3600'**. Maintain **239** RDL MCA VOR until **2000'**. After, turn LEFT direct MCA VOR for holding.

RMK: NIL.



0.0	1.5	3.0	5.0	7.5	TO THR 24 (NM) TO MCA (DME)
0.5	2.0	3.5	5.5	8.0	

RWY24	1.5	2.0	3.0	4.0	OPTAR	Ground Speed (KT)	090	110	130	150	170	190
ALT	520	695	1013	1332	1650	FPM	500	600	700	800	900	NA
(HGT)	520	687	1005	1324	1642	FAF-MAPT	NA					

STRAIGHT-IN	CAT	A	B	C	D	E
	MDA / (OCH)	520' / (520')				
VOR	ALS/NO ALS/ RVR ALS (m)	NIL / 1600 / NIL			NIL / 2400 / NIL	
		NA				
CIRCLING	MDA / (OCH)	NA				
	VIS (m)	NA				

CHANGES: DIST. MINM.