

**INSTRUMENT APPROACH
CHART (IAC)**

SÃO JOSÉ DOS CAMPOS / Professor Urbano Ernesto Stumpf (SBSJ)

AD ELEV: 2123'

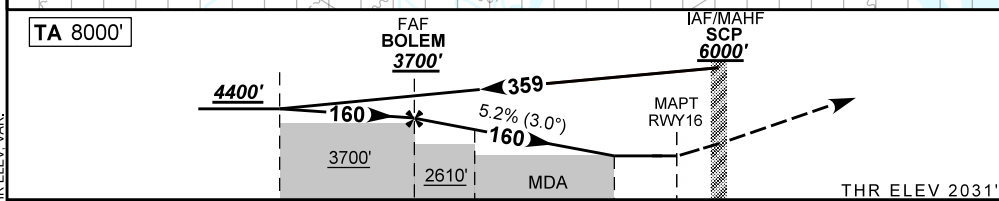
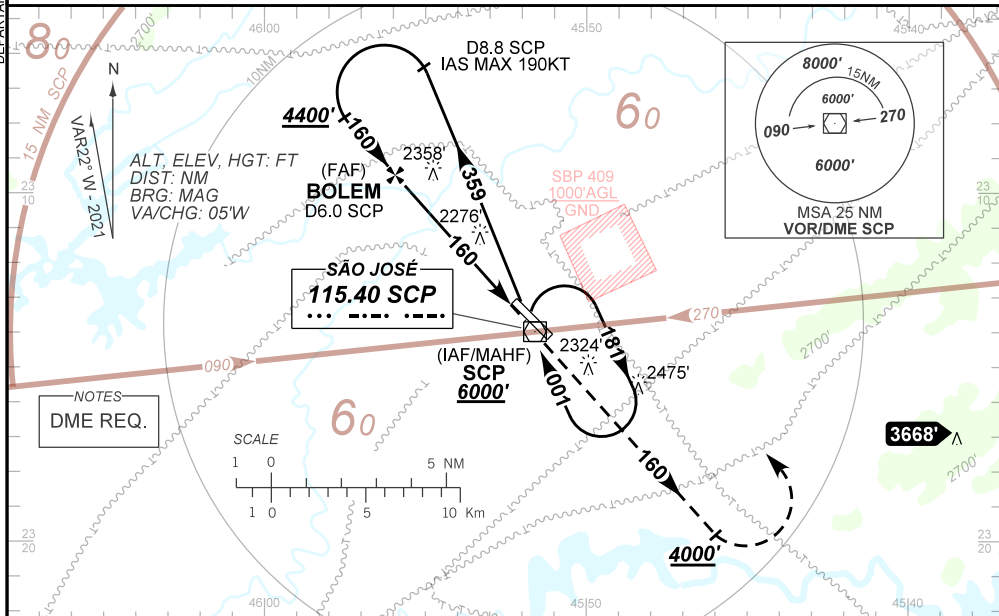
**USO EXCLUSIVO ACFT MILITARES
MILITARY ACFT ONLY**

VOR Y RWY 16

D-ATIS 127.925	APP SÃO PAULO 124.15 134.15 134.90 129.00	APP RIO 121.35 123.90 124.70 125.60	TWR SÃO JOSÉ 118.50	GNDC SÃO JOSÉ 121.95 122.50
VOR SCP 115.40 MHz	FINAL CRS 160°	FAF: 3700'	N/A	VOR MDA / (OCH): 2540' / (510')

APCH Perdida: Subir para **6000'**. Manter proa **160** até cruzar **4000'**. Após, curvar à **ESQUERDA** até o VOR SCP para espera.
 Missed APCH: Climb to **6000'**. Maintain heading **160** until passing **4000'**. After, turn **LEFT** until SCP VOR for holding.

RMK: NIL.



TO THR 16 (NM)	7.8	5.0	3.1	1.4	0.0
TO SCP (DME)	8.8	6.0	4.1	2.4	1.0

BOLEM	4.0	3.1	2.0	1.4	RWY16		
3700	3355	3080	2719	2540	ALT		
1669	1324	1048	687	510	(HGT)		
Ground Speed (KT)		090	110	130	150	170	190
FPM		500	600	700	800	900	1000
FAF-MAPT		NA					

STRAIGHT-IN	CAT	A	B	C	D	E
	MDA / (OCH)	2540' / (510')				
VOR	ALS/NO ALS/ RVR ALS (m)	1200 / 1600 / NIL		1900 / 2400 / NIL		
CIRCLING	MDA / (OCH)	NA				
	VIS (m)					

AIRAC AMDT 2107A1 15 JUL 21

SBSJ_IAC_00B 1/1
IAC VOR Y RWY 16

USO EXCLUSIVO ACFT MILITARES / MILITARY ACFT ONLY

DEPARTAMENTO DE CONTROLE DO ESPAÇO AEREO
CHANGES: ALT, HGT, LAYOUT, NOTES, OBST, THR ELEV, VAR.