

**INSTRUMENT APPROACH CHART (IAC)**

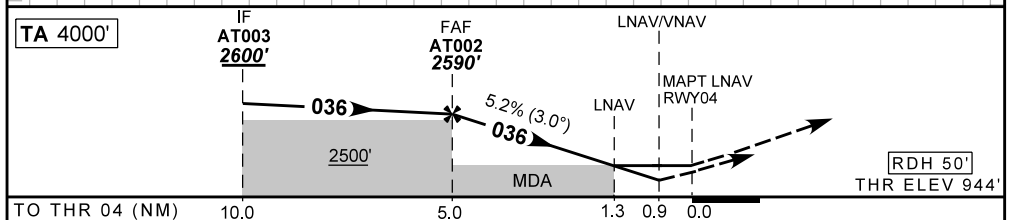
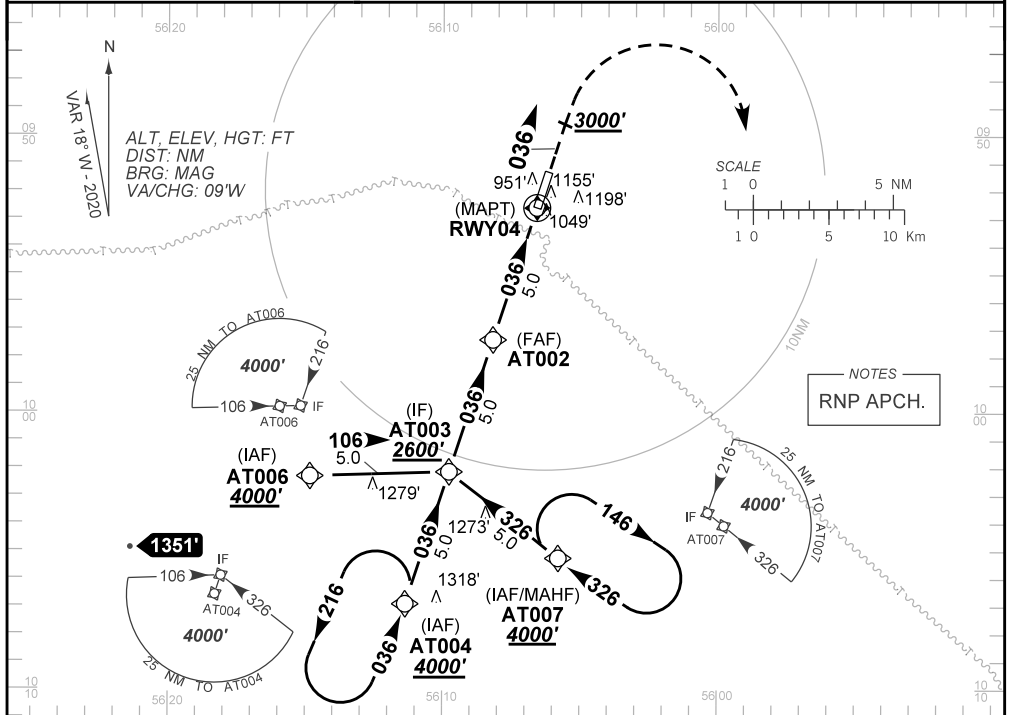
**ALTA FLORESTA / Aeroporto Piloto Osvaldo Marques Dias (SBAT)**

**AD ELEV: 948'**

**RNP RWY 04**

ATIS <b>NIL</b>	APP <b>NIL</b>	AFIS FLORESTA <b>126.60</b>	GNDC <b>NIL</b>
TEMP LNAV/VNAV <b>MIN 00°C / MAX 50°C</b>	FINAL CRS <b>036°</b>	FAF: <b>2590'</b>	LNNAV/VNAV <b>DA / (OCH): 1272' / (328')</b>
		LNNAV <b>MDA / (OCH): 1410' / (470')</b>	

APCH Perdida: Subir para **4000'**. Manter rumo **036** até **3000'**. Após, curvar à DIREITA direto AT007 para espera.  
Missed APCH: Climb to **4000'**. Maintain course **036** until **3000'**. Then, turn RIGHT direct AT007 for holding.



	AT002	4.0	3.0	2.0	1.3	RWY04	Ground Speed (KT)	090	110	130	150	170	190
	2590	2268	1949	1631	1410	ALT	FPM	500	600	700	800	900	NA
	1642	1324	1005	687	470	(HGT)	FAF-MAPT	NIL					

STRAIGHT-IN	CAT	A	B	C	D	E
	DA / (OCH)	1272' / (328')				NA
LNNAV/VNAV	ALS/NO ALS/ RVR ALS (m)	NIL / 1500 / NIL				NA
	MDA / (OCH)	1410' / (470')				NA
LNNAV	ALS/NO ALS/ RVR ALS (m)	NIL / 1600 / NIL		NIL / 2200 / NIL		NA
	MDA / (OCH)	NA				NA
CIRCLING	MDA / (OCH)	NA				NA
	VIS (m)	NA				NA

CHANGES: IDENT LAYOUT.