

**INSTRUMENT APPROACH
CHART (IAC)**

TEFÉ / Prefeito Orlando Marinho (SBTF)

RNP Y RWY 33

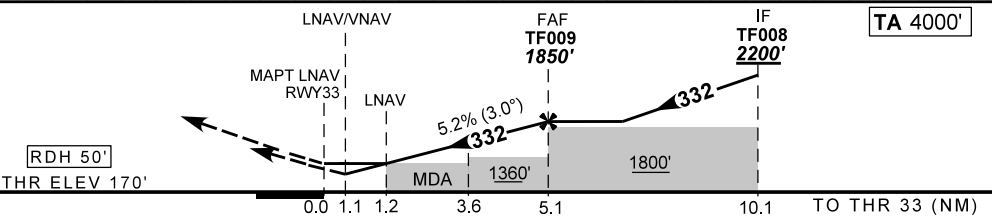
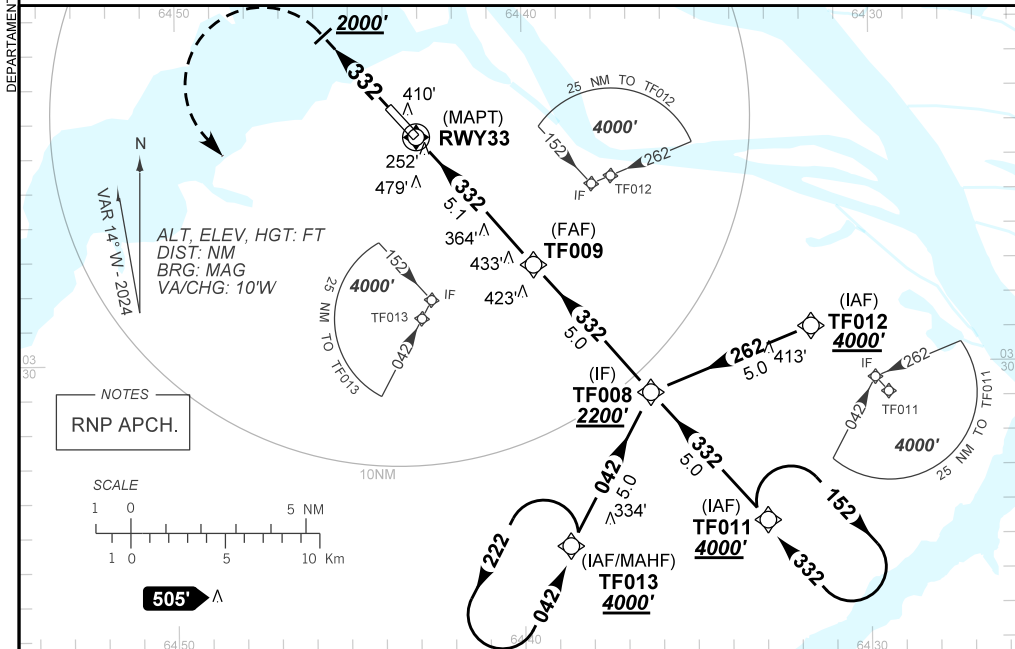
(CAT A, B, C)

AD ELEV: 187'

ATIS NIL	APP NIL	AFIS TEFÉ 125.60	GNDC NIL
TEMP LNAV/VNAV MIN 0°C / MAX 50°C	FINAL CRS 332°	FAF: 1850'	LNAV/VNAV DA / (OCH): 566' / (396')
		LNAV MDA / (OCH): 600' / (430')	

APCH Perdida: Subir para **4000'**. Manter rumo **332** até passar **2000'**. Após, curvar à ESQUERDA direto TF013 para espera.

Missed APCH: Climb to **4000'**. Maintain course **332** until **2000'**. After, turn LEFT direct TF013 for holding.



RWY33	1.2	2.0	3.0	3.6	4.0	TF009	Ground Speed (KT)	090	110	130	150	170	190
ALT	600	857	1175	1360	1494	1850	FPM	500	600	700	800	NA	NA
(HGT)	430	687	1005	1190	1324	1680	FAF-MAPT	NA					

STRAIGHT-IN	CAT	A	B	C	D	E
	DA / (OCH)	566' / (396')			NA	
LNAV/VNAV	ALS/NO ALS/ RVR ALS (m)	NIL / 1800 / NIL			NA	
	MDA / (OCH)	600' / (430')			NA	
LNAV	ALS/NO ALS/ RVR ALS (m)	NIL / 1800 / NIL		NIL / 2000 / NIL		
	MDA / (OCH)	NA				
CIRCLING	MDA / (OCH)	NA				
	VIS (m)	NA				

CHANGES: DA, DIST, VIS.