

**INSTRUMENT APPROACH  
CHART (IAC)**

**SÃO JOSÉ DOS CAMPOS / Prof. Urbano Ernesto Stumpf (SBSJ)**

**AD ELEV: 2123'**

**ILS V or LOC V RWY 16**

D-ATIS <b>127.925</b>	APP SÃO PAULO <b>124.15 129.00</b> <b>134.15 134.90</b>	APP RIO <b>121.35 123.90</b> <b>125.60 124.70</b>	TWR SÃO JOSÉ <b>118.50</b>	GNDC SÃO JOSÉ <b>121.95</b>
--------------------------	---	---	-------------------------------	--------------------------------

LOC/ISJ <b>110.30 MHz</b>	FINAL CRS <b>157°</b>	FAF: <b>3680'</b>	CAT I DA / (OCH): <b>REFER TO MNM</b>	LOC MDA / (OCH): <b>2560' / (530')</b>
------------------------------	--------------------------	----------------------	--	---

APCH Perdida: Subir para **6000'** na proa **157'**, com gradiente mínimo de 4%. Após **3100'**, interceptar a RDL **157'** VOR SCP até TESIX para espera.

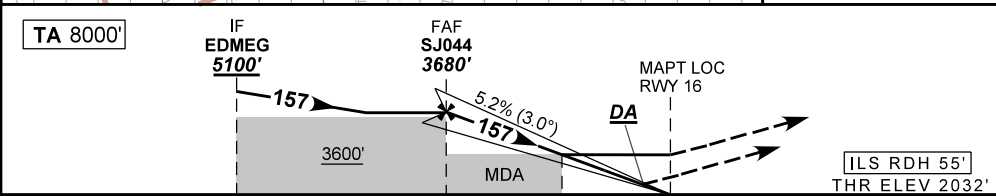
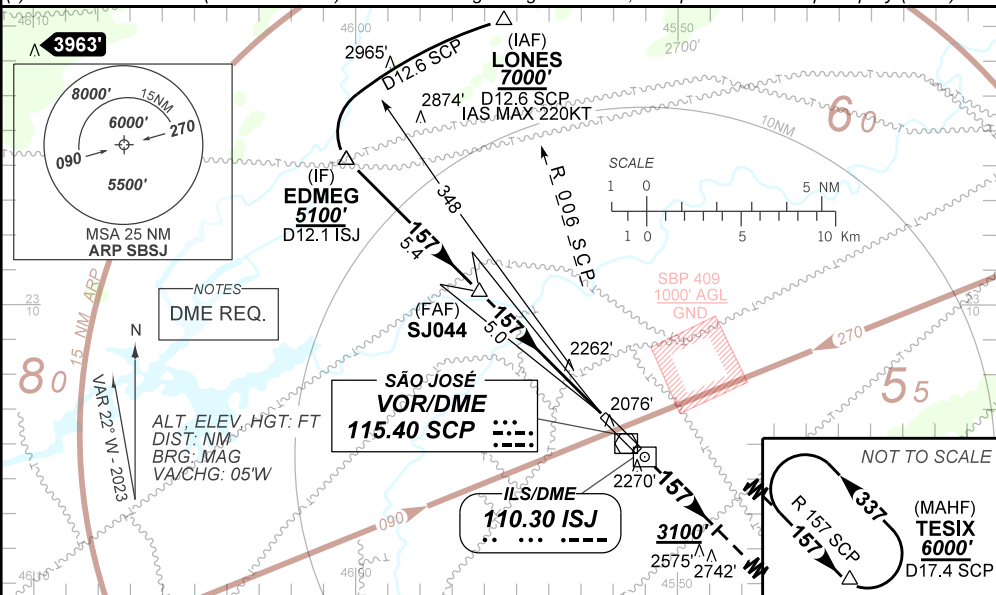
Missed APCH: Climb to **6000'** on heading **157'**, MNM gradient 4%. After **3100'**, intercept **157'** RDL SCP VOR until TESIX for holding.

RMK: 1) Pouso RWY 34: circular somente pelo setor SW do Aeródromo / Arrival RWY 34: circle SW sector only.

2)(\*)VIS RVR ALS 550m (600m - CAT E) para APCH utilizando Diretor de Voo, Piloto Automático ou Head-Up Display (HUD) /

(\*)VIS RVR ALS 550m(600m - CAT E) for APCH using a Flight Director, Autopilot or Head-Up Display (HUD).

DEPARTAMENTO DE CONTROLE DO ESPAÇO AÉREO



TO THR 16 (NM)	10.4	5.0	1.5	0.0
TO ISJ (DME)	12.1	6.7	3.2	1.7

	SJ044	4.0	3.0	2.0	1.5	RWY16	Ground Speed (KT)	090	110	130	150	170	190
	3680	3361	3042	2724	2560	ALT	FPM	500	600	700	800	900	1000
	1694	1329	1010	692	530	(HGT)	FAF-MAPT	NA					

STRAIGHT-IN	CAT	A	B	C	D	E
	DA / (OCH)	2232' / (200')				2295' / (263')
CAT I	ALS/NO ALS/ RVR ALS (m)	800 / 1200 / 700*				800 / 1300 / 700*
	MDA / (OCH)	2560' / (530')				
LOC	ALS/NO ALS/ RVR ALS (m)	800 / 1600 / NIL		1700 / 2400 / NIL		
	MDA / (OCH)	2650' / 530'		3150' / 1030'	3390' / 1270'	3580' / 1460'
CIRCLING	VIS (m)	1600		4800	4800	4800

CHANGES: LAYOUT, RMK.