

**INSTRUMENT APPROACH  
CHART (IAC)**

**PALMAS / Brigadeiro Lysias Rodrigues (SBPJ)**

**VOR Y RWY 32**

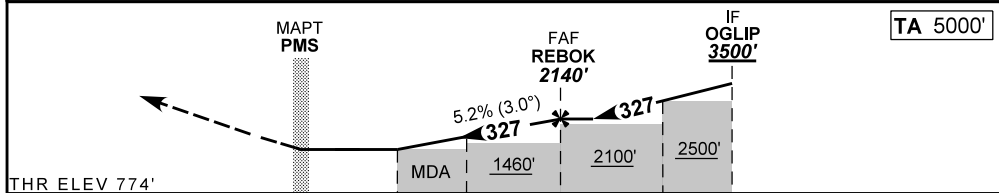
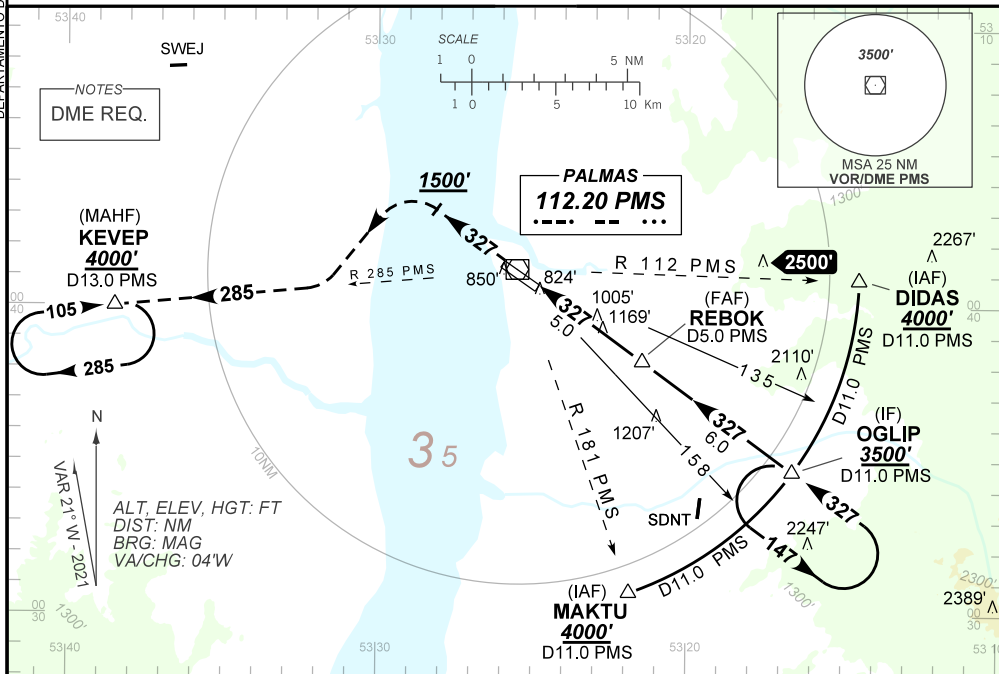
**AD ELEV: 774'**

ATIS NIL	APP PALMAS 119.00	AFIS PALMAS 119.00	TWR PALMAS 118.00	GNDC NIL
VOR PMS 112.20 MHz	FINAL CRS 327°	FAF: 2140'	VOR MDA / (OCH): 1260' / (490')	

APCH Perdida: Subir para **4000'**. Manter a RDL **327'** do VOR PMS até **1500'**. Após, curvar à ESQUERDA para interceptar a RDL **285'** do VOR PMS até KEVEP para espera.

Missed APCH: Climb to **4000'**. Maintain **327'** RDL PMS VOR until **1500'**. After, turn LEFT to intercept **285'** RDL PMS VOR until KEVEP for holding.

DEPARTAMENTO DE CONTROLE DO ESPAÇO AÉREO



THR ELEV 774'	0.0	1.4	2.0	4.1	7.2	10.1	TO RWY 32 (NM)
	0.9	2.3	2.9	5.0	8.1	11.0	TO PMS (DME)

RWY 32	1.4	2.0	3.0	4.0	REBOK	Ground Speed (KT)	090	110	130	150	170	190
ALT	1260	1461	1779	2098	2140	FPM	500	600	700	800	900	1000
(HGT)	490	687	1005	1324	1370	FAF-MAPT	NA					

STRAIGHT-IN	CAT	A	B	C	D	E
	MDA / (OCH)	1260' / (490')				
VOR	ALS/NO ALS/ RVR ALS (m)	NIL / 1600 / NIL		NIL / 2300 / NIL		
CIRCLING	MDA / (OCH)	NA				
	VIS (m)					

CHANGES: FREQ. LAYOUT.