

**INSTRUMENT APPROACH  
CHART (IAC)**

**CURITIBA / Afonso Pena, INTL (SBCT)**

**ILS X CAT I & II RWY 15**

**AD ELEV: 2989'**

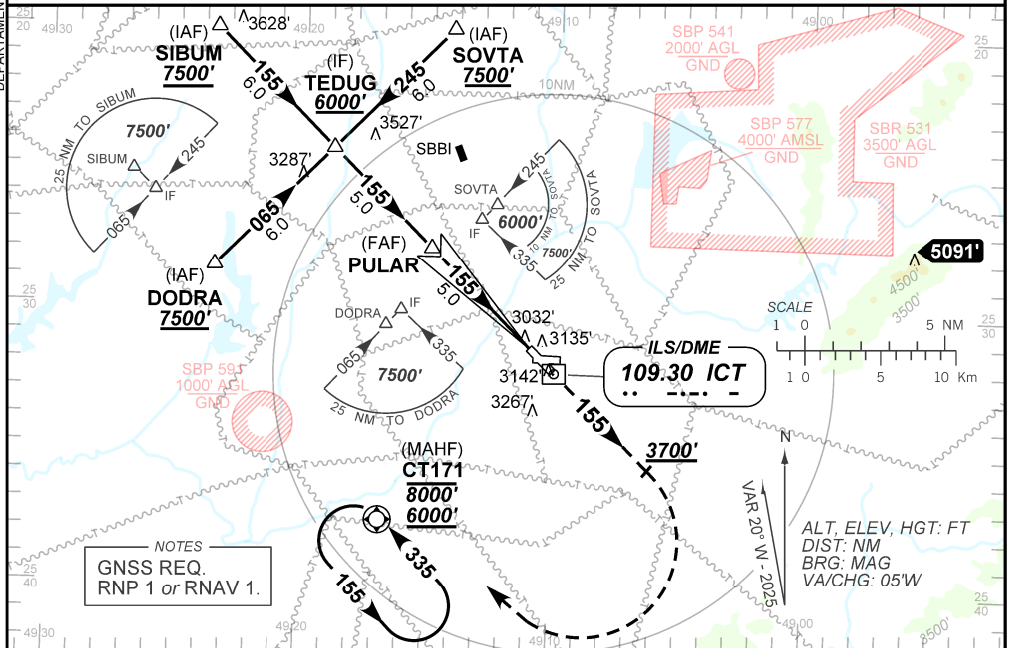
D-ATIS <b>127.80</b>	APP CURITIBA <b>119.70 119.95 120.65 120.95 129.55 133.15</b>			TWR CURITIBA <b>118.15</b>	GND C CURITIBA <b>121.90</b>
ILS/DME ICT <b>109.30 MHz</b>	FINAL CRS <b>155°</b>	FAF: <b>4620'</b>	CAT I & CAT II DA / (OCH): <b>REFER TO MNM</b>		<b>N/A</b>

APCH Perdida: Subir para **6000'** na proa **155°** até **3700'**. Após, curva à DIREITA direto CT171 para espera.

Missed APCH: Climb to **6000'** on heading **155°** until **3700'**. After, turn RIGHT direct CT171 for holding.

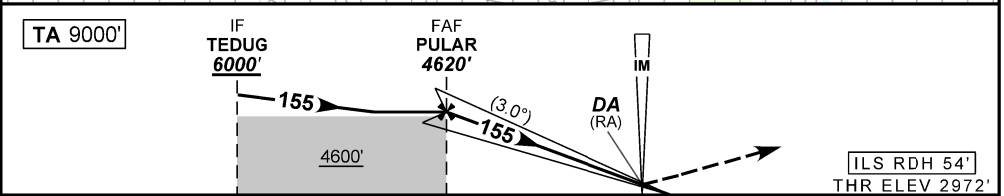
RMK: (\*)VIS RVR ALS 550m para APCH utilizando Diretor de Voo, Piloto Automático ou Head-Up Display (HUD).  
(\*)VIS RVR ALS 550m for APCH using a Flight Director, Autopilot or Head-Up Display (HUD).

DEPARTAMENTO DE CONTROLE DO ESPAÇO AÉREO



NOTES  
GNSS REQ.  
RNP 1 or RNAV 1.

SCALE  
1 0 5 10 Km  
1 0 5 10 NM  
ALT, ELEV, HGT: FT  
DIST: NM  
BRG: MAG  
VA/CHG: 05°W



TO THR 15 (NM)	10.0	5.0	0.2	0.0
TO ICT (DME)	10.2	5.2	0.4	0.2

NIL	RWY 15	Ground Speed (KT)	090	110	130	150	170	190
NIL	ALT	FPM	NIL					
NIL	(HGT)	FAF-MAPT	NIL					

STRAIGHT-IN	CAT	A	B	C	D	E
CAT II	DA / (OCH) / RA		3072' / (100') / 100'			NA
	ALS/NO ALS/ RVR ALS (m)		NIL / NIL / 350			
CAT I	DA / (OCH)		3172' / (200')			NA
	ALS/NO ALS/ RVR ALS (m)		800 / 1200 / 700(*)			

CHANGES: NIL