

**INSTRUMENT APPROACH
CHART (IAC)**

DIVINÓPOLIS / Brigadeiro Antônio Cabral (SNDV)

RNP RWY 17

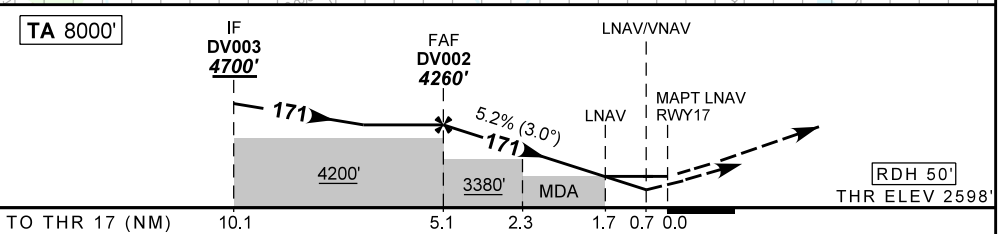
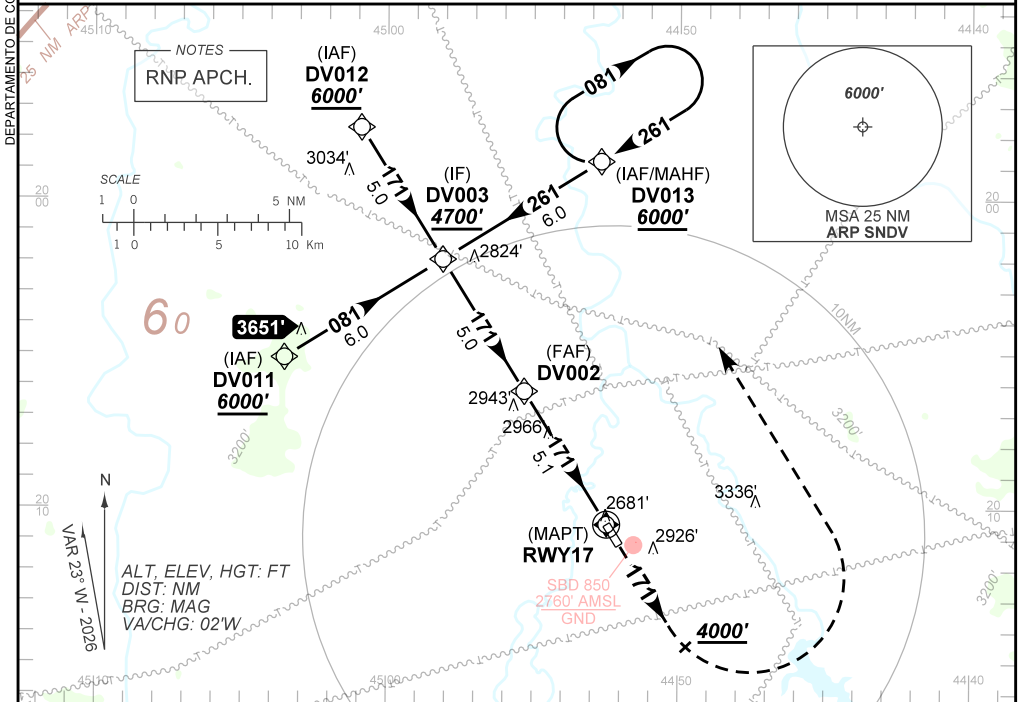
(CAT A, B, C)

AD ELEV: 2637'

ATIS NIL	ERAA 132.35	APP NIL	TWR NIL	GNDC NIL
TEMP LNAV/VNAV MIN 0°C / MAX 50°C	FINAL CRS 171°	FAF: 4260'	LNAV/VNAV DA / (OCH): 2908' / (310')	LNAV MDA / (OCH): 3190' / (600')

APCH Perdida: Subir para **6000'**. Manter rumo **171** até **4000'**. Após, curvar a ESQUERDA direto DV013 para espera.

Missed APCH: Climb to **6000'**. Maintain course **171** until **4000'**. After, turn LEFT direct DV013 for holding.



TO THR 17 (NM)	10.1	5.1	2.3	1.7	0.7	0.0	THR ELEV 2598'
DV002	4.0	3.0	2.3	1.7	RWY 17		
4260	3922	3603	3380	3190	ALT		
1662	1324	1005	782	600	(HGT)		
Ground Speed (KT)	090	110	130	150	170	190	
FPM	500	600	700	800	NA		
FAF-MAPT	NIL						

STRAIGHT-IN	CAT	A	B	C	D	E
	DA / (OCH)	2908' / (310')			NA	
LNAV/VNAV	ALS/NO ALS/ RVR ALS (m)	NIL / 1400 / NIL			NA	
	MDA / (OCH)	3190' / (600')			NA	
LNAV	ALS/NO ALS/ RVR ALS (m)	NIL / 1600 / NIL		NIL / 2700 / NIL		
	MDA / (OCH)	NA				
CIRCLING	MDA / (OCH)	NA				
	VIS (m)	NA				

CHANGES: PROC. VAR.

AIRAC AMDT 2604A1 16 APR 26

SNDV_IAC_00C 1/1
IAC RNP RWY 17