

**INSTRUMENT APPROACH
CHART (IAC)**

BRASÍLIA / Pres. Juscelino Kubitschek, INTL (SBBR)

AD ELEV: 3498'

ILS X or LOC X RWY 29L

D-ATIS 127.80	APP BRASÍLIA 119.70 129.60 119.20 120.00	TWR BRASÍLIA 118.10 118.45 118.75	GNDC BRASÍLIA 121.80 121.95
-------------------------	--	---	---------------------------------------

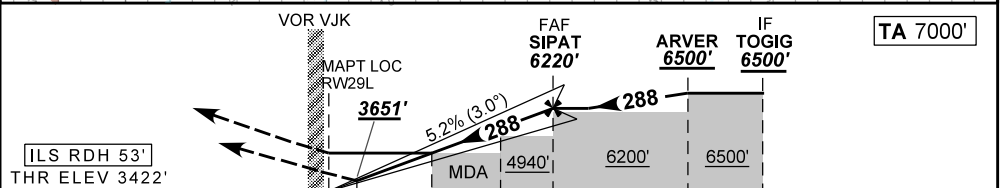
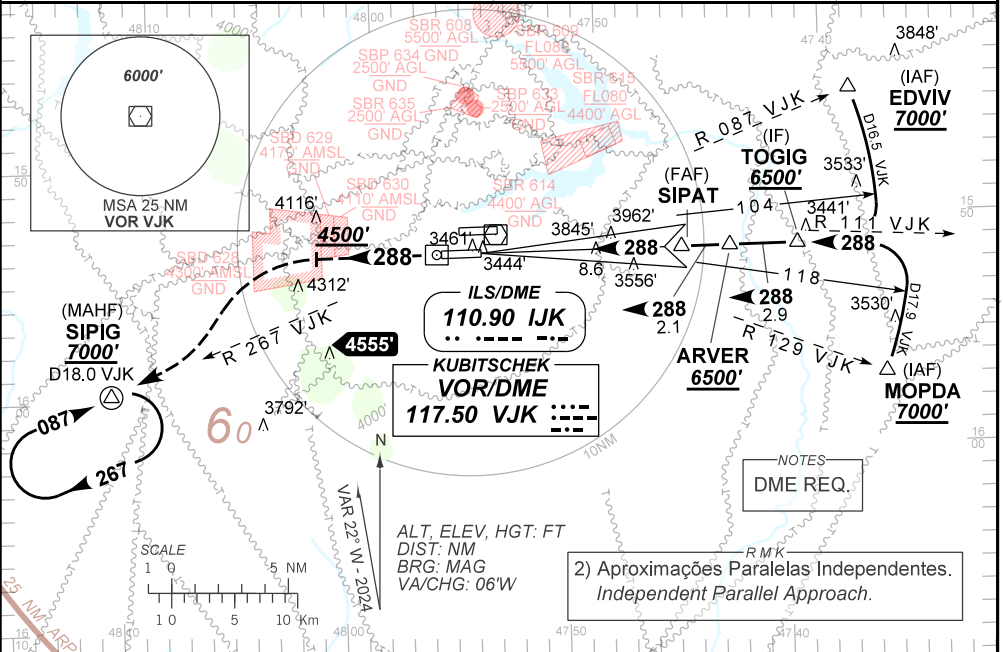
ILS/DME IJK 110.90 MHz	FINAL CRS 288°	FAF: 6220'	CAT I DA / (OCH): 3651' / (229')	LOC MDA / (OCH): 3990' / (570')
----------------------------------	--------------------------	----------------------	---	--

APCH Perdida: Subir para **7000'**. Manter proa **288** até **4500'**. Após, curvar à ESQUERDA RDL **267** do VOR VJK até SIPIG para espera.

Missed APCH: Climb to **7000'**. Maintain heading **288** until **4500'**. After, turn LEFT **267** RDL VJK VOR direct SIPIG for holding.

RMK: 1) (*)VIS RVR ALS 550m para APCH utilizando Diretor de Voo, Piloto Automático ou Head-Up Display(HUD).
(*) VIS RVR ALS 550m for approach using a Flight Director, Autopilot or Head-Up Display (HUD).

DEPARTAMENTO DE CONTROLE DO ESPAÇO AÉREO



0.0	0.6	1.6	4.6	8.6	10.7	13.6	TO THR 29L (NM)
1.9	2.5	3.5	6.5	10.5	12.6	15.5	TO IJK (DME)

RWY29L	1.6	2.0	3.0	4.0	5.0	SIPAT	Ground Speed (KT)	090	110	130	150	170	190
ALT	3990	4112	4430	4749	5067	6220	FPM	500	600	700	800	900	1000
(HGT)	570	690	1008	1327	1645	2798	FAF-MAPT	NA					

STRAIGHT-IN	CAT I	CAT	A	B	C	D	E
		DA / (OCH)	3651' / (229')				
LOC		MDA / (OCH)	3990' / (570')				
		ALS/NO ALS/ RVR ALS (m)	800 / 1200 / 700 (*)				
CIRCLING		MDA / (OCH)	800 / 1600 / 700				
		VIS (m)	1900 / 2600 / NIL				
		MDA / (OCH)	NA				

CHANGES: ALT, HGT, WPT.