

**INSTRUMENT APPROACH
CHART (IAC)**

NATAL / Augusto Severo, MIL (SBNT)

AD ELEV: 171'

**USO EXCLUSIVO ACFT MILITARES
MILITARY ACFT ONLY**

VOR X RWY 12

D-ATIS 132.65	APP NATAL 119.30 119.65 120.65 129.80			TWR NATAL 118.70 122.80	GNDC NATAL 121.90
-------------------------	---	--	--	-----------------------------------	-----------------------------

VOR NTL 114.30 MHz	FINAL CRS 115°	FAF: 2000'	N/A	VOR MDA / (OCH): 540' / (380')
------------------------------	--------------------------	----------------------	-----	--

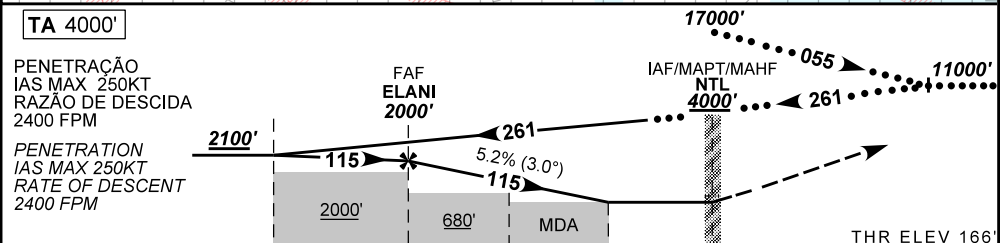
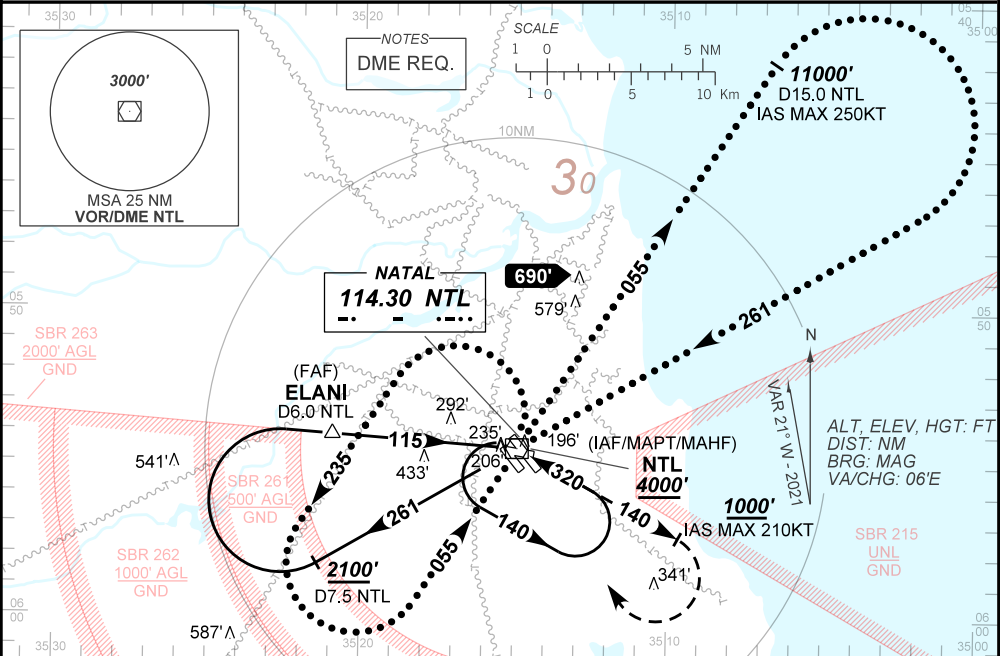
APCH Perdida: 1) Subir para **4000'**. Manter a RDL **140** do VOR NTL até **1000'**. Após, curvar à DIREITA direto VOR NTL para espera. 2) IAS MAX 210KT até cruzar 1000'.

Missed APCH: 1) Climb to **4000'**. Maintain **140** RDL NTL VOR until **1000'**. After, turn RIGHT direct to NTL VOR for holding. 2) IAS MAX 210KT until 1000'.

RMK: Para circular / Circling: IAS MAX 170KT.

DEPARTAMENTO DE CONTROLE DO ESPAÇO AÉREO

CHANGES: ADEL, D-ATIS, EAC, FREQ, IDENT, LAYOUT, MMM, PROC, TA, THR, ELEV, VAR.



TO THR 12(NM)	7.5	5.6	2.0	1.0	0.0	THR ELEV 166'
TO NTL (DME)	7.9	6.0	2.4	1.4	0.4	

	ELANI	4.0	3.0	2.0	1.0	RWY12	Ground Speed (KT)	090	110	130	150	170	190
	2000	1493	1174	856	540	ALT		FPM	500	600	700	800	900
	1861	1324	1005	687	380	(HGT)	FAF-MAPT	NA					

STRAIGHT-IN	CAT	A	B	C	D	E
	MDA / (OCH)	540' / (380')				
VOR	ALS/NO ALS/ RVR ALS (m)	NIL / 1600 / NIL			NIL / 1700 / NIL	
	MDA / (OCH)	650' / (490')	800' / (640')	890' / (730')	1000' / (840')	
CIRCLING	VIS (m)	1600	1600	3200	3600	4800

AIRAC AMDT 2107A1 15 JUL 21

USO EXCLUSIVO ACFT MILITARES / MILITARY ACFT ONLY

**SBNT_IAC_01U 1/1
IAC VOR X RWY 12**