

STANDARD DEPARTURE CHART
INSTRUMENT (SID)

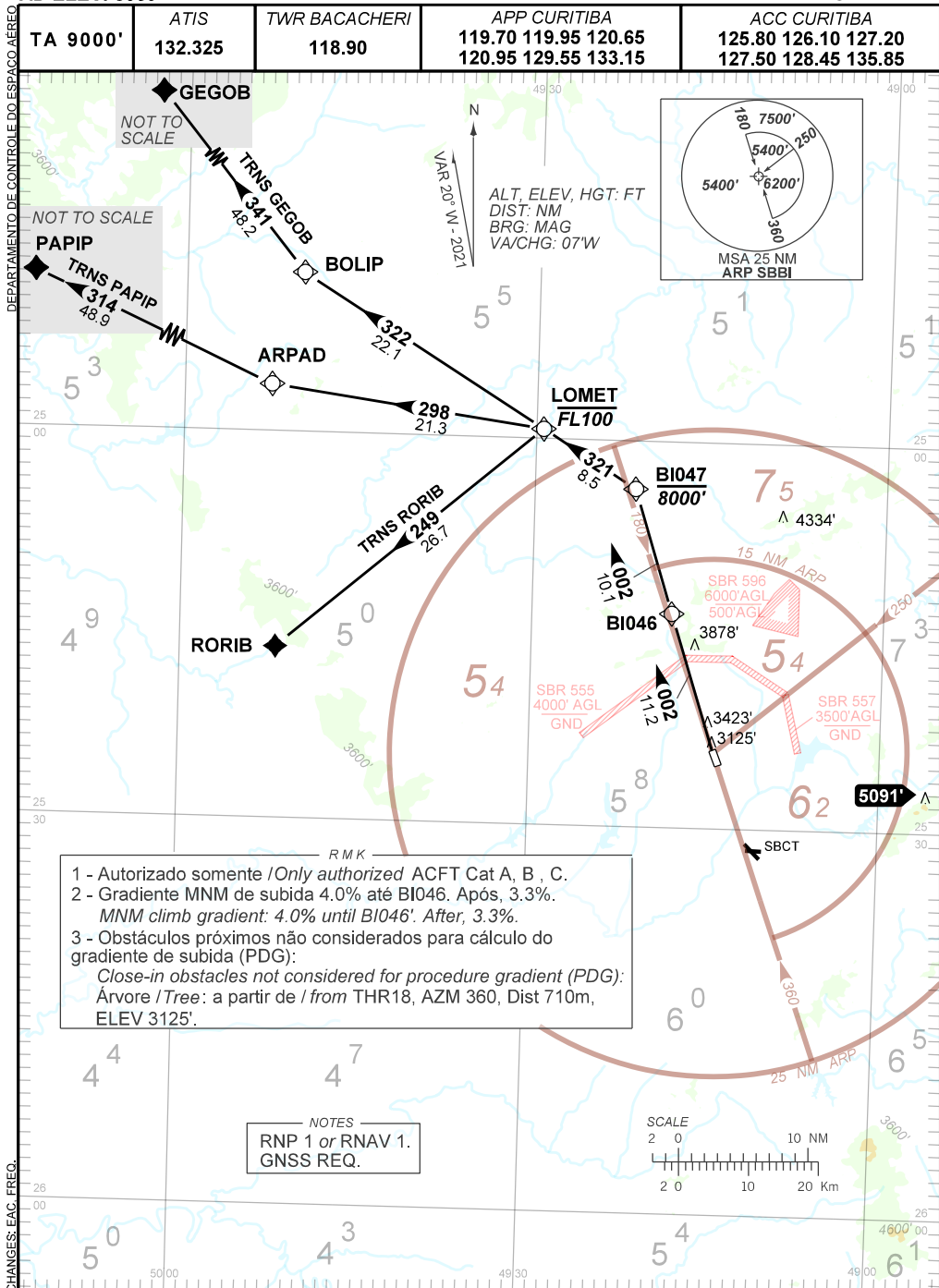
CURITIBA / Baccheri (SBBJ)

RWY 36

RNAV LOMET 1D

AD ELEV: 3059'

TA 9000'	ATIS 132.325	TWR BACACHERI 118.90	APP CURITIBA 119.70 119.95 120.65 120.95 129.55 133.15	ACC CURITIBA 125.80 126.10 127.20 127.50 128.45 135.85
----------	--------------	----------------------	--	--



- RMK
- 1 - Autorizado somente / Only authorized ACFT Cat A, B, C.
 - 2 - Gradiente MNM de subida 4.0% até BI046. Após, 3.3%.
MNM climb gradient: 4.0% until BI046'. After, 3.3%.
 - 3 - Obstáculos próximos não considerados para cálculo do gradiente de subida (PDG):
Close-in obstacles not considered for procedure gradient (PDG):
Árvore / Tree: a partir de / from THR18, AZM 360, Dist 710m, ELEV 3125'.

NOTES
RNP 1 or RNAV 1.
GNSS REQ.