

**INSTRUMENT APPROACH
CHART (IAC)**

TIRIÓS / Óbidos, MIL (SBTS)

AD ELEV: 1129'

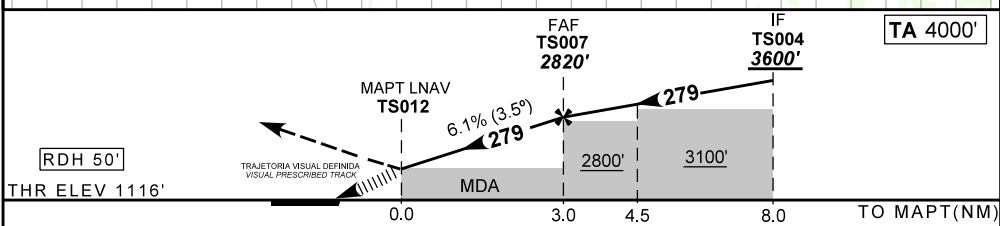
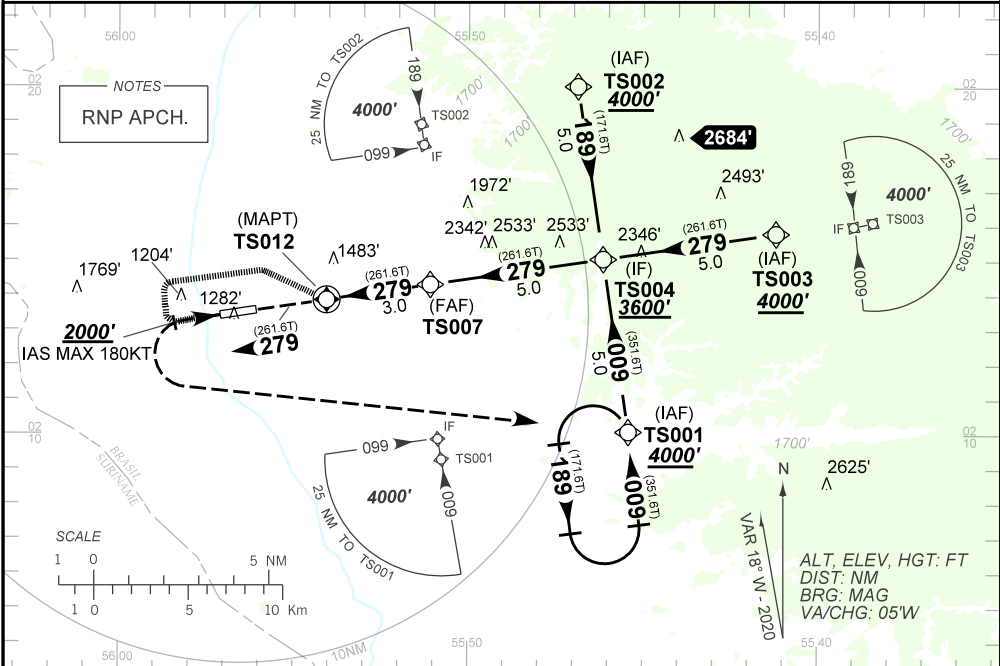
RNAV(GNSS) A RWY 10

ATIS NIL	APP NIL	AFIS TIRIÓS 128.10	GNDC NIL
N/A	FINAL CRS 279°	FAF: 2820'	N/A

APCH Perdida: Subir para **4000'**. Manter rumo **279°** até passar **2000'**, após curvar à **ESQUERDA** direto para TS001 para espera.

Missed APCH: Climb to **4000'**. Maintain course **279°** until passing **2000'**. After, turn **LEFT** direct to TS001 for holding.

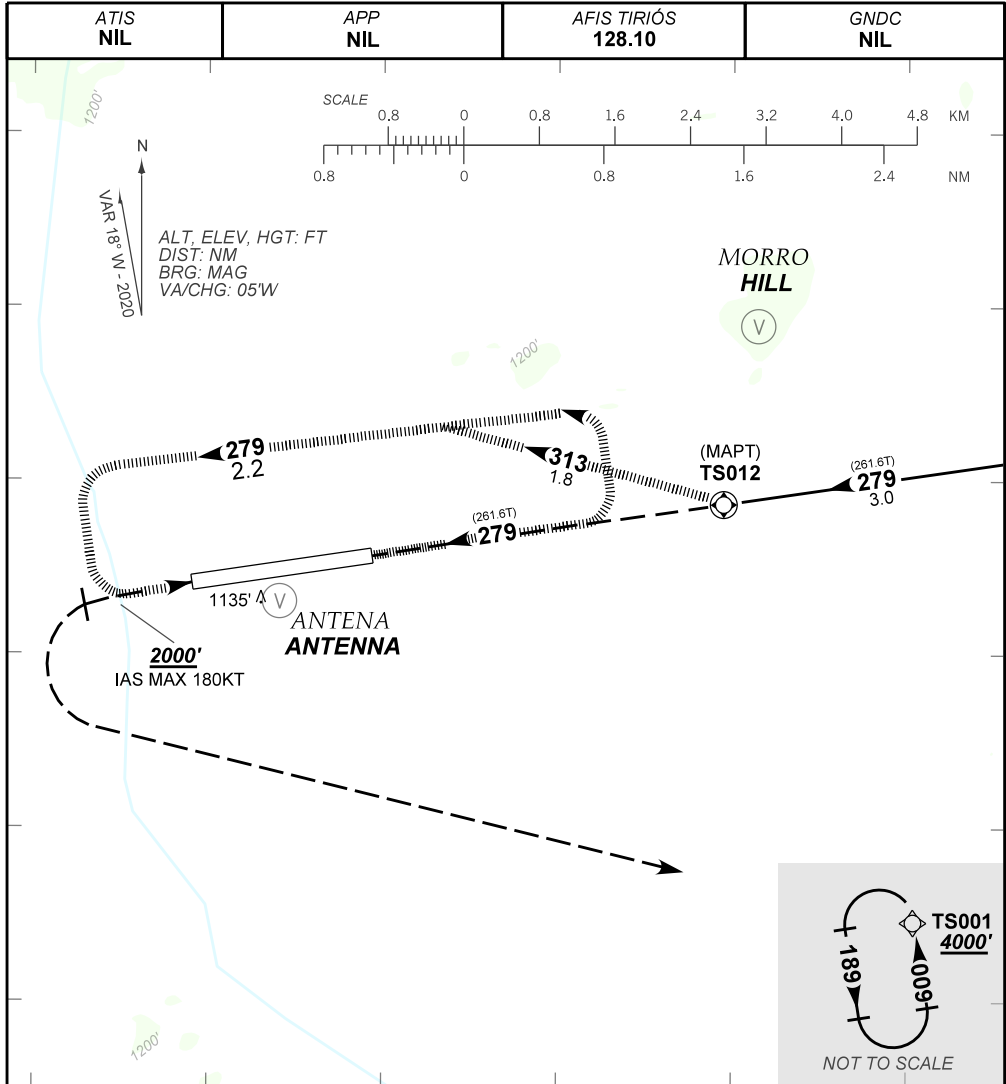
RMK: NIL.



MAPT	TS012	1,0	2,0	TS007	KT	090	110	130	150	170	190
ALT	1710	2082	2453	2820	FPM	500	600	700	800	NA	
(HGT)	590	953	1324	1691	FAF-MAPT	NA					

STRAIGHT-IN	CAT	A	B	C	D	E
	MDA / (OCH)	NA				
LNAV	ALS/SNO ALS/ RVR ALS (m)	NA				
	MDA / (OCH)	1710' / (590')				NA
CIRCLING	MDA / (OCH)	1900	2800	3700	NA	
	VIS (m)					NA

CHANGES: DIST, OBST, PROFILE, VPA.



CHANGES: DIST, OBST, PROFILE, VPA.

- 1) O piloto deverá estar em contato visual e prover sua própria separação com as referências visuais:
The pilot should have visual contact and provide his own separation with the visual references:
Morro/Hill (N02 14.89 W055 53.86) e/and Antena/Antenna (N02 13.30 W055 56.59).
- 2) Em caso de aproximação perdida, durante a manobra para circular: Curvar à esquerda para realização de nova passagem e subir para 1800'.
In case of missed approach, during the circling: turn left to perform a new approach and climb to 1800'.