

INSTRUMENT APPROACH
CHART (IAC)

PORTO ALEGRE / Canoas, MIL (SBCO)

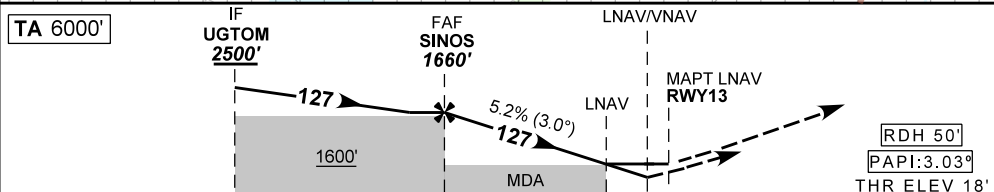
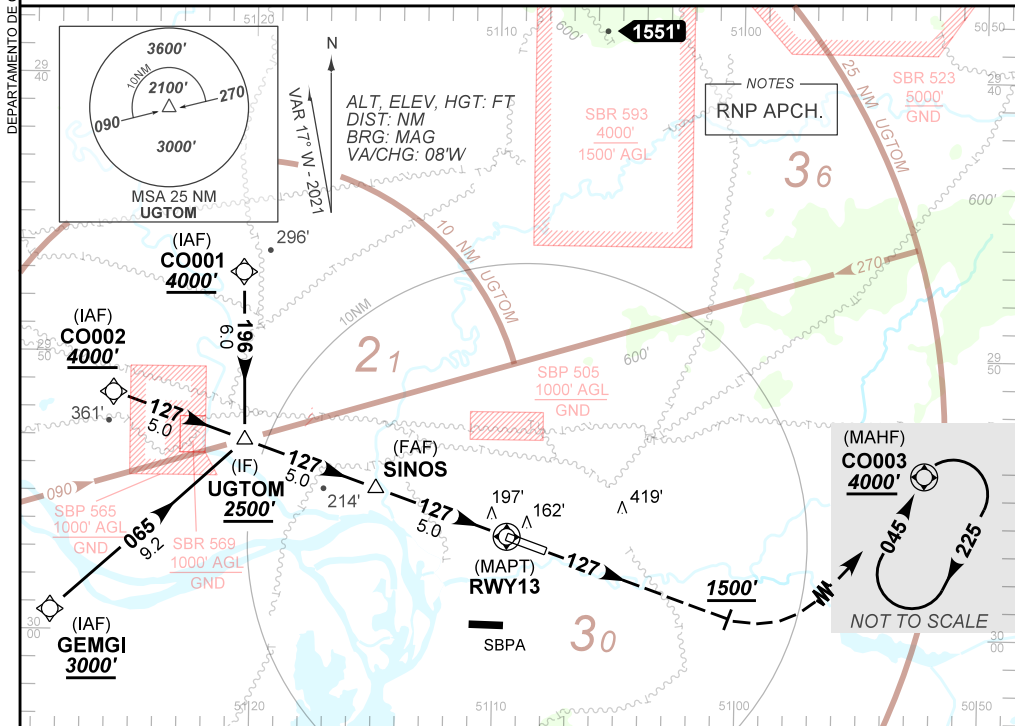
AD ELEV: 26'

RNP Z RWY 13

ATIS NIL	APP PALEGRE 119.00 120.10 120.55 128.90	TWR CANOAS 118.50 122.80 (MIL)	GNDC CANOAS 121.70
TEMP LNAV/VNAV MIN -10°C / MAX 50° C	FINAL CRS 127°	FAF 1660'	LNAV/VNAV DA / (OCH): 357' / (340')
		LNAV MDA / (OCH): 450' / (430')	

APCH Perdida: Subir para **4000'**. Manter rumo **127°** até cruzar **1500'**. Então, curvar à ESQUERDA direto CO003 para espera.
Missed APCH: Climb to **4000'**. Maintain course **127°** until passing **1500'**. Then, turn LEFT direct CO003 for holding.

RMK: NIL



TO THR 13 (NM)	10.0	5.0	1.2	0.9	0.0
----------------	------	-----	-----	-----	-----

SINOS	4.0	3.0	2.0	1.2	0.9	RWY13	Ground Speed (KT)	090	110	130	150	170	190
1660	1342	1023	705	450	357	ALT	FPM	500	600	700	800	900	1000
1642	1324	1005	687	430	340	(HGT)	FAF-MAPT	NA					

STRAIGHT-IN	CAT	A	B	C	D	E
	DA / (OCH)	357' / (340')				NA
LNAV/VNAV	MALS/NO MALS/RVR ALS (m)	800 / 1500 / NIL				NA
	MDA / (OCH)	450' / (430')				NA
LNAV	MALS/NO MALS/RVR ALS (m)	800 / 1600 / NIL		1300 / 2000 / NIL		
	MDA / (OCH)	NA				
CIRCLING	MDA / (OCH)	NA				
	VIS (m)	NA				

AIRAC AMDT 2105A3 20 MAY 21

SBCO IAC 01B 1/1
IAC RNP Z RWY 13

DEPARTAMENTO DE CONTROLE DO ESPAÇO AEREO