

**INSTRUMENT APPROACH
CHART (IAC)**

PORTO ALEGRE / Salgado Filho, INTL (SBPA)

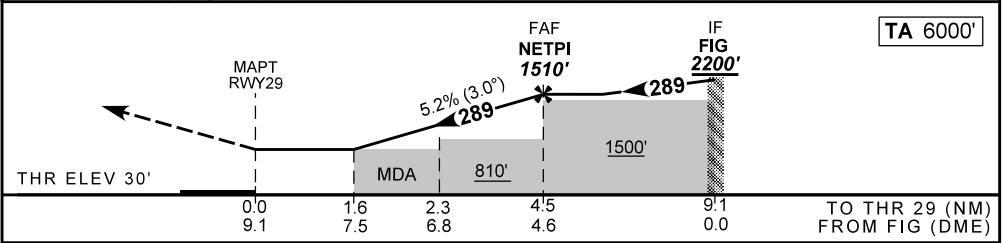
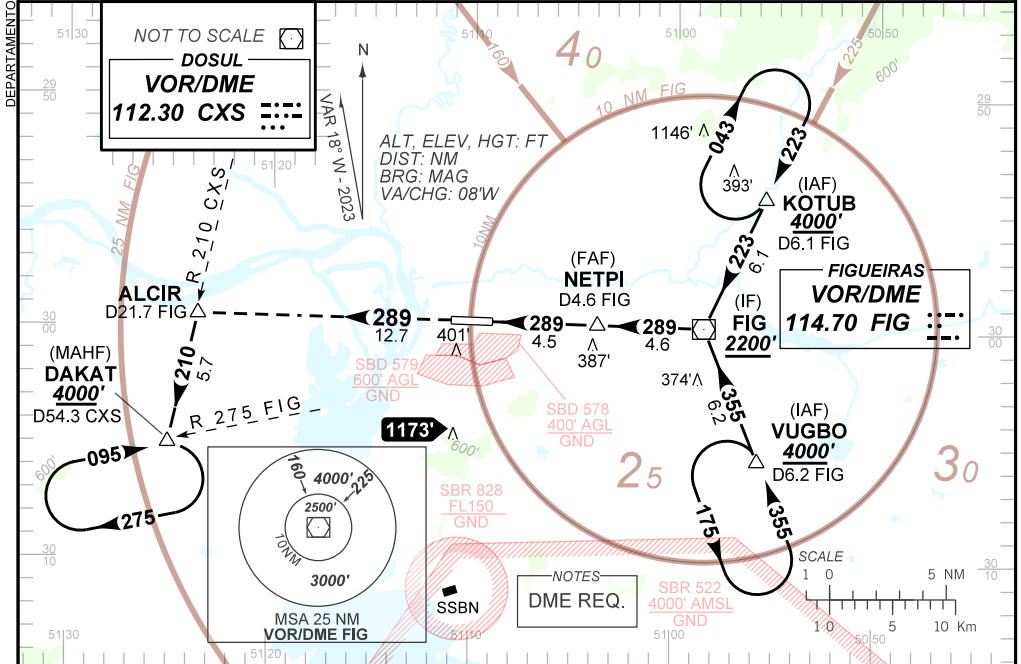
AD ELEV: 30'

VOR Y RWY 29

D-ATIS 132.35	APP PALEGRE 119.00 120.10 120.55 128.90			TWR PALEGRE 118.10	GNDC PALEGRE 121.90
VOR/DME FIG 114.70 MHz	FINAL CRS 289°	FAF: 1510'	N/A	VOR MDA / (OCH): 600' (570')	

APCH Perdida: Subir para **4000'**. Manter RDL **289** VOR FIG até ALCIR. Após, curvar à ESQUERDA RDL **210** VOR CXS para espera em DAKAT.

Missed APCH: Climb to **4000'**. Maintain **289** RDL FIG VOR until ALCIR. After, turn LEFT **210** RDL CXS VOR for holding at DAKAT.



RWY29	1.6	2.3	3.0	4.0	NETPI	Ground Speed (KT)	090	110	130	150	170	190
ALT	600	812	1035	1354	1510	FPM	500	600	700	800	900	1000
(HGT)	570	782	1005	1324	1480	FAF-MAPT	NA					

STRAIGHT-IN	CAT	A	B	C	D	E
VOR	MDA / (OCH)	600' / (570')				
	ALS/NO ALS/ RVR (m)	NIL / 1600 / 1550		NIL / 2600 / NIL		
CIRCLING	MDA / (OCH)	NA				
	VIS (m)	NA				

CHANGES: EAC. LAYOUT.